



- Spray mode
- Automatic diverter
- Total height 26-1/8"
- Flange diameter 2-1/8"
- Profi spray hole diameter 1-1/8"
- Sprayface with descaling system
- Profispray arm can be pivoted or locked into place
- lead-free





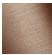


Can only be combined with 32815682, 33826861, 32815861, 33836888, 32816888, 20816892, 33836875, 32815875.

Internal backflow preventer.

Flexible positioning of components.

Button has to be pressed while using.

Profi spray set can be installed with or without flange

	Chrome	27 799 970-00
	Brushed Platinum	27 799 970-06
	Platinum	27 799 970-08
	Dark Chrome	27 799 970-19
	Brushed Bronze	27 799 970-42
	Brushed Chrome	27 799 970-93
	Brushed Dark Platinum	27 799 970-99

27 799 970 Product version from 10/1/2024

mm [inches]  
1:10



### Flow rate chart



### Codes & Standards

DIN 4109

EN 1717

ISO 3822

NSF372

NSF61

Ü-Zeichen



Profi side spray set - Chrome

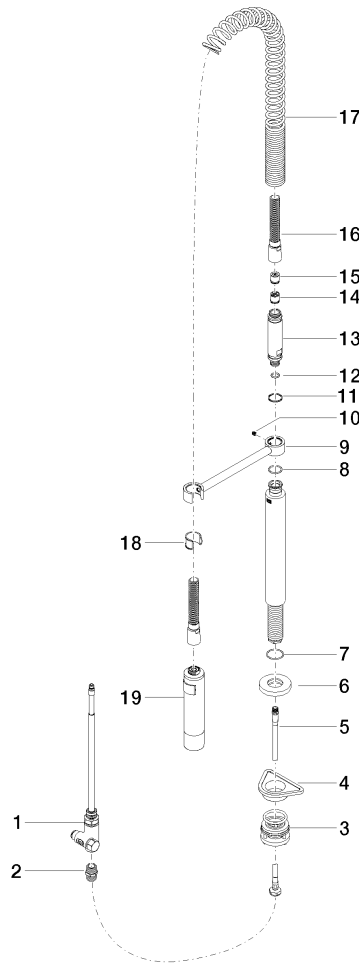
SERIES-VARIOUS

27 799 970    Product version from 10/1/2024

Certificates and sustainability

IAPMO\_6397            LGA\_38            Belgaqua\_24-005-2    IAPMO\_N-4976

Parts for other  
finishes can be found  
here: Brushed  
Platinum



### Spare parts list

Number	Item Number	Designation	Number of units	Lead time
9	04 17 20 014 00-00	holder	1.00	10
7	09 14 10 120 90	seal	1.00	2
12	09 14 10 003 90	seal	1.00	2
2	90 24 03 250 00 90	nipple	1.00	2
13	09 30 01 067 10-00	adaptor	1.00	10
17	09 16 02 034 90	spring	1.00	2
1	90 17 09 046 12 90	diverter	1.00	2
6	90 27 86 000 00-00	rosette	1.00	10
3	04 23 10 004 03 90	fixing set	1.00	2
19	04 12 11 094 10-00	shower	1.00	10
15	09 23 01 046 90	back-flow preventer	1.00	2
4	09 18 40 090 90	sleeve	1.00	2
11	09 14 15 012 90	ring	1.00	2
10	09 31 11 049 90	pin	1.00	2
5	04 30 04 104 00 90	hose	1.00	2
8	09 14 10 031 90	seal	1.00	2
16	90 30 02 065 00-00	hose	1.00	10
18	90 18 40 035 00 90	sleeve	1.00	2
14	90 23 01 141 00 90	back-flow preventer	1.00	2