



## Profi side spray set - Brushed Platinum

27 799 970    Product version from 10/1/2024



- Spray mode
- Automatic diverter
- Total height 26-1/8"
- Flange diameter 2-1/8"
- Profi spray hole diameter 1-1/8"
- Sprayface with descaling system
- Profispray arm can be pivoted or locked into place
- lead-free








Can only be combined with 32815682, 33826861, 32815861, 33836888, 32816888, 20816892, 33836875, 32815875.

Internal backflow preventer.

Flexible positioning of components.

Button has to be pressed while using.

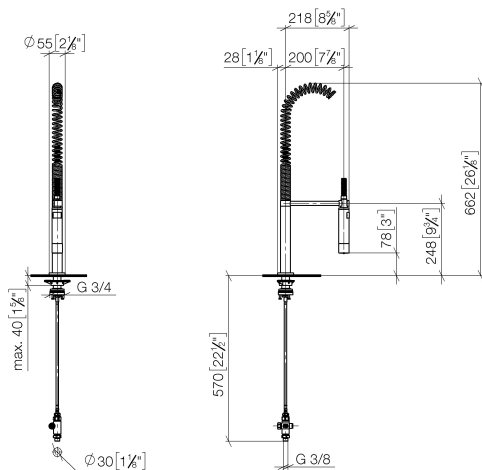
Profi spray set can be installed with or without flange

|   |                       |               |
|---|-----------------------|---------------|
|  | Brushed Platinum      | 27 799 970-06 |
|  | Chrome                | 27 799 970-00 |
|  | Platinum              | 27 799 970-08 |
|  | Dark Chrome           | 27 799 970-19 |
|  | Brushed Bronze        | 27 799 970-42 |
|  | Brushed Chrome        | 27 799 970-93 |
|  | Brushed Dark Platinum | 27 799 970-99 |

## Profi side spray set - Brushed Platinum

27 799 970 Product version from 10/1/2024

mm [inches]  
1:10



### Flow rate chart



### Codes & Standards

DIN 4109

EN 1717

ISO 3822

NSF372

NSF61

Ü-Zeichen



# Profi side spray set - Brushed Platinum

---

27 799 970    Product version from 10/1/2024

## Certificates

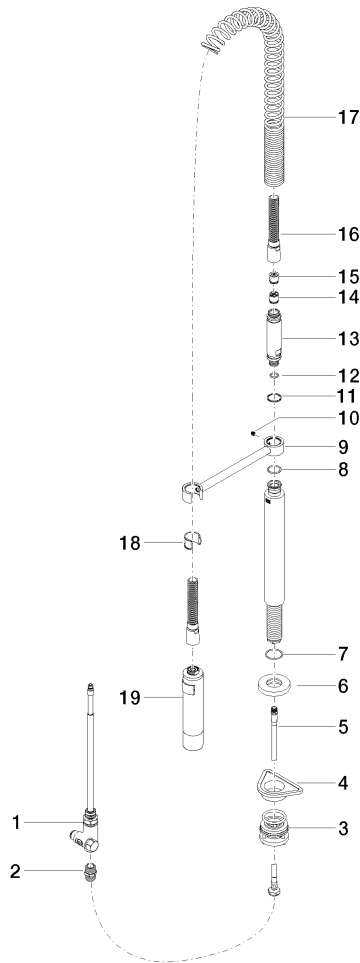
---

IAPMO\_6397            LGA\_38            Belgaqua\_24-005-2    IAPMO\_N-4976

# Profi side spray set - Brushed Platinum

27 799 970    Product version from 10/1/2024

Parts for other finishes can be found here: [Chrome](#)



## Spare parts list

| Number | Item Number        | Designation         | Number of units | Lead time |
|--------|--------------------|---------------------|-----------------|-----------|
| 1      | 90 17 09 046 12 90 | diverter            | 1               | 2         |
| 2      | 90 24 03 250 00 90 | nipple              | 1               | 2         |
| 3      | 04 23 10 004 03 90 | fixing set          | 1               | 2         |
| 4      | 09 18 40 090 90    | sleeve              | 1               | 2         |
| 5      | 04 30 04 104 00 90 | hose                | 1               | 2         |
| 6      | 90 27 86 000 00-06 | rosette             | 1               | 10        |
| 7      | 09 14 10 120 90    | seal                | 1               | 2         |
| 8      | 09 14 10 031 90    | seal                | 1               | 2         |
| 9      | 04 17 20 014 00-06 | holder              | 1               | 10        |
| 10     | 09 31 11 049 90    | pin                 | 1               | 2         |
| 11     | 09 14 15 012 90    | ring                | 1               | 2         |
| 12     | 09 14 10 003 90    | seal                | 1               | 2         |
| 13     | 09 30 01 067 10-06 | adaptor             | 1               | 10        |
| 14     | 90 23 01 141 00 90 | back-flow preventer | 1               | 2         |
| 15     | 09 23 01 046 90    | back-flow preventer | 1               | 2         |
| 16     | 90 30 02 065 00-06 | hose                | 1               | 10        |
| 17     | 09 16 02 034 90    | spring              | 1               | 2         |
| 18     | 90 18 40 035 00 90 | sleeve              | 1               | 2         |
| 19     | 04 12 11 094 10-06 | shower              | 1               | 10        |