



- Spray mode
- Automatic diverter
- Total height 26-1/8"
- Flange diameter 2-1/8"
- Profi spray hole diameter 1-1/8"
- Sprayface with descaling system
- Profispray arm can be pivoted or locked into place
- lead-free




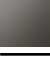



Can only be combined with 32815682, 33826861, 32815861, 33836888, 32816888, 20816892, 33836875, 32815875.

Internal backflow preventer.

Flexible positioning of components.

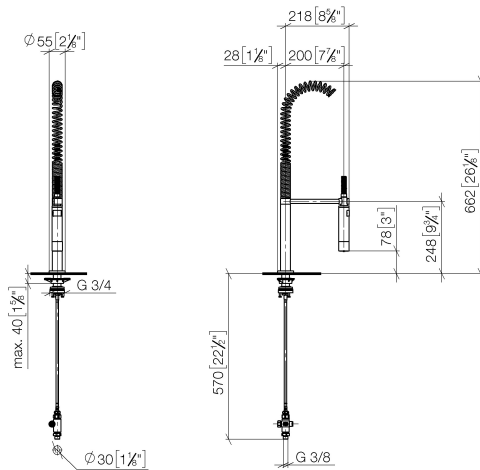
Button has to be pressed while using.

Profi spray set can be installed with or without flange

	Platinum	27 799 970-08
	Chrome	27 799 970-00
	Brushed Platinum	27 799 970-06
	Dark Chrome	27 799 970-19
	Brushed Bronze	27 799 970-42
	Brushed Chrome	27 799 970-93
	Brushed Dark Platinum	27 799 970-99

27 799 970 Product version from 10/1/2024

mm [inches]  
1:10



### Flow rate chart



### Codes & Standards

DIN 4109

EN 1717

ISO 3822

NSF372

NSF61

Ü-Zeichen



Profi side spray set - Platinum

SERIES-VARIOUS

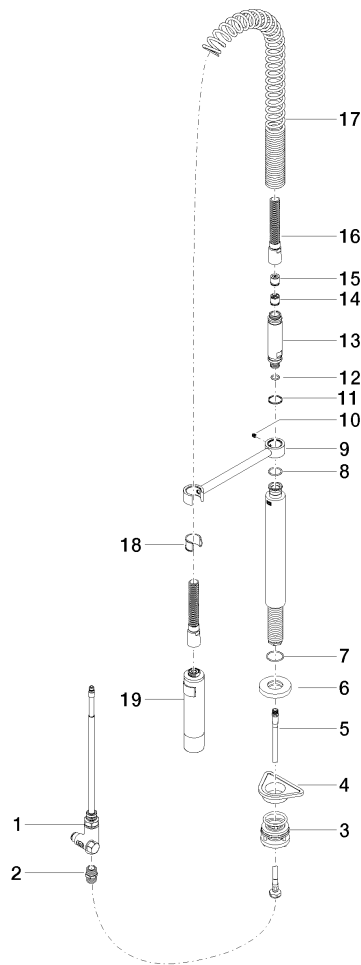
27 799 970 Product version from 10/1/2024

Certificates and sustainability

IAPMO\_6397      LGA\_38      Belgaqua\_24-005-2    IAPMO\_N-4976

27 799 970 Product version from 10/1/2024

Parts for other  
finishes can be found  
here: [Chrome](#)





## Profi side spray set - Platinum

SERIES-VARIOUS

27 799 970 Product version from 10/1/2024

### Spare parts list

Number	Item Number	Designation	Number of units	Lead time
2	90 24 03 250 00 90	nipple	1.00	2
9	04 17 20 014 00-08	holder	1.00	40
5	04 30 04 104 00 90	hose	1.00	2
8	09 14 10 031 90	seal	1.00	2
7	09 14 10 120 90	seal	1.00	2
12	09 14 10 003 90	seal	1.00	2
6	90 27 86 000 00-08	rosette	1.00	-
Spare part can no longer be ordered, please order the replacement item				
13	09 30 01 067 10-08	adaptor	1.00	40
14	90 23 01 141 00 90	back-flow preventer	1.00	2
3	04 23 10 004 03 90	fixing set	1.00	2
18	90 18 40 035 00 90	sleeve	1.00	2
4	09 18 40 090 90	sleeve	1.00	2
10	09 31 11 049 90	pin	1.00	2
11	09 14 15 012 90	ring	1.00	2
15	09 23 01 046 90	back-flow preventer	1.00	2
1	90 17 09 046 12 90	diverter	1.00	2
19	04 12 11 094 10-08	shower	1.00	40
16	90 30 02 065 00-08	hose	1.00	-
Spare part can no longer be ordered, please order the replacement item				
17	09 16 02 034 90	spring	1.00	2