

# Profi side spray set - Dark Chrome

27 799 970    Product version from 10/1/2024



- Spray mode
- Automatic diverter
- Total height 26-1/8"
- Flange diameter 2-1/8"
- Profi spray hole diameter 1-1/8"
- Sprayface with descaling system
- Profispray arm can be pivoted or locked into place
- lead-free








Can only be combined with 32815682, 33826861, 32815861, 33836888, 32816888, 20816892, 33836875, 32815875.

Internal backflow preventer.

Flexible positioning of components.

Button has to be pressed while using.

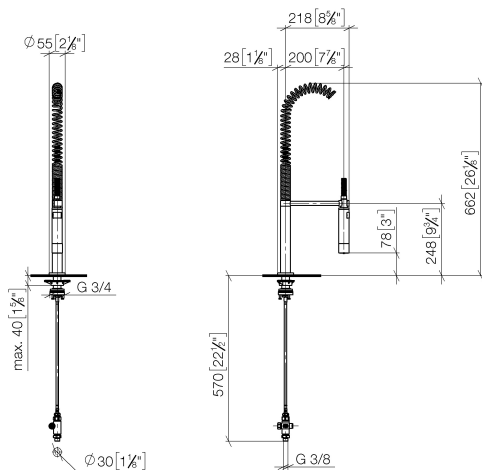
Profi spray set can be installed with or without flange

	Dark Chrome	27 799 970-19
	Chrome	27 799 970-00
	Brushed Platinum	27 799 970-06
	Platinum	27 799 970-08
	Brushed Bronze	27 799 970-42
	Brushed Chrome	27 799 970-93
	Brushed Dark Platinum	27 799 970-99

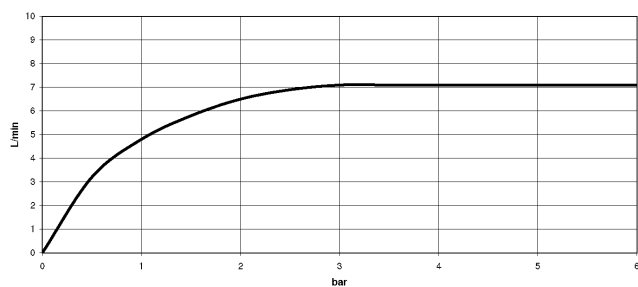
## Profi side spray set - Dark Chrome

27 799 970 Product version from 10/1/2024

mm [inches]  
1:10



### Flow rate chart



### Codes & Standards

DIN 4109

EN 1717

ISO 3822

NSF372

NSF61

Ü-Zeichen



# Profi side spray set - Dark Chrome

---

27 799 970    Product version from 10/1/2024

## Certificates

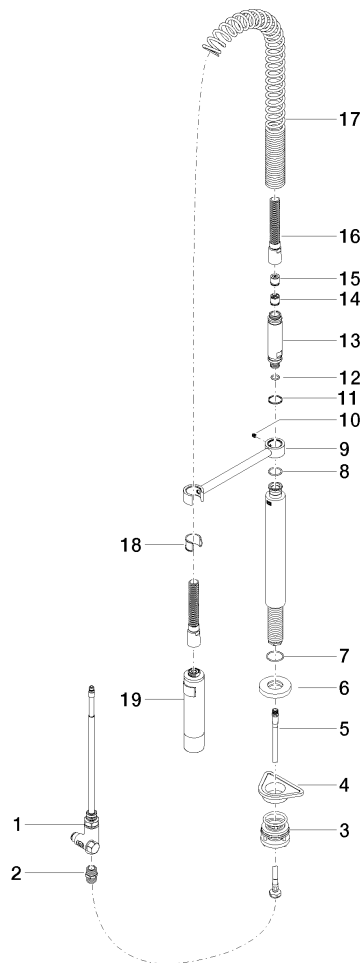
---

IAPMO_6397	LGA_38	Belgaqua_24-005-2	IAPMO_N-4976
------------	--------	-------------------	--------------

## Profi side spray set - Dark Chrome

27 799 970 Product version from 10/1/2024

Parts for other  
finishes can be found  
here: [Chrome](#)



### Spare parts list

Number	Item Number	Designation	Number of units	Lead time
1	90 17 09 046 12 90	diverter	1	2
2	90 24 03 250 00 90	nipple	1	2
3	04 23 10 004 03 90	fixing set	1	2
4	09 18 40 090 90	sleeve	1	2
5	04 30 04 104 00 90	hose	1	2
6	90 27 86 000 00-19	rosette	1	-
Spare part can no longer be ordered, please order the replacement item				
7	09 14 10 120 90	seal	1	2
8	09 14 10 031 90	seal	1	2
9	04 17 20 014 00-19	holder	1	60
10	09 31 11 049 90	pin	1	2
11	09 14 15 012 90	ring	1	2
12	09 14 10 003 90	seal	1	2
13	09 30 01 067 10-19	adaptor	1	60
14	90 23 01 141 00 90	back-flow preventer	1	2
15	09 23 01 046 90	back-flow preventer	1	2
16	90 30 02 065 00-19	hose	1	20
17	09 16 02 034 90	spring	1	2
18	90 18 40 035 00 90	sleeve	1	2
19	04 12 11 094 10-19	shower	1	60