

Profi side spray set - Brushed Bronze

SERIES-VARIOUS

27 799 970

Product version from 10/1/2024



- Spray mode
- Automatic diverter
- Total height 26-1/8"
- Flange diameter 2-1/8"
- Profi spray hole diameter 1-1/8"
- Sprayface with descaling system
- Profispray arm can be pivoted or locked into place
- lead-free




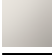



Can only be combined with 32815682, 33826861, 32815861, 33836888, 32816888, 20816892, 33836875, 32815875.

Internal backflow preventer.

Flexible positioning of components.

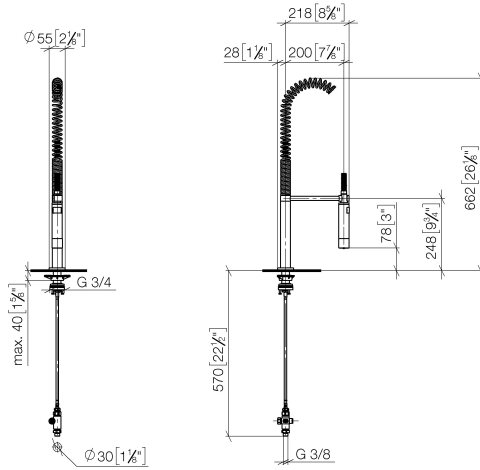
Button has to be pressed while using.

Profi spray set can be installed with or without flange

	Brushed Bronze	27 799 970-42
	Chrome	27 799 970-00
	Brushed Platinum	27 799 970-06
	Platinum	27 799 970-08
	Dark Chrome	27 799 970-19
	Brushed Chrome	27 799 970-93
	Brushed Dark Platinum	27 799 970-99

27 799 970 Product version from 10/1/2024

mm [inches]
1:10



Flow rate chart



Codes & Standards

DIN 4109

EN 1717

ISO 3822

NSF372

NSF61

Ü-Zeichen



Profi side spray set - Brushed Bronze

SERIES-VARIOUS

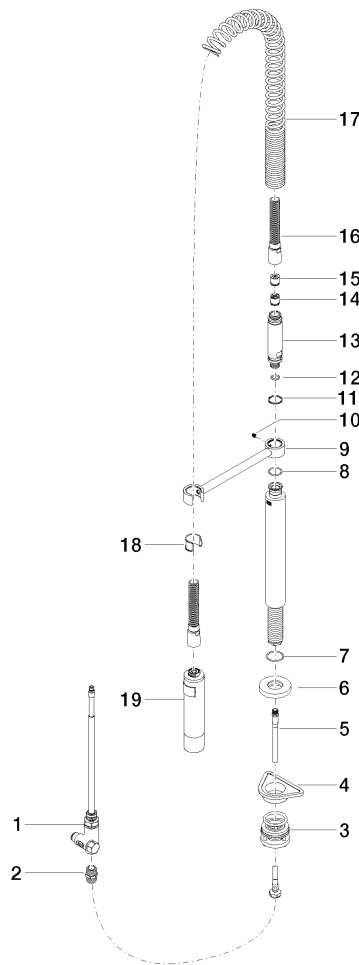
27 799 970 Product version from 10/1/2024

Certificates and sustainability

IAPMO_6397 LGA_38 Belgaqua_24-005-2 IAPMO_N-4976

27 799 970 Product version from 10/1/2024

Parts for other
finishes can be found
here: [Chrome](#)



Spare parts list

Number	Item Number	Designation	Number of units	Lead time
	13 09 30 01 067 10-42	adaptor	1.00	60
	6 90 27 86 000 00-42	rosette	1.00	30
	15 09 23 01 046 90	back-flow preventer	1.00	2
	14 90 23 01 141 00 90	back-flow preventer	1.00	2
	9 04 17 20 014 00-42	holder	1.00	60
	8 09 14 10 031 90	seal	1.00	2
	5 04 30 04 104 00 90	hose	1.00	2
	3 04 23 10 004 03 90	fixing set	1.00	2
	17 09 16 02 034 90	spring	1.00	2
	18 90 18 40 035 00 90	sleeve	1.00	2
	1 90 17 09 046 12 90	diverter	1.00	2
	16 90 30 02 065 00-42	hose	1.00	50
	19 04 12 11 094 10-42	shower	1.00	60
	12 09 14 10 003 90	seal	1.00	2
	2 90 24 03 250 00 90	nipple	1.00	2
	10 09 31 11 049 90	pin	1.00	2
	4 09 18 40 090 90	sleeve	1.00	2
	11 09 14 15 012 90	ring	1.00	2
	7 09 14 10 120 90	seal	1.00	2