





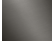


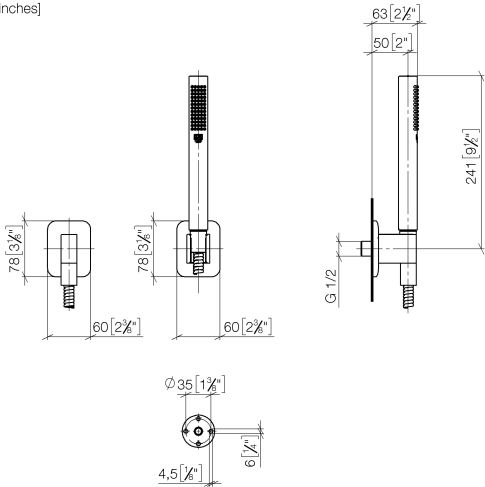


- COMPACT RAIN, flow rate max. 1.8 gpm (at 3 bar)
- Descaling system
- 3/8" Shower outlet
- Flange for wall elbow 2-3/8" x 3-1/8"
- Wall bracket with flange 2-3/8" x 3-1/8"
- Metal shower hose 49-1/4" with anti-twist device
- 1/2" wall elbow
- This product reduces water consumption by 28% (compared to requirements of EPAct '92)
- This product contributes to meeting the requirements of the LEED® Green Building Rating
- This product can help a building meet the requirements of Green Building Rating Systems, e.g. LEED®, BREEAM®, DGNB

Internal backflow preventer.

	Brushed Chrome	27 802 845-93 0010
	Chrome	27 802 845-00 0010
	Brushed Platinum	27 802 845-06 0010
	Dark Chrome	27 802 845-19 0010
	Brushed Light Gold	27 802 845-27 0010
	Matte Black	27 802 845-33 0010
	Brushed Dark Platinum	27 802 845-99 0010

mm [inches]



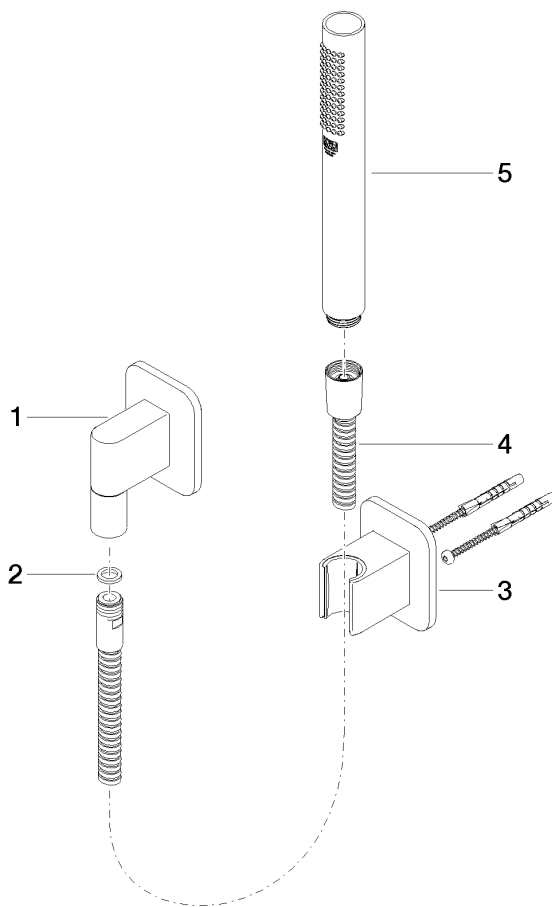
Codes & Standards

ASME A112.18.1	California Energy Commission (CEC)	cUPC	DIN 4109
ISO 3822	Ü-Zeichen		

Certificates and sustainability

LGA\_29                      IAPMO\_4976

Parts for other  
finishes can be found  
here: [Chrome](#)



## Spare parts list

Number	Item Number	Designation	Number of units	Lead time
4	90 30 02 072 00-93	Metal shower hose 1/2" x 3/8" x 49-1/4" - Brushed Chrome	1.00	20
1	28 450 845-93	LISSÉ Wall elbow - Brushed Chrome	1.00	10
3	28 050 845-93	LISSÉ Wall bracket - Brushed Chrome	1.00	20
5	90 12 11 140 30-93	shower	1.00	60
2	90 14 20 026 00 90	seal	1.00	2