

META Hand shower set FlowReduce - Brushed Platinum

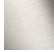





META

27 805 625 Product version from 6/30/2015 to 5/15/2020



- COMPACT RAIN, flow rate max. 1.8 gpm (at 3 bar)
- Ø 3-7/8"
- 3 individual sprays (standard, soft, massage) + 2 combinations (standard+soft, soft+massage)
- Descaling system
- Metal shower hose 49-1/4" with anti-twist device
- Showerhead holder flange Ø 2-1/8"
- This product reduces water consumption by 28% (compared to requirements of EPA '92)
- This product contributes to meeting the requirements of the LEED® Green Building Rating
- This product can help a building meet the requirements of Green Building Rating Systems, e.g. LEED®, BREEAM®, DGNB

Internal backflow preventer.

	Brushed Platinum	27 805 625-06 0010
	Chrome	27 805 625-00 0010
	Dark Chrome	27 805 625-19 0010
	Light gold	27 805 625-26 0010
	Brushed Light Gold	27 805 625-27 0010
	Brushed Durabrass (23kt Gold)	27 805 625-28 0010
	Matte Black	27 805 625-33 0010
	Brushed Dark Brass	27 805 625-39 0010
	Brushed Bronze	27 805 625-42 0010
	Brushed Champagne (22kt Gold)	27 805 625-46 0010
	Champagne (22kt Gold)	27 805 625-47 0010
	Brushed Chrome	27 805 625-93 0010
	Brushed Dark Platinum	27 805 625-99 0010

Recommended article



- Rough-in adapter -** 35 080 970-90
- Please order rough-in adapter 35 080 970-90 0010 if installed with wall elbow.

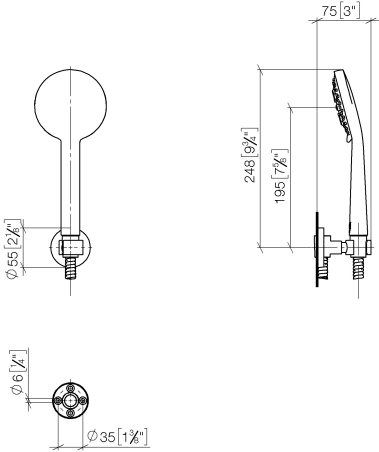
Recommended article



- Wall elbow - Brushed Platinum** 28 450 625-06

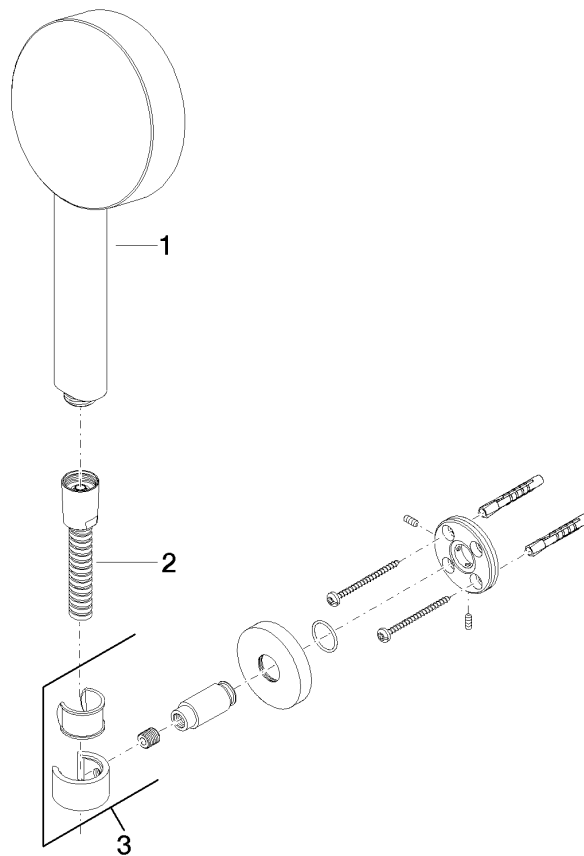
27 805 625 Product version from 6/30/2015 to 5/15/2020

mm [inches]



Codes & Standards			
ASME A112.18.1	California Energy Commission (CEC)	cUPC	DIN 4109
ISO 3822	Ü-Zeichen		

Certificates and sustainability	
LGA_29	IAPMO_4976



Spare parts list

Number	Item Number	Designation	Number of units	Lead time
3	28 050 625-06	Wall bracket - Brushed Platinum	1.00	10
1	28 011 979-06 0010	shower	1.00	60
2	90 30 02 072 00-06	Metal shower hose 1/2" x 3/8" x 49-1/4" - Brushed Platinum	1.00	10