

## Hand shower set with cover plate FlowReduce - Platinum

SERIES SPECIFIC

27 818 980 Product version up to 7/19/2018



- COMPACT RAIN, flow rate max. 1.8 gpm (at 3 bar)
- Metal shower hose 49-1/4" with anti-twist device
- 3/8" Shower outlet
- Descaling system

### Technical data:

- Cover plate 9-1/2" x 2-3/8"
- 1/2" wall elbow

### Notes:

#### Internal backflow preventer.

Internal backflow preventer.

	Platinum	27 818 980-08 0010
	Chrome	27 818 980-00 0010
	Brushed Platinum	27 818 980-06 0010
	Dark Chrome	27 818 980-19 0010
	Brushed Durabronze (23kt Gold)	27 818 980-28 0010
	Matte Black	27 818 980-33 0010
	Brushed Dark Brass	27 818 980-39 0010
	Brushed Champagne (22kt Gold)	27 818 980-46 0010
	Champagne (22kt Gold)	27 818 980-47 0010
	Brushed Chrome	27 818 980-93 0010
	Brushed Dark Platinum	27 818 980-99 0010

## Required article

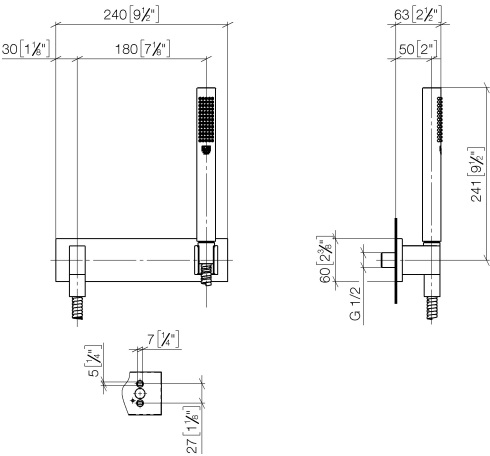
Rough-in adapter -

35 080 970-90  
0010



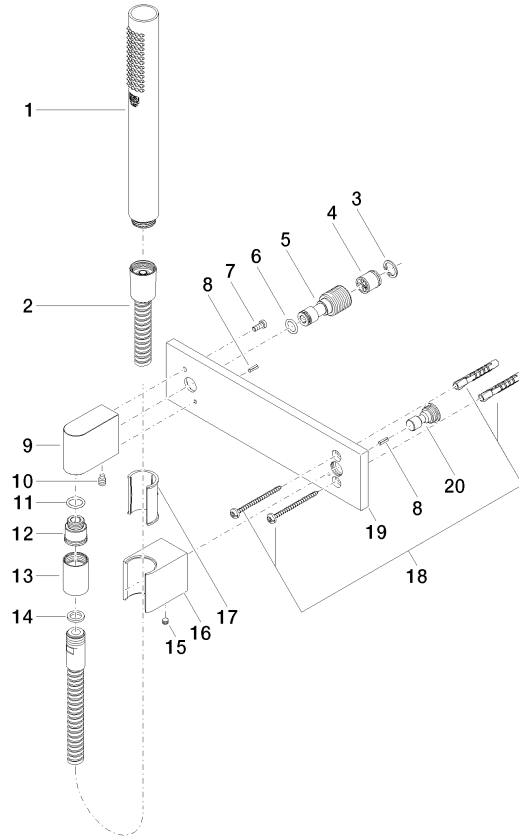
27 818 980    Product version up to 7/19/2018

mm [inches]



Codes & Standards			
ASME A112.18.1	California Energy Commission (CEC)	cUPC	DIN 4109
ISO 3822	Ü-Zeichen		

Certificates and sustainability	
LGA_29	IAPMO_4976



## Spare parts list

Number	Item Number	Designation	Number of units	Lead time
18	05 30 31 025 00 90	fixing set	1.00	2
5	09 24 03 116 20 90	nipple	1.00	2
4	90 23 01 040 00 90	back-flow preventer	1.00	2
6	09 14 10 008 90	seal	1.00	2
3	09 16 01 014 90	ring	1.00	2
19	09 11 02 120-08	plate	1.00	40
20	09 24 03 073 90	nipple	1.00	2
10	04 31 11 140 00 90	pin	1.00	2
17	09 18 40 078 90	sleeve	1.00	2
8	09 31 11 026 90	pin	2.00	2
7	09 30 30 054 90	screw	1.00	2
2	90 30 02 072 00-08	Metal shower hose 1/2" x 3/8" x 49-1/4" - Platinum	1.00	40
12	09 24 03 107 20 90	nipple	1.00	2
9	09 11 03 026 20-08	connection	1.00	60
16	09 17 20 035-08	holder	1.00	60
11	90 14 10 077 00 90	seal	1.00	2
13	90 21 02 069 00-08	cover	1.00	40
14	90 14 20 026 00 90	seal	1.00	2
15	90 31 11 112 00 90	pin	1.00	2
1	90 12 11 140 41-08	shower	1.00	40