


WATER TUBE Kneipp wall elbow with hose bracket with individual flanges -
Chrome


SERIES SPECIFIC

27 821 979


Product version up to 3/12/2018

	<ul style="list-style-type: none"> • LAMINAR FLOW, max. flow rate 4 gpm (at 3 bar) • with volume control • Flange 2-3/8" x 2-3/8" • Bracket for Kneipp hose • 1/2" wall elbow • Hose to be ordered separately 	<div>Chrome</div> <div>27 821 979-00</div>
	<p>Internal backflow preventer.</p> <p>Product change as of 1.4.2023: Water flow rate limited to max. 4 gpm</p> <p>Internal backflow preventer.</p> <p>Product change as of 1.4.2023: Water flow rate limited to max. 4 gpm</p>	<div>Brushed Platinum</div> <div>27 821 979-06</div>
		<div>Platinum</div> <div>27 821 979-08</div>
		<div>Dark Chrome</div> <div>27 821 979-19</div>
		<div>Brushed Light Gold</div> <div>27 821 979-27</div>
		<div>Brushed Durabrass (23kt Gold)</div> <div>27 821 979-28</div>
		<div>Matte Black</div> <div>27 821 979-33</div>
		<div>Brushed Dark Brass</div> <div>27 821 979-39</div>
		<div>Brushed Champagne (22kt Gold)</div> <div>27 821 979-46</div>
		<div>Champagne (22kt Gold)</div> <div>27 821 979-47</div>
		<div>Brushed Chrome</div> <div>27 821 979-93</div>
		<div>Brushed Dark Platinum</div> <div>27 821 979-99</div>


Required article

	<div>Rough-in adapter -</div> <div>35 080 970-90 0010</div>

Required article

	<div>WATER TUBE Kneipp hose black 78-3/4" - Chrome</div> <div>28 286 979-00</div>
	<ul style="list-style-type: none"> •With holding ring •Hose nozzle with sleeve

Required article

	<div>WATER TUBE Kneipp hose white 78-3/4" - Chrome</div> <div>28 285 979-00</div>
	<ul style="list-style-type: none"> •With holding ring •Hose nozzle with sleeve

WATER TUBE Kneipp wall elbow with hose bracket with individual flanges - Chrome

SERIES SPECIFIC

27 821 979 Product version up to 3/12/2018
mm [inches]



Flow rate chart



Codes & Standards

EN 1717



WATER TUBE Kneipp wall elbow with hose bracket with individual flanges - Chrome

SERIES SPECIFIC

27 821 979 Product version up to 3/12/2018

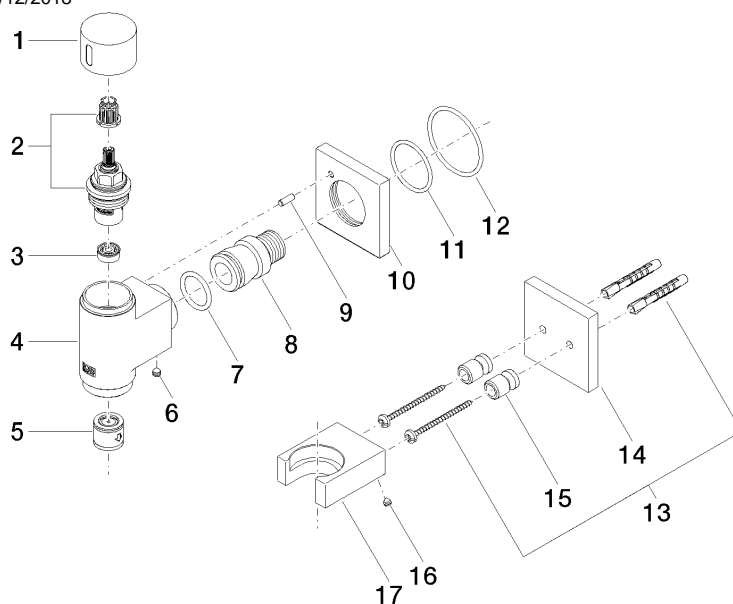
Certificates and sustainability

Belgaqua_22_280_2

WATER TUBE Kneipp wall elbow with hose bracket with individual flanges - Chrome

SERIES SPECIFIC

27 821 979 Product version up to 3/12/2018



Spare parts list

Number	Item Number	Designation	Number of units	Lead time
8	09 24 03 151 90	nipple	1.00	2
6	90 31 11 112 00 90	pin	1.00	2
12	90 14 10 049 00 90	seal	1.00	2
1	09 20 97 021-00	handle	1.00	10
13	05 30 31 025 00 90	fixing set	1.00	2
5	90 23 01 045 00 90	back-flow preventer	1.00	2
14	09 27 97 022-00	rosette	1.00	10
16	09 31 11 148 90	pin	2.00	2
4	09 11 03 135-00	connection	1.00	10
7	09 14 10 081 90	seal	1.00	2
11	09 14 10 119 90	seal	1.00	2
3	90 23 01 146 00 90	flow reducer	1.00	2
9	09 31 11 040 90	pin	1.00	2
15	08 17 20 726 90	holder	2.00	2
17	09 17 20 023-00	holder	1.00	10
10	09 27 97 021-00	rosette	1.00	10
2	90 90 03 145 00 90	top	1.00	2