



WATER TUBE Kneipp wall elbow with hose bracket with individual flanges -  
Platinum

SERIES SPECIFIC

27 821 979    Product version up to 3/12/2018



- LAMINAR FLOW, max. flow rate 4 gpm (at 3 bar)
  - with volume control
  - Flange 2-3/8" x 2-3/8"
  - Bracket for Kneipp hose
  - 1/2" wall elbow
  - Hose to be ordered separately
- Internal backflow preventer.**


**Product change as of 1.4.2023: Water flow rate limited to max. 4 gpm**

Internal backflow preventer.


Product change as of 1.4.2023: Water flow rate limited to max. 4 gpm

	Platinum	27 821 979-08
	Chrome	27 821 979-00
	Brushed Platinum	27 821 979-06
	Dark Chrome	27 821 979-19
	Brushed Light Gold	27 821 979-27
	Brushed Durabrass (23kt Gold)	27 821 979-28
	Matte Black	27 821 979-33
	Brushed Dark Brass	27 821 979-39
	Brushed Champagne (22kt Gold)	27 821 979-46
	Champagne (22kt Gold)	27 821 979-47
	Brushed Chrome	27 821 979-93
	Brushed Dark Platinum	27 821 979-99


Required article

	<b>Rough-in adapter -</b>	35 080 970-90 0010
-------------------------------------------------------------------------------------	---------------------------	--------------------

Required article

	<b>WATER TUBE Kneipp hose black 78-3/4" - Platinum</b>	28 286 979-08
	•With holding ring	
	•Hose nozzle with sleeve	

Required article

	<b>WATER TUBE Kneipp hose white 78-3/4" - Platinum</b>	28 285 979-08
	•With holding ring	
	•Hose nozzle with sleeve	

## WATER TUBE Kneipp wall elbow with hose bracket with individual flanges - Platinum

SERIES SPECIFIC

27 821 979 Product version up to 3/12/2018  
mm [inches]



### Flow rate chart



### Codes & Standards

EN 1717



## WATER TUBE Kneipp wall elbow with hose bracket with individual flanges - Platinum

SERIES SPECIFIC

---

27 821 979 Product version up to 3/12/2018

Certificates and sustainability

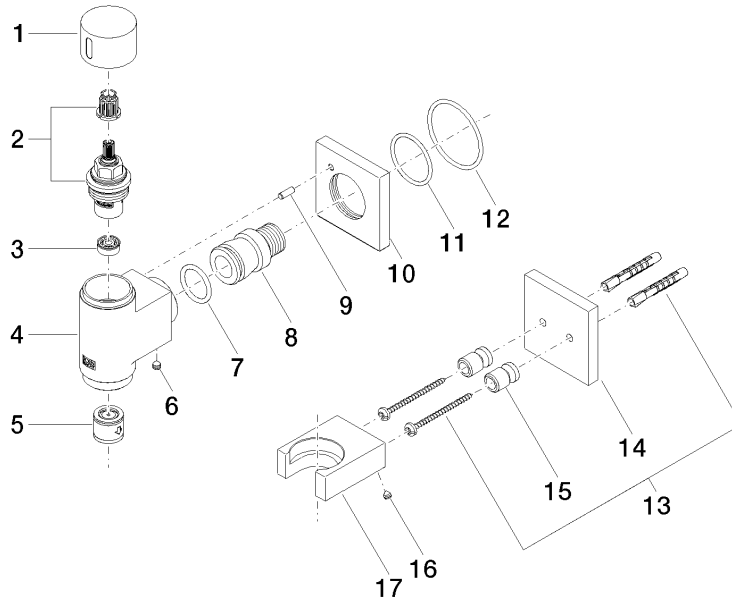
---

Belgaqua\_22\_280\_2

# WATER TUBE Kneipp wall elbow with hose bracket with individual flanges - Platinum

SERIES SPECIFIC

27 821 979 Product version up to 3/12/2018



## Spare parts list

Number	Item Number	Designation	Number of units	Lead time
17	09 17 20 023-08	holder	1.00	40
14	09 27 97 022-08	rosette	1.00	40
15	08 17 20 726 90	holder	2.00	2
2	90 90 03 145 00 90	top	1.00	2
9	09 31 11 040 90	pin	1.00	2
16	09 31 11 148 90	pin	2.00	2
3	90 23 01 146 00 90	flow reducer	1.00	2
6	90 31 11 112 00 90	pin	1.00	2
1	09 20 97 021-08	handle	1.00	40
10	09 27 97 021-08	rosette	1.00	40
4	09 11 03 135-08	connection	1.00	60
13	05 30 31 025 00 90	fixing set	1.00	2
7	09 14 10 081 90	seal	1.00	2
5	90 23 01 045 00 90	back-flow preventer	1.00	2
11	09 14 10 119 90	seal	1.00	2
12	90 14 10 049 00 90	seal	1.00	2
8	09 24 03 151 90	nipple	1.00	2