



WATER TUBE Kneipp wall elbow with hose bracket with individual flanges -
Platinum

27 823 979 Product version from 10/1/2023



- LAMINAR FLOW, max. flow rate 2.5 gpm (at 3 bar)
 - with volume control
 - Flange diameter 2-3/8"
 - Bracket for Kneipp hose
 - 1/2" wall elbow
 - Hose to be ordered separately
- Internal backflow preventer.**

Internal backflow preventer.

	Platinum	27 823 979-08 0010
	Chrome	27 823 979-00 0010
	Chrome	27 823 979-00
	Brushed Platinum	27 823 979-06 0010
	Brushed Platinum	27 823 979-06
	Platinum	27 823 979-08
	Dark Chrome	27 823 979-19 0010
	Dark Chrome	27 823 979-19
	Light gold	27 823 979-26
	Light gold	27 823 979-26 0010
	Brushed Light Gold	27 823 979-27
	Brushed Light Gold	27 823 979-27 0010
	Brushed Durabrass (23kt Gold)	27 823 979-28 0010
	Brushed Durabrass (23kt Gold)	27 823 979-28
	Matte Black	27 823 979-33 0010
	Matte Black	27 823 979-33
	Brushed Dark Brass	27 823 979-39
	Brushed Bronze	27 823 979-42 0010
	Brushed Bronze	27 823 979-42
	Brushed Champagne (22kt Gold)	27 823 979-46 0010
	Brushed Champagne (22kt Gold)	27 823 979-46
	Champagne (22kt Gold)	27 823 979-47 0010
	Champagne (22kt Gold)	27 823 979-47
	Brushed Chrome	27 823 979-93 0010
	Brushed Chrome	27 823 979-93
	Brushed Dark Platinum	27 823 979-99 0010



WATER TUBE Kneipp wall elbow with hose bracket with individual flanges -
Platinum


27 823 979 Product version from 10/1/2023



Brushed Dark
Platinum

27 823 979-99


Required article

	Rough-in adapter -	35 080 970-90 0010
---	---------------------------	-----------------------

Required article

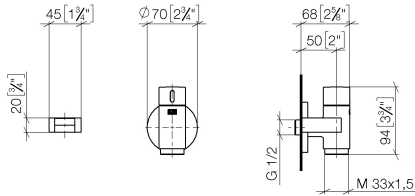
	WATER TUBE Kneipp hose black 78-3/4" - Platinum	28 286 979-08
	•Hose nozzle with sleeve	
	•With holding ring	

Required article

	WATER TUBE Kneipp hose white 78-3/4" - Platinum	28 285 979-08
	•Hose nozzle with sleeve	
	•With holding ring	

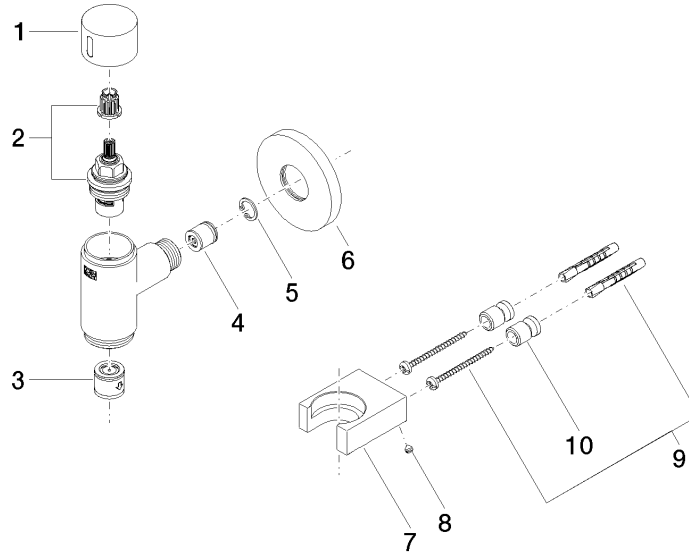
WATER TUBE Kneipp wall elbow with hose bracket with individual flanges - Platinum

27 823 979 Product version from 10/1/2023
mm [inches]



WATER TUBE Kneipp wall elbow with hose bracket with individual flanges - Platinum

27 823 979 Product version from 10/1/2023



Spare parts list

Number	Item Number	Designation	Number of units	Lead time
1	09 20 97 021-08	handle	1	40
2	90 90 03 145 00 90	top	1	2
3	90 23 01 045 00 90	back-flow preventer	1	2
4	09 23 01 069 90	flow reducer	1	2
5	09 16 01 014 90	ring	1	2
6	90 27 97 023 00-08	rosette	1	40
7	09 17 20 023-08	holder	1	40
8	09 31 11 148 90	pin	1	2
9	05 17 20 726 02 90	fixing set	1	2
10	08 17 20 726 90	holder	1	2