



WATER TUBE Kneipp wall elbow with hose bracket with individual flanges

FlowReduce - Brushed Dark Brass

SERIES SPECIFIC

27 841 979    Product version from 6/1/2024



- LAMINAR FLOW, max. flow rate 2.4 gpm (at 3 bar)
  - with volume control
  - Flange 2-3/8" x 2-3/8"
  - Bracket for Kneipp hose
  - 1/2" wall elbow
  - Hose to be ordered separately
  - This product can help a building meet the requirements of Green Building Rating Systems, e.g. LEED®, BREEAM®, DGNB
- Internal backflow preventer.

	Brushed Dark Brass	27 841 979-39
	Chrome	27 841 979-00
	Brushed Platinum	27 841 979-06
	Platinum	27 841 979-08
	Dark Chrome	27 841 979-19
	Brushed Light Gold	27 841 979-27
	Brushed Durabrass (23kt Gold)	27 841 979-28
	Matte Black	27 841 979-33
	Brushed Champagne (22kt Gold)	27 841 979-46
	Champagne (22kt Gold)	27 841 979-47
	Brushed Chrome	27 841 979-93
	Brushed Dark Platinum	27 841 979-99

## WATER TUBE Kneipp wall elbow with hose bracket with individual flanges FlowReduce - Brushed Dark Brass

SERIES SPECIFIC

27 841 979 Product version from 6/1/2024  
mm [inches]



### Flow rate chart



### Codes & Standards

EN 1717



## WATER TUBE Kneipp wall elbow with hose bracket with individual flanges FlowReduce - Brushed Dark Brass

---

SERIES SPECIFIC

27 841 979 Product version from 6/1/2024

Certificates and sustainability

---

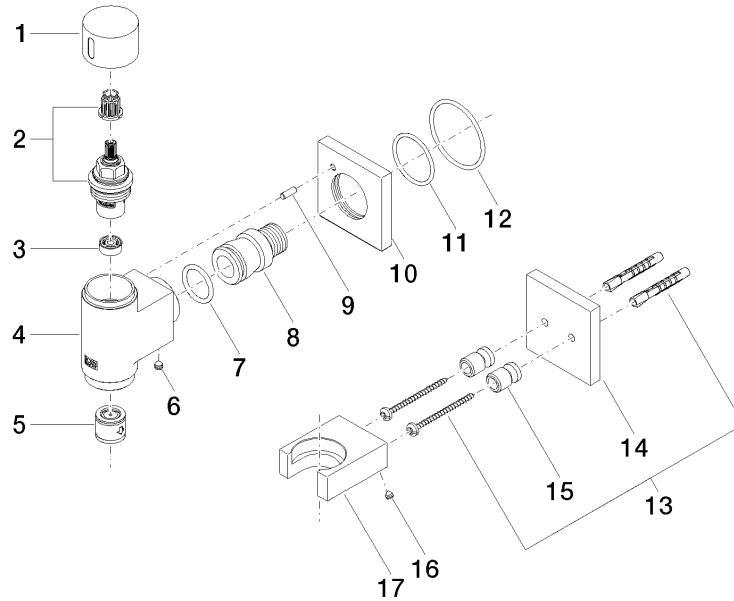
Belgaqua\_24-007-2

# WATER TUBE Kneipp wall elbow with hose bracket with individual flanges FlowReduce - Brushed Dark Brass

SERIES SPECIFIC

27 841 979 Product version from 6/1/2024

Parts for other  
finishes can be found  
here: [Chrome](#)





## WATER TUBE Kneipp wall elbow with hose bracket with individual flanges FlowReduce - Brushed Dark Brass

SERIES SPECIFIC

27 841 979 Product version from 6/1/2024

### Spare parts list

Number	Item Number	Designation	Number of units	Lead time
3	90 23 01 145 00 90	flow reducer	1.00	2
2	90 90 03 145 00 90	top	1.00	2
10	09 27 97 021-39	rosette	1.00	-
Spare part can no longer be ordered, please order the replacement item				
6	90 31 11 112 00 90	pin	1.00	2
8	09 24 03 151 90	nipple	1.00	2
4	09 11 03 135-39	connection	1.00	-
Spare part can no longer be ordered, please order the replacement item				
11	09 14 10 119 90	seal	1.00	2
9	09 31 11 040 90	pin	1.00	2
15	08 17 20 726 90	holder	1.00	2
14	09 27 97 022-39	rosette	1.00	-
Spare part can no longer be ordered, please order the replacement item				
13	05 30 31 025 00 90	fixing set	1.00	2
16	09 31 11 148 90	pin	2.00	2
5	90 23 01 045 00 90	back-flow preventer	1.00	2
1	09 20 97 021-39	handle	1.00	60
12	90 14 10 049 00 90	seal	1.00	2
7	09 14 10 081 90	seal	1.00	2
17	09 17 20 023-39	holder	1.00	60