

WATER TUBE Kneipp wall elbow with hose bracket with individual flanges
FlowReduce - Light gold

27 843 979

Product version from 4/1/2024

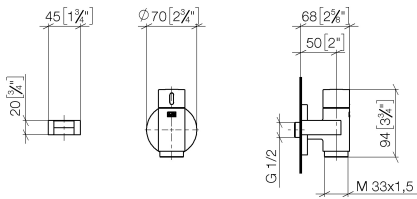


- LAMINAR FLOW, max. flow rate 2.4 gpm (at 3 bar)
  - with volume control
  - Flange diameter 2-3/4"
  - Bracket for Kneipp hose
  - 1/2" wall elbow
  - Hose to be ordered separately
  - This product can help a building meet the requirements of Green Building Rating Systems, e.g. LEED®, BREEAM®, DGNB
- Internal backflow preventer.

	Light gold	27 843 979-26
	Chrome	27 843 979-00
	Brushed Platinum	27 843 979-06
	Platinum	27 843 979-08
	Dark Chrome	27 843 979-19
	Brushed Light Gold	27 843 979-27
	Brushed Durabrass (23kt Gold)	27 843 979-28
	Matte Black	27 843 979-33
	Brushed Bronze	27 843 979-42
	Brushed Champagne (22kt Gold)	27 843 979-46
	Champagne (22kt Gold)	27 843 979-47
	Brushed Chrome	27 843 979-93
	Brushed Dark Platinum	27 843 979-99

**WATER TUBE Kneipp wall elbow with hose bracket with individual flanges**  
**FlowReduce - Light gold**

27 843 979    Product version from 4/1/2024  
 mm [inches]



**Flow rate chart**



**Codes & Standards**

EN 1717



## WATER TUBE Kneipp wall elbow with hose bracket with individual flanges FlowReduce - Light gold

---

27 843 979 Product version from 4/1/2024

### Certificates

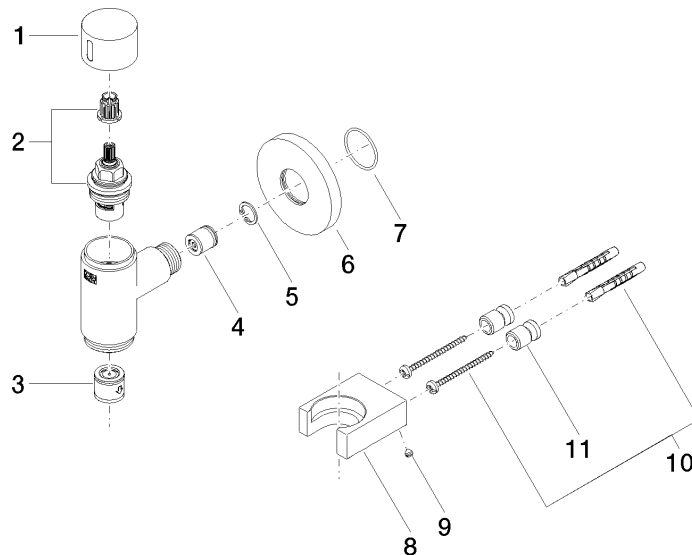
---

Belgaqua\_24-007-2

## WATER TUBE Kneipp wall elbow with hose bracket with individual flanges FlowReduce - Light gold

27 843 979 Product version from 4/1/2024

Parts for other  
finishes can be found  
here: [Chrome](#)



### Spare parts list

Number	Item Number	Designation	Number of units	Lead time
1	09 20 97 021-26	handle	1	60
2	90 90 03 145 00 90	top	1	2
3	90 23 01 045 00 90	back-flow preventer	1	2
4	09 23 01 077 90	flow reducer	1	2
5	09 16 01 014 90	ring	1	2
6	09 27 97 020-26	rosette	1	60
7	09 14 10 135 90	seal	1	2
8	09 17 20 023-26	holder	1	60
9	09 31 11 148 90	pin	2	2
10	05 30 31 025 00 90	fixing set	1	2
11	08 17 20 726 90	holder	1	2