









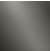
MADISON Metal hand shower with porcelain (white) handle FlowReduce -
Brushed Platinum

28 002 970



- COMPACT RAIN, flow rate max. 1.8 gpm (at 3 bar)
- Ø 2-1/2"
- 1/2" connection
- This product reduces water consumption by 28% (compared to requirements of EPAAct '92)
- This product contributes to meeting the requirements of the LEED® Green Building Rating
- This product can help a building meet the requirements of Green Building Rating Systems, e.g. LEED®, BREEAM®, DGNB

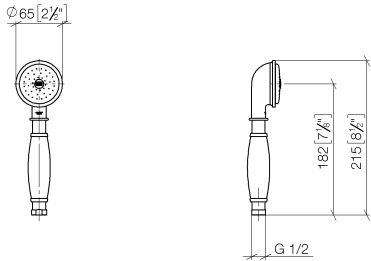
Internal backflow preventer.

| | | |
|---|-------------------------------|--------------------|
|  | Brushed Platinum | 28 002 970-06 0010 |
|  | Chrome | 28 002 970-00 0010 |
|  | Platinum | 28 002 970-08 0010 |
|  | Durabrass (23kt Gold) | 28 002 970-09 0010 |
|  | Brushed Durabrass (23kt Gold) | 28 002 970-28 0010 |
|  | Brushed Chrome | 28 002 970-93 0010 |
|  | Brushed Dark Platinum | 28 002 970-99 0010 |

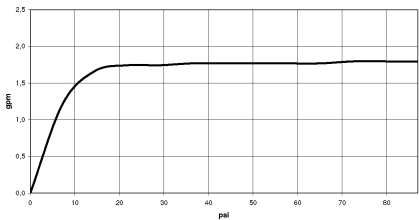


MADISON Metal hand shower with porcelain (white) handle FlowReduce -
Brushed Platinum

28 002 970
mm [inches]



Flow rate chart



Codes & Standards

| | | | |
|----------------|------------------------------------|-------------|----------|
| ASME A112.18.1 | California Energy Commission (CEC) | cUPC | DIN 4109 |
| ISO 3822 | Ü-Zeichen | Water Sense | |



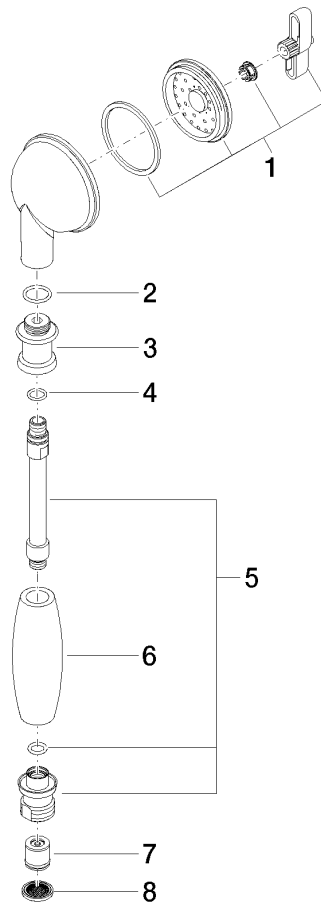
MADISON Metal hand shower with porcelain (white) handle FlowReduce -
Brushed Platinum

28 002 970
Certificates

LGA_8 IAPMO_4976 (

**MADISON Metal hand shower with porcelain (white) handle FlowReduce -
Brushed Platinum**

28 002 970
Parts for other
finishes can be found
here: [Chrome](#)



Spare parts list

| Number | Item Number | Designation | Number of units | Lead time |
|--|--------------------|--------------|-----------------|-----------|
| 1 | 90 12 01 010 00 90 | set | 1 | 2 |
| 2 | 09 14 10 069 90 | seal | 1 | 2 |
| 3 | 09 24 04 059 20-06 | nipple | 1 | 10 |
| 4 | 09 14 10 042 90 | seal | 1 | 2 |
| 5 | 90 28 22 033 00-06 | insert | 1 | - |
| Spare part can no longer be ordered, please order the replacement item | | | | |
| 6 | 11 167 820 60 | handle | 1 | 2 |
| 7 | 09 23 01 166 90 | flow reducer | 1 | 2 |
| 8 | 09 23 01 039 90 | sieve | 1 | 2 |