

Rain shower flush mounted with light 11-3/4" x 9-1/2" - Brushed Chrome

SERIES SPECIFIC

28 044 980 Product version from 5/1/2022



- 11-3/4" x 9-1/2" Rain showerhead
- Rain panel with 2 different spray modes
- PURE RAIN, flow rate max. 1.8 gpm (at 3 bar)
- PURIFY RAIN, flow rate max. 1.6 gpm (at 3 bar)
- Descaling system

Technical data:

- Min. rough in depth 5-3/8"

Ceiling module power supply

- 12V DC (CV)

Electric:

Spot lighting

- Color LED light RGBW

Ambient lighting

- Lights protected against splashing

Control

- To be provided by the customer: Zigbee Gateway
- ZigBee Light Link RGBW Controller

Environment

Planning tips:

- Not suitable for outdoor use.
- Not suitable for use in a steam room.
- Not suitable for use in chlorinated or salty environments.
- Observe the regulations concerning protected zones specified in DIN VDE 0100, Part 701 (IEC 60364-7-701).
- Dornbracht recommends consulting a systems integrator.

To meet the North American plumbing standards, this application must be installed with a diverter (35 203 970-900010, 3-way diverter rough included and required for more restricted states). includes light bulbs of energy efficiency class G

Diverter trim is sold separately

To meet the North American plumbing standards, this application must be installed with a diverter (35 203 970-900010, 3-way diverter rough included and required for more restricted states).

includes light bulbs of energy efficiency class G

Diverter trim is sold separately

	Brushed Chrome	28 044 980-93 0010
	Chrome	28 044 980-00 0010
	Brushed Platinum	28 044 980-06 0010
	Platinum	28 044 980-08 0010
	Dark Chrome	28 044 980-19 0010
	Brushed Light Gold	28 044 980-27 0010
	Brushed Durabronze (23kt Gold)	28 044 980-28 0010
	Matte Black	28 044 980-33 0010
	Brushed Champagne (22kt Gold)	28 044 980-46 0010
	Champagne (22kt Gold)	28 044 980-47 0010
	Brushed Dark Platinum	28 044 980-99 0010



Rain shower flush mounted with light 11-3/4" x 9-1/2" - Brushed Chrome

SERIES SPECIFIC

28 044 980 Product version from 5/1/2022

Required article

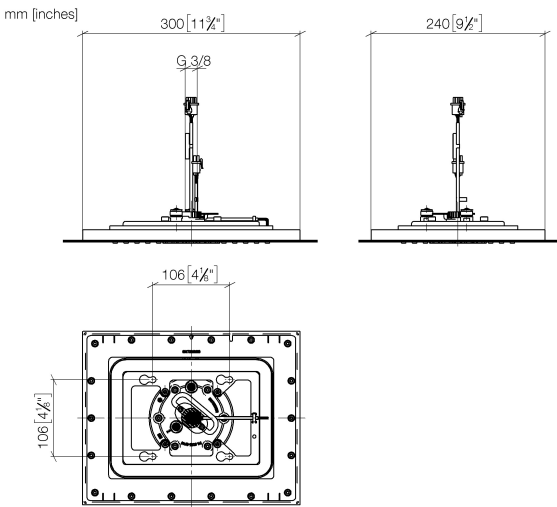


**Installation rough flush mounted
with light -** 35 044 970-90
0010

- Must be provided by the customer:
Zigbee Gateway!
- Installation depth 5-3/8"
- Pre-assembly kit for three-way
diverter included

Rain shower flush mounted with light 11-3/4" x 9-1/2" - Brushed Chrome SERIES SPECIFIC

28 044 980 Product version from 5/1/2022



Codes & Standards

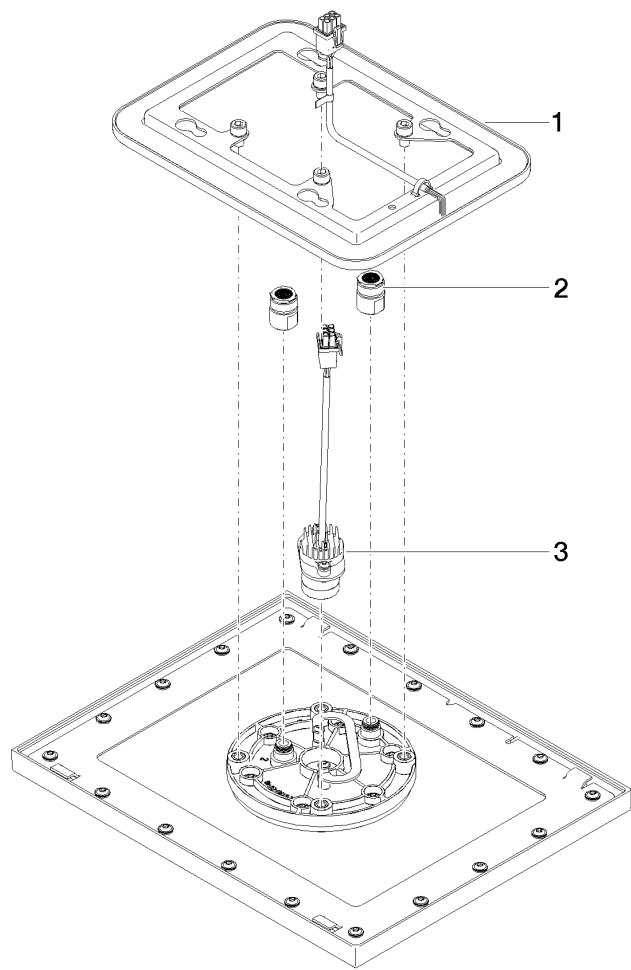
ASME A112.18.1	California Energy Commission (CEC)	cUPC	EPA WaterSense
----------------	------------------------------------	------	----------------

WaterSense



Certificates and sustainability

IAPMO_11777 IAPMO_4976



Spare parts list

Number	Item Number	Designation	Number of units	Lead time
1	90 10 01 224 00 90	electronic accessories	1.00	2
2	90 24 03 309 02 90	connection	2.00	2
3	90 10 01 225 00 90	electronic accessories	1.00	2