





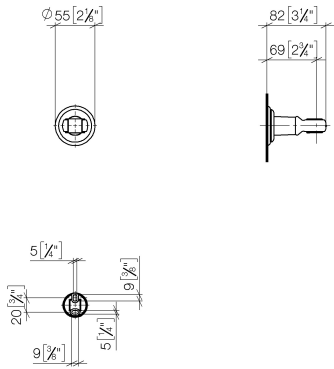
- Flange diameter 2-1/8"



	Platinum	28 050 361-08
	Chrome	28 050 361-00
	Brushed Platinum	28 050 361-06
	Durabronze (23kt Gold)	28 050 361-09
	Brushed Dark Brass	28 050 361-39

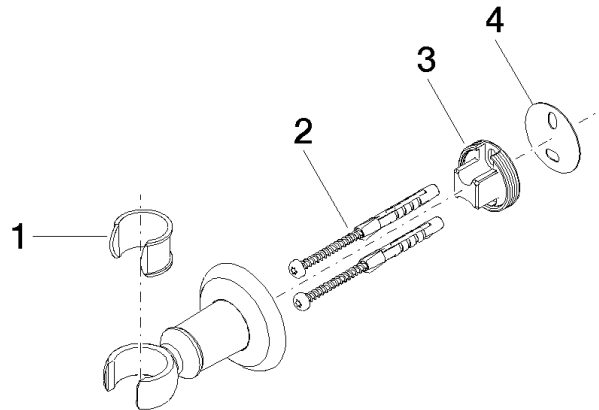
28 050 361 Product version from 7/3/2016

mm [inches]



28 050 361 Product version from 7/3/2016

Parts for other
finishes can be found
here: [Chrome](#)



Spare parts list

Number	Item Number	Designation	Number of units	Lead time
4	05 30 11 519 00 90	disc	1.00	2
2	05 30 31 025 00 90	fixing set	1.00	2
3	08 17 97 582 90	holder	1.00	2
1	90 18 40 035 00 90	sleeve	1.00	2