



VAIA Wall elbow - Brushed Dark Platinum


28 450 809 Product version from 7/6/2018




- 3/8" Shower outlet
 - Flange diameter 2-3/8"
 - 1/2" connection
- Internal backflow preventer.**
- Internal backflow preventer.

	Brushed Dark Platinum	28 450 809-99
	Chrome	28 450 809-00
	Brushed Platinum	28 450 809-06
	Platinum	28 450 809-08
	Dark Chrome	28 450 809-19
	Brushed Durabronze (23kt Gold)	28 450 809-28
	Brushed Bronze	28 450 809-42
	Brushed Champagne (22kt Gold)	28 450 809-46
	Champagne (22kt Gold)	28 450 809-47

Required article

	Rough-in adapter -	35 080 970-90 0010
---	---------------------------	--------------------

Required article

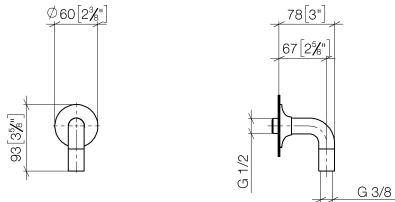
	Rough-in adapter -	35 080 970-90 0010
---	---------------------------	--------------------



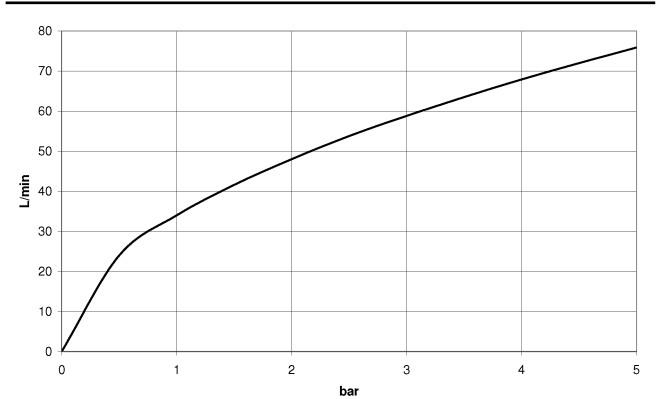
VAIA Wall elbow - Brushed Dark Platinum

28 450 809 Product version from 7/6/2018

mm [inches]



Flow rate chart



Codes & Standards

ASME A112.18.1	ASME A112.18.1/CSA B125.1	cUPC	EN 1717
Scottish Water Byelaws	UK Water Supply Regulations		



VAIA Wall elbow - Brushed Dark Platinum

28 450 809 Product version from 7/6/2018

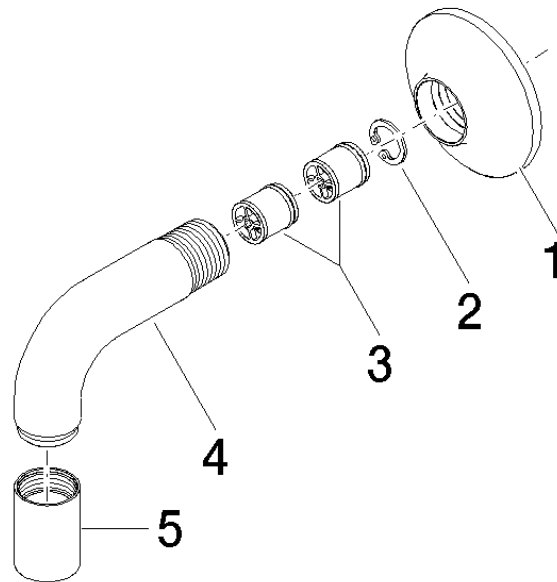
Certificates

Belgaqua_22_280_2 IAPMO_4976

WRAS_240702

VAIA Wall elbow - Brushed Dark Platinum

28 450 809 Product version from 7/6/2018



Spare parts list

Number	Item Number	Designation	Number of units	Lead time
1	90 27 80 021 00-99	rosette	1	20
2	09 16 01 014 90	ring	1	2
3	90 23 01 141 00 90	back-flow preventer	2	2
4	09 11 03 123-99	connection	1	20
5	90 21 02 069 00-99	cover	1	20