

## Showerhead - Brushed Platinum

28 504 670



- 7-1/8"-8-1/4" Projection
- Ball-joint pivotable through 30°
- PURIFY RAIN, flow rate max. 1.8 gpm (at 3 bar)
- Descaling system
- Ø 3-7/8"
- Flange 2-3/8" x 2-3/8"
- 1/2" connection
- Function from: 1.5 gpm
- This product reduces water consumption by 28% (compared to requirements of EPA '92)
- This product can help a building meet the requirements of Green Building Rating Systems, e.g. LEED®, BREEAM®, DGNB

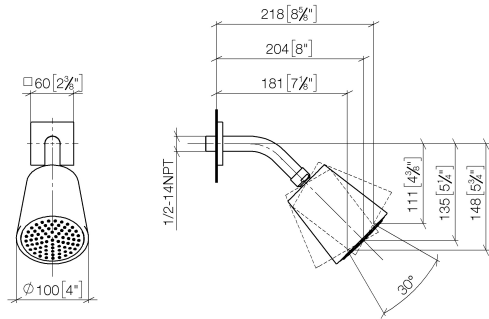
	Brushed Platinum	28 504 670-06 0010
	Chrome	28 504 670-00 0010
	Platinum	28 504 670-08 0010
	Dark Chrome	28 504 670-19 0010
	Brushed Light Gold	28 504 670-27 0010
	Brushed Durabrass (23kt Gold)	28 504 670-28 0010
	Matte Black	28 504 670-33 0010
	Brushed Champagne (22kt Gold)	28 504 670-46 0010
	Champagne (22kt Gold)	28 504 670-47 0010
	Brushed Chrome	28 504 670-93 0010
	Brushed Dark Platinum	28 504 670-99 0010



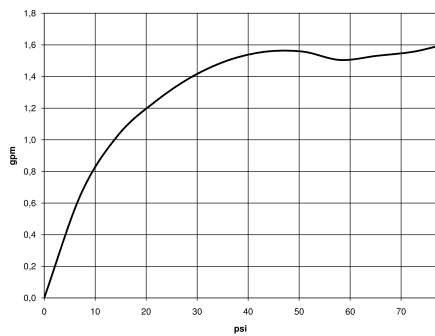
Showerhead - Brushed Platinum

28 504 670


mm [inches]



Flow rate chart



Codes & Standards

ASME A112.18.1	ASME A112.18.1/CSA B125.1	California Energy Commission (CEC)	cUPC
EPA WaterSense	Water Sense	WaterSense	



Showerhead - Brushed Platinum

---

28 504 670

Certificates

---

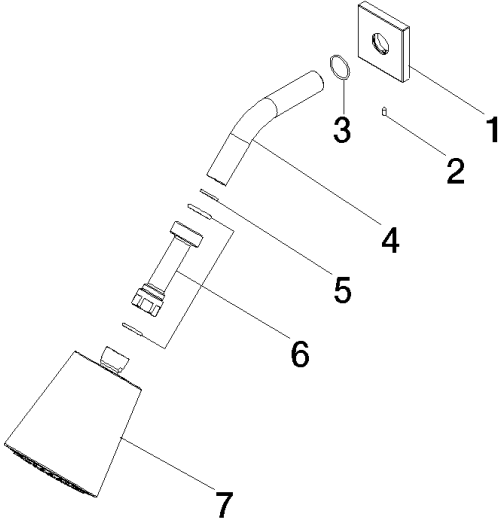
IAPMO\_4976

IAPMO\_11777

# Showerhead - Brushed Platinum

28 504 670

Parts for other  
finishes can be found  
here: [Chrome](#)



## Spare parts list

Number	Item Number	Designation	Number of units	Lead time
1	09 27 98 003-06	rosette	1	10
2	09 31 11 048 90	pin	1	2
3	90 14 10 026 00 90	seal	1	2
4	09 11 03 011-06	connection	1	10
5	90 14 20 002 00 90	seal	1	2
6	90 24 05 017 00 90	nipple	1	-
Spare part can no longer be ordered, please order the replacement item				
7	90 12 05 054 01-06	shower	1	10