

Showerhead - Chrome

28 505 979 Product version from 10/1/2023



- 6-1/8" Projection
- swivels 18°
- 3-way or 5-way adjustable: PURIFY RAIN, COMPACT SOFT FLOW, COMPACT AQUAPRESSURE FLOW, flow rate max. 1.8 gpm (at 3 bar)
- Descaling system
- Ø 3-7/8"
- Flange diameter 2-3/8"
- 1/2" connection
- Function from: 1.6 gpm
- This product can help a building meet the requirements of Green Building Rating Systems, e.g. LEED®, BREEAM®, DGNB

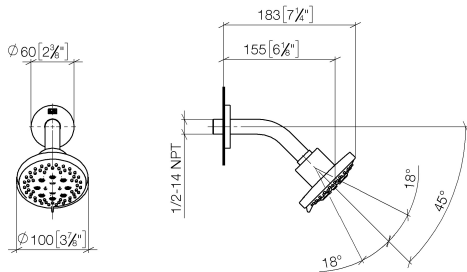
| | | |
|---|--------------------------------|--------------------|
|  | Chrome | 28 505 979-00 0010 |
|  | Brushed Platinum | 28 505 979-06 0010 |
|  | Platinum | 28 505 979-08 0010 |
|  | Dark Chrome | 28 505 979-19 0010 |
|  | Light gold | 28 505 979-26 0010 |
|  | Brushed Light Gold | 28 505 979-27 0010 |
|  | Brushed Durabronze (23kt Gold) | 28 505 979-28 0010 |
|  | Matte Black | 28 505 979-33 0010 |
|  | Brushed Bronze | 28 505 979-42 0010 |
|  | Brushed Champagne (22kt Gold) | 28 505 979-46 0010 |
|  | Champagne (22kt Gold) | 28 505 979-47 0010 |
|  | Brushed Chrome | 28 505 979-93 0010 |
|  | Brushed Dark Platinum | 28 505 979-99 0010 |



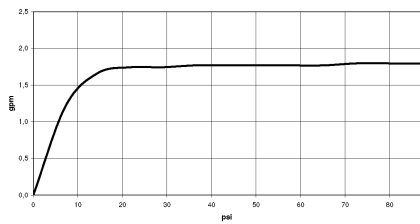
Showerhead - Chrome

28 505 979 Product version from 10/1/2023

mm [inches]



Flow rate chart



Codes & Standards

| | | | |
|----------------|---------------------------------|--|------|
| ASME A112.18.1 | ASME A112.18.1/CSA B125.1 | California Energy Commission (CEC) | cUPC |
| Water Sense | | | |



Showerhead - Chrome

28 505 979 Product version from 10/1/2023

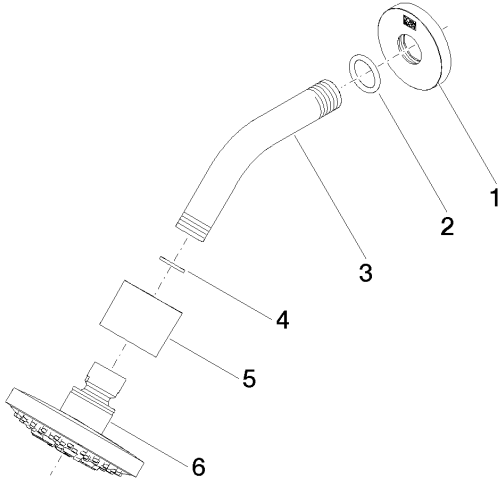
Certificates

IAPMO_4976

Showerhead - Chrome

28 505 979 Product version from 10/1/2023

Parts for other
finishes can be found
here: Brushed
Platinum



Spare parts list

| Number | Item Number | Designation | Number of units | Lead time |
|--------|--------------------|-------------|-----------------|-----------|
| 1 | 09 27 22 045-00 | rosette | 1 | 10 |
| 2 | 90 14 10 026 00 90 | seal | 1 | 2 |
| 3 | 09 11 03 011-00 | connection | 1 | 10 |
| 4 | 90 14 20 002 00 90 | seal | 1 | 2 |
| 5 | 09 11 01 191-00 | cover | 1 | 10 |
| 6 | 90 12 05 055 01-00 | shower | 1 | 10 |