

# Showerhead - Matte Black

28 505 979 Product version from 10/1/2023



- 6-1/8" Projection
- swivels 18°
- 3-way or 5-way adjustable: PURIFY RAIN, COMPACT SOFT FLOW, COMPACT AQUAPRESSURE FLOW, flow rate max. 1.8 gpm (at 3 bar)
- Descaling system
- Ø 3-7/8"
- Flange diameter 2-3/8"
- 1/2" connection
- Function from: 1.6 gpm
- This product can help a building meet the requirements of Green Building Rating Systems, e.g. LEED®, BREEAM®, DGNB

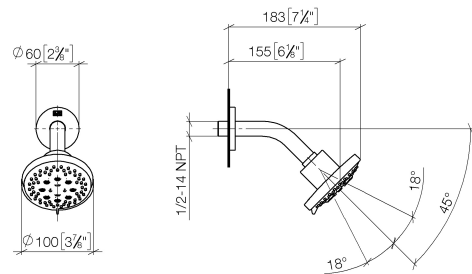
	Matte Black	28 505 979-33 0010
	Chrome	28 505 979-00 0010
	Brushed Platinum	28 505 979-06 0010
	Platinum	28 505 979-08 0010
	Dark Chrome	28 505 979-19 0010
	Light gold	28 505 979-26 0010
	Brushed Light Gold	28 505 979-27 0010
	Brushed Durabronze (23kt Gold)	28 505 979-28 0010
	Brushed Bronze	28 505 979-42 0010
	Brushed Champagne (22kt Gold)	28 505 979-46 0010
	Champagne (22kt Gold)	28 505 979-47 0010
	Brushed Chrome	28 505 979-93 0010
	Brushed Dark Platinum	28 505 979-99 0010



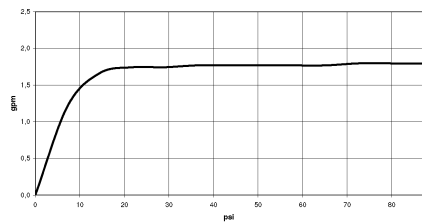
# Showerhead - Matte Black

28 505 979    Product version from 10/1/2023

mm [inches]



## Flow rate chart



## Codes & Standards

ASME A112.18.1	ASME A112.18.1/CSA B125.1	California Energy Commission (CEC)	cUPC
Water Sense			



## Showerhead - Matte Black

---

28 505 979 Product version from 10/1/2023

### Certificates

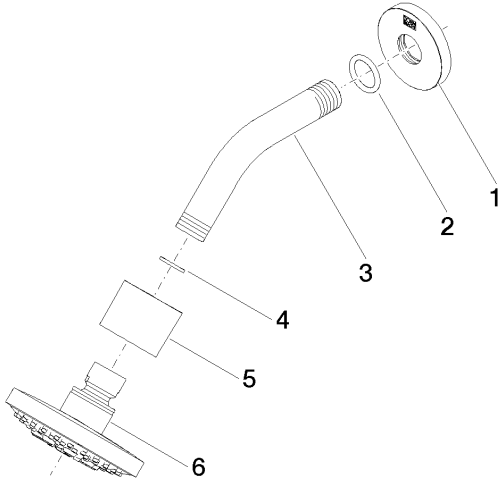
---

IAPMO\_4976

# Showerhead - Matte Black

28 505 979    Product version from 10/1/2023

Parts for other  
finishes can be found  
here: [Chrome](#)



## Spare parts list

Number	Item Number	Designation	Number of units	Lead time
1	09 27 22 045-33	rosette	1	30
2	90 14 10 026 00 90	seal	1	2
3	09 11 03 011-33	connection	1	30
4	90 14 20 002 00 90	seal	1	2
5	09 11 01 191-33	cover	1	30
6	90 12 05 055 01-33	shower	1	30