

Showerhead - Brushed Bronze

SERIES SPECIFIC

28 505 979 Product version from 10/1/2023



- Ø 3-7/8"
- 3-way or 5-way adjustable: COMPACT RAIN, COMPACT SOFT FLOW, COMPACT AQUAPRESSURE FLOW, flow rate max. 1.8 gpm (at 3 bar)
- Function from: 1.6 gpm
- Descaling system

Technical dimensions:

- 6-1/8" Projection
- swivels 18°
- Flange diameter 2-3/8"
- 1/2" connection

	Brushed Bronze	28 505 979-42 0010
	Chrome	28 505 979-00 0010
	Brushed Platinum	28 505 979-06 0010
	Platinum	28 505 979-08 0010
	Dark Chrome	28 505 979-19 0010
	Light gold	28 505 979-26 0010
	Brushed Light Gold	28 505 979-27 0010
	Brushed Durabronze (23kt Gold)	28 505 979-28 0010
	Matte Black	28 505 979-33 0010
	Brushed Champagne (22kt Gold)	28 505 979-46 0010
	Champagne (22kt Gold)	28 505 979-47 0010
	Brushed Chrome	28 505 979-93 0010
	Brushed Dark Platinum	28 505 979-99 0010

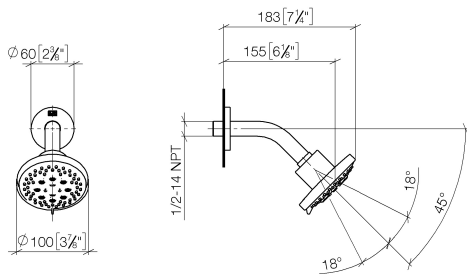


Showerhead - Brushed Bronze

SERIES SPECIFIC

28 505 979 Product version from 10/1/2023

mm [inches]



Codes & Standards

ASME A112.18.1 California Energy Commission (CEC) cUPC EPA WaterSense

WaterSense



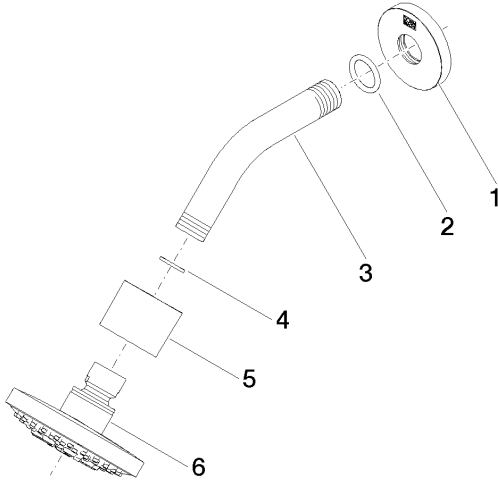
Certificates and sustainability

IAPMO_4976 IAPMO_11777

Parts for other

finishes can be found

here: [Chrome](#)



Spare parts list

Number	Item Number	Designation	Number of units	Lead time
1	09 27 22 045-42	rosette	1.00	60
4	90 14 20 002 00 90	seal	1.00	2
6	90 12 05 055 01-42	shower	1.00	30
3	09 11 03 011-42	connection	1.00	60
2	90 14 10 026 00 90	seal	1.00	2
5	09 11 01 191-42	cover	1.00	60