





LULU Showerhead FlowReduce - Chrome

28 508 710 Product version from 5/15/2020



- 7-7/8" Projection
- Ball-joint pivotable through 30°
- 3-way adjustable: PURIFY RAIN, COMPACT SOFT FLOW, COMPACT AQUAPRESSURE FLOW, flow rate max. 1.8 gpm (at 3 bar)
- Descaling system
- Ø 3-5/8"
- Flange 3-1/8" x 2-1/8"
- 1/2" connection
- Function from: 1.3 gpm
- This product reduces water consumption by 28% (compared to requirements of EPAct '92)
- This product contributes to meeting the requirements of the LEED® Green Building Rating
- This product can help a building meet the requirements of Green Building Rating Systems, e.g. LEED®, BREEAM®, DGNB

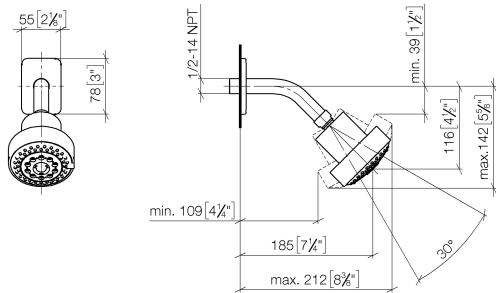
	Chrome	28 508 710-00 0010
	Brushed Platinum	28 508 710-06 0010



LULU Showerhead FlowReduce - Chrome

28 508 710 Product version from 5/15/2020

mm [inches]



Flow rate chart



Codes & Standards

ASME A112.18.1	ASME A112.18.1/CSA B125.1	California Energy Commission (CEC)	cUPC
DIN 4109	ISO 3822	Ü-Zeichen	Water Sense



LULU Showerhead FlowReduce - Chrome

28 508 710 Product version from 5/15/2020

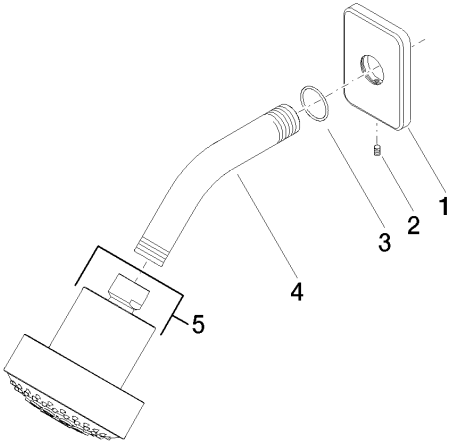
Certificates

LGA_38 IAPMO_4976

LULU Showerhead FlowReduce - Chrome

28 508 710 Product version from 5/15/2020

Parts for other
finishes can be found
here: Brushed
Platinum



Spare parts list

Number	Item Number	Designation	Number of units	Lead time
1	09 27 71 027-00	rosette	1	10
2	09 31 11 048 90	pin	1	2
3	09 14 10 098 90	seal	1	2
4	09 11 03 011-00	connection	1	10
5	04 12 11 110 30-00	shower	1	10