





# LULU Showerhead FlowReduce - Brushed Platinum

28 508 710    Product version from 5/15/2020



- 7-7/8" Projection
- Ball-joint pivotable through 30°
- 3-way adjustable: COMPACT RAIN, COMPACT SOFT FLOW, COMPACT AQUAPRESSURE FLOW, flow rate max. gpm (at 3 bar)
- Descaling system
- Ø 3-5/8"
- Flange 3-1/8" x 2-1/8"
- 1/2" connection
- Function from: 1.3 gpm
- This product reduces water consumption by 28% (compared to requirements of EPAct '92)
- This product contributes to meeting the requirements of the LEED® Green Building Rating
- This product can help a building meet the requirements of Green Building Rating Systems, e.g. LEED®, BREEAM®, DGNB

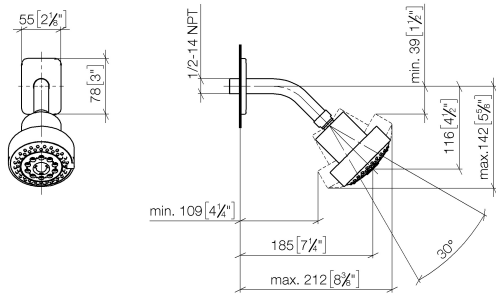
	Brushed Platinum	28 508 710-06 0010
	Chrome	28 508 710-00 0010



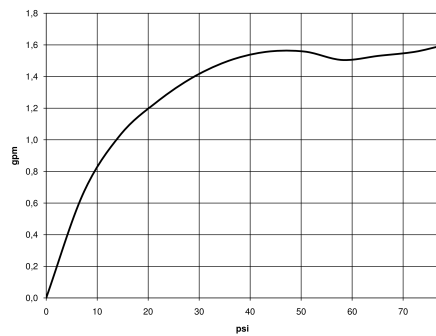
# LULU Showerhead FlowReduce - Brushed Platinum

28 508 710    Product version from 5/15/2020

mm [inches]



## Flow rate chart



## Codes & Standards

ASME A112.18.1	ASME A112.18.1/CSA B125.1	California Energy Commission (CEC)	cUPC
DIN 4109	EPA WaterSense	ISO 3822	Ü-Zeichen

Water Sense

WaterSense





# LULU Showerhead FlowReduce - Brushed Platinum

---

28 508 710    Product version from 5/15/2020

## Certificates

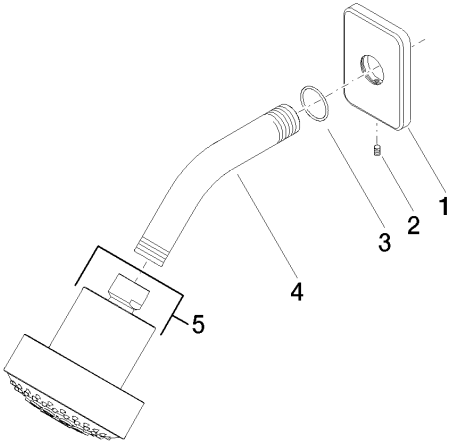
---

LGA_38	IAPMO_4976	IAPMO_11777
--------	------------	-------------

# LULU Showerhead FlowReduce - Brushed Platinum

28 508 710    Product version from 5/15/2020

Parts for other  
finishes can be found  
here: [Chrome](#)



## Spare parts list

Number	Item Number	Designation	Number of units	Lead time
1	09 27 71 027-06	rosette	1	10
2	09 31 11 048 90	pin	1	2
3	09 14 10 098 90	seal	1	2
4	09 11 03 011-06	connection	1	10
5	04 12 11 110 30-06	shower	1	10