

Showerhead FlowReduce - Dark Chrome

SERIES SPECIFIC

28 508 980 Product version from 5/15/2020

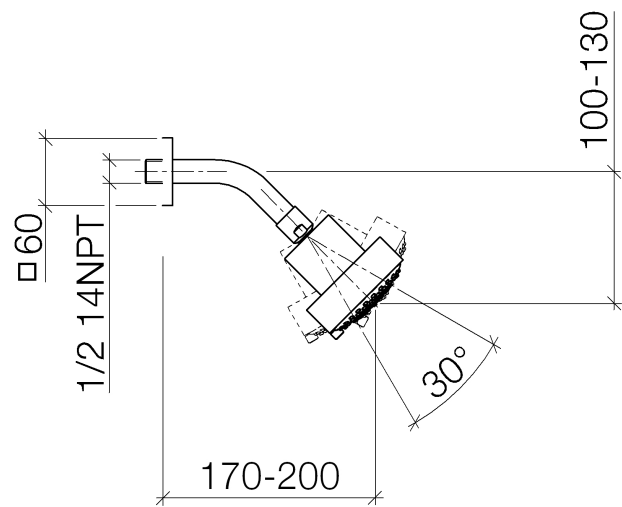


- Ø 3-5/8"
- 3-way adjustable: COMPACT RAIN, COMPACT SOFT FLOW, COMPACT AQUAPRESSURE FLOW, flow rate max. 1.8 gpm (at 3 bar)
- Function from: gpm
- Descaling system

Technical data:

- 7-7/8" Projection
- Ball-joint pivotable through 30°
- Flange 2-3/8" x 2-3/8"
- 1/2" connection

	Dark Chrome	28 508 980-19 0010
	Chrome	28 508 980-00 0010
	Brushed Platinum	28 508 980-06 0010
	Platinum	28 508 980-08 0010
	Brushed Light Gold	28 508 980-27 0010
	Brushed Durabrass (23kt Gold)	28 508 980-28 0010
	Matte Black	28 508 980-33 0010
	Brushed Champagne (22kt Gold)	28 508 980-46 0010
	Champagne (22kt Gold)	28 508 980-47 0010
	Brushed Chrome	28 508 980-93 0010
	Brushed Dark Platinum	28 508 980-99 0010

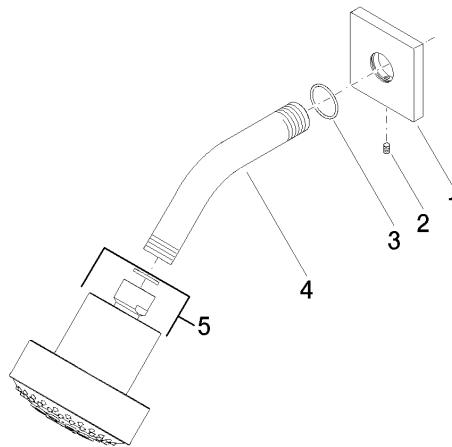


Codes & Standards				
ASME A112.18.1	California Energy Commission (CEC)	cUPC	DIN 4109	
EPA WaterSense	ISO 3822	Ü-Zeichen	WaterSense	

Certificates and sustainability			
LGA_38	IAPMO_4976	IAPMO_11777	

28 508 980 Product version from 5/15/2020

Parts for other
finishes can be found
here: [Chrome](#)



Spare parts list

Number	Item Number	Designation	Number of units	Lead time
4	09 11 03 011-19	connection	1.00	20
5	04 12 11 110 30-19	shower	1.00	-
Spare part can no longer be ordered, please order the replacement item				
1	09 27 98 003-19	rosette	1.00	60
3	09 14 10 098 90	seal	1.00	2
2	09 31 11 048 90	pin	1.00	2