

Showerhead FlowReduce - Brushed Champagne (22kt Gold)

SERIES SPECIFIC

28 508 980 Product version from 5/15/2020




- Ø 3-5/8"
- 3-way adjustable: COMPACT RAIN, COMPACT SOFT FLOW, COMPACT AQUAPRESSURE FLOW, flow rate max. 1.8 gpm (at 3 bar)
- Function from: gpm
- Descaling system

Technical data:

- 7-7/8" Projection
- Ball-joint pivotable through 30°
- Flange 2-3/8" x 2-3/8"
- 1/2" connection

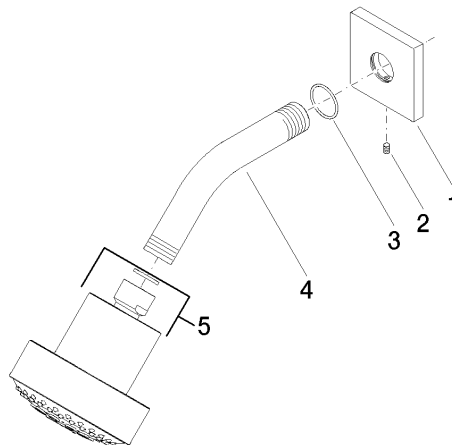
| | | |
|---|-------------------------------|--------------------|
|  | Brushed Champagne (22kt Gold) | 28 508 980-46 0010 |
|  | Chrome | 28 508 980-00 0010 |
|  | Brushed Platinum | 28 508 980-06 0010 |
|  | Platinum | 28 508 980-08 0010 |
|  | Dark Chrome | 28 508 980-19 0010 |
|  | Brushed Light Gold | 28 508 980-27 0010 |
|  | Brushed Durabrass (23kt Gold) | 28 508 980-28 0010 |
|  | Matte Black | 28 508 980-33 0010 |
|  | Champagne (22kt Gold) | 28 508 980-47 0010 |
|  | Brushed Chrome | 28 508 980-93 0010 |
|  | Brushed Dark Platinum | 28 508 980-99 0010 |



| Codes & Standards | | | | |
|-------------------|------------------------------------|-----------|------------|---|
| ASME A112.18.1 | California Energy Commission (CEC) | cUPC | DIN 4109 | |
| EPA WaterSense | ISO 3822 | Ü-Zeichen | WaterSense |  |

| Certificates and sustainability | | | |
|---------------------------------|------------|-------------|--|
| LGA_38 | IAPMO_4976 | IAPMO_11777 | |

Parts for other
finishes can be found
here: [Chrome](#)



Spare parts list

| Number | Item Number | Designation | Number of units | Lead time |
|--|--------------------|-------------|-----------------|-----------|
| 1 | 09 27 98 003-46 | rosette | 1.00 | 30 |
| 4 | 09 11 03 011-46 | connection | 1.00 | 30 |
| 5 | 04 12 11 110 30-46 | shower | 1.00 | - |
| Spare part can no longer be ordered, please order the replacement item | | | | |
| 3 | 09 14 10 098 90 | seal | 1.00 | 2 |
| 2 | 09 31 11 048 90 | pin | 1.00 | 2 |