

## Body spray without diverter FlowReduce - Matte Black

28 518 782 Product version from 3/10/2014



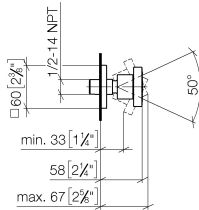
- Ø 2-1/8"
- swivels 25°
- Stream: Rain
- Descaling system
- Flange 2-3/8" x 2-3/8"
- 1/2" connection
- Water flow rate limited to max. 1.3 gpm
- This product can help a building meet the requirements of Green Building Rating Systems, e.g. LEED®, BREEAM®, DGNB

|  |                               |               |
|--|-------------------------------|---------------|
|   | Matte Black                   | 28 518 782-33 |
|   | Chrome                        | 28 518 782-00 |
|   | Brushed Platinum              | 28 518 782-06 |
|   | Platinum                      | 28 518 782-08 |
|   | Dark Chrome                   | 28 518 782-19 |
|   | Brushed Light Gold            | 28 518 782-27 |
|   | Brushed Durabrass (23kt Gold) | 28 518 782-28 |
|   | Brushed Champagne (22kt Gold) | 28 518 782-46 |
|   | Champagne (22kt Gold)         | 28 518 782-47 |
|   | Brushed Chrome                | 28 518 782-93 |
|  | Brushed Dark Platinum         | 28 518 782-99 |

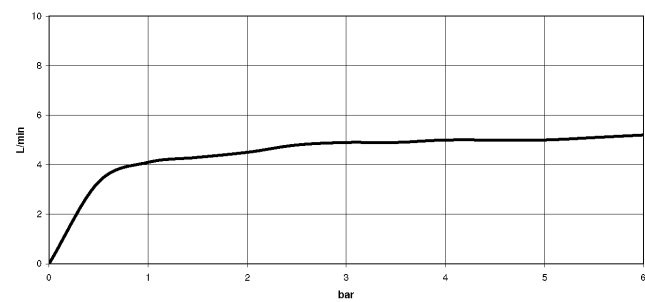
**Body spray without diverter FlowReduce - Matte Black**

28 518 782 Product version from 3/10/2014

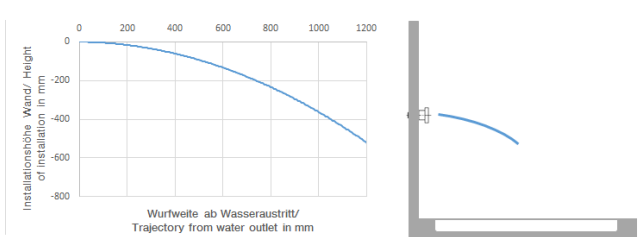
mm [inches]



**Flow rate chart**



**Trajectory length diagram**



**Codes & Standards**

|                |                           |                                    |                             |
|----------------|---------------------------|------------------------------------|-----------------------------|
| ASME A112.18.1 | ASME A112.18.1/CSA B125.1 | California Energy Commission (CEC) | cUPC                        |
| DIN 4109       | ISO 3822                  | Scottish Water Byelaws             | UK Water Supply Regulations |

Ü-Zeichen



## Body spray without diverter FlowReduce - Matte Black

---

28 518 782 Product version from 3/10/2014

### Certificates

---

LGA\_38

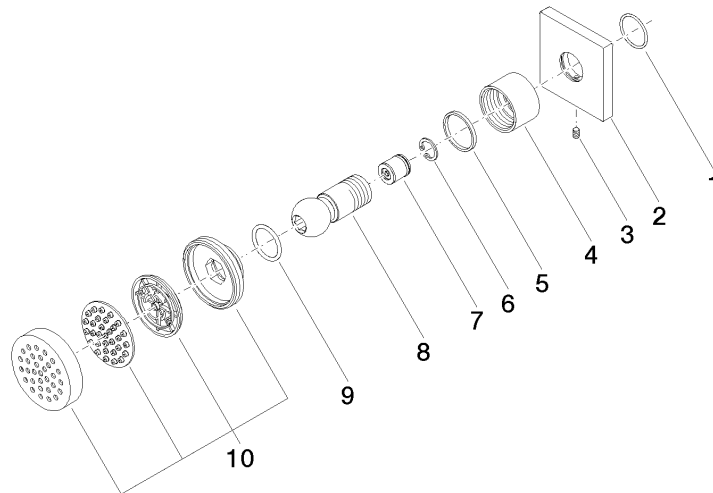
IAPMO\_4976

WRAS\_240602

## Body spray without diverter FlowReduce - Matte Black

28 518 782 Product version from 3/10/2014

Parts for other  
finishes can be found  
here: [Chrome](#)



### Spare parts list

| Number | Item Number        | Designation           | Number of units | Lead time |
|--------|--------------------|-----------------------|-----------------|-----------|
| 1      | 09 14 10 098 90    | seal                  | 1               | 2         |
| 2      | 09 27 98 003-33    | rosette               | 1               | 30        |
| 3      | 09 31 11 048 90    | pin                   | 1               | 2         |
| 4      | 09 23 30 026-33    | nut                   | 1               | 30        |
| 5      | 09 14 15 010 90    | ring                  | 1               | 2         |
| 6      | 09 16 01 014 90    | ring                  | 1               | 2         |
| 7      | 09 23 01 048 90    | back-flow preventer   | 1               | 2         |
| 8      | 09 21 40 016-33    | connection            | 1               | 30        |
| 9      | 09 14 10 015 90    | seal                  | 1               | 2         |
| 10     | 90 12 05 027 00-33 | casing ( completely ) | 1               | 30        |