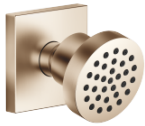


Body spray without diverter FlowReduce - Brushed Champagne (22kt Gold)

28 518 782 Product version from 3/10/2014



- Ø 2-1/8"
- swivels 25°
- Stream: Rain
- Descaling system
- Flange 2-3/8" x 2-3/8"
- 1/2" connection
- Water flow rate limited to max. 1.3 gpm
- This product can help a building meet the requirements of Green Building Rating Systems, e.g. LEED®, BREEAM®, DGNB

	Brushed Champagne (22kt Gold)	28 518 782-46
	Chrome	28 518 782-00
	Brushed Platinum	28 518 782-06
	Platinum	28 518 782-08
	Dark Chrome	28 518 782-19
	Brushed Light Gold	28 518 782-27
	Brushed Durabrass (23kt Gold)	28 518 782-28
	Matte Black	28 518 782-33
	Champagne (22kt Gold)	28 518 782-47
	Brushed Chrome	28 518 782-93
	Brushed Dark Platinum	28 518 782-99

Required article

Rough-in adapter -

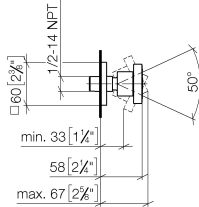
35 080 970-90
0010



Body spray without diverter FlowReduce - Brushed Champagne (22kt Gold)

28 518 782 Product version from 3/10/2014

mm [inches]



Flow rate chart



Trajectory length diagram



Codes & Standards

ASME A112.18.1	ASME A112.18.1/CSA B125.1	California Energy Commission (CEC)	cUPC
DIN 4109	ISO 3822	Scottish Water Byelaws	UK Water Supply Regulations

Ü-Zeichen



Body spray without diverter FlowReduce - Brushed Champagne (22kt Gold)

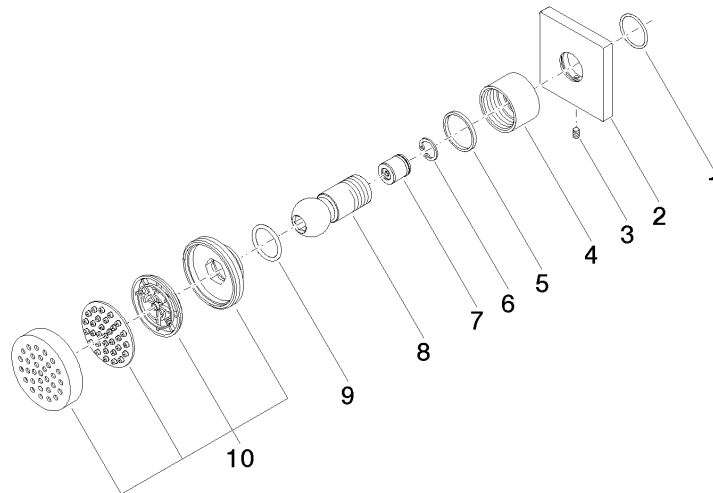
28 518 782 Product version from 3/10/2014

Certificates

LGA_38	IAPMO_4976	WRAS_240602
--------	------------	-------------

Body spray without diverter FlowReduce - Brushed Champagne (22kt Gold)

28 518 782 Product version from 3/10/2014



Spare parts list

Number	Item Number	Designation	Number of units	Lead time
1	09 14 10 098 90	seal	1	2
2	09 27 98 003-46	rosette	1	30
3	09 31 11 048 90	pin	1	2
4	09 23 30 026-46	nut	1	30
5	09 14 15 010 90	ring	1	2
6	09 16 01 014 90	ring	1	2
7	09 23 01 048 90	back-flow preventer	1	2
8	09 21 40 016-46	connection	1	30
9	09 14 10 015 90	seal	1	2
10	90 12 05 027 00-46	casing (completely)	1	30