

MADISON Rain shower ceiling-mounted 7-7/8" - Brushed Platinum

MADISON

28 565 977 Product version up to 12/5/2019





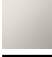




- Rain shower diameter 7-7/8"
- PURE RAIN, flow rate max. 1.8 gpm (at 3 bar)
- Descaling system

Technical data:

- 7-1/4" distance between ceiling and bottom of showerhead
- Flange diameter 2-1/8"
- 1/2" connection

Notes:

- This product reduces water consumption by 28% (compared to requirements of EPA Act '92)
- This product can help a building meet the requirements of Green Building Rating Systems, e.g. LEED®, BREEAM®, DGNB

	Brushed Platinum	28 565 977-06 0010
	Chrome	28 565 977-00 0010
	Platinum	28 565 977-08 0010
	Durabrand (23kt Gold)	28 565 977-09 0010
	Brushed Durabrand (23kt Gold)	28 565 977-28 0010
	Brushed Dark Brass	28 565 977-39 0010
	Brushed Dark Platinum	28 565 977-99 0010

Required article



Concealed wall elbow -

- Max. rough in depth 6-3/8"
- Min. rough in depth 3-1/2"

35 085 970-90
0010

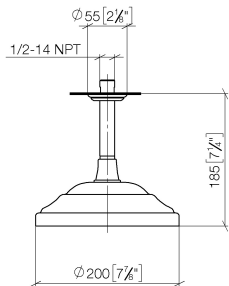


MADISON Rain shower ceiling-mounted 7-7/8" - Brushed Platinum

MADISON

28 565 977 Product version up to 12/5/2019

mm [inches]



Codes & Standards

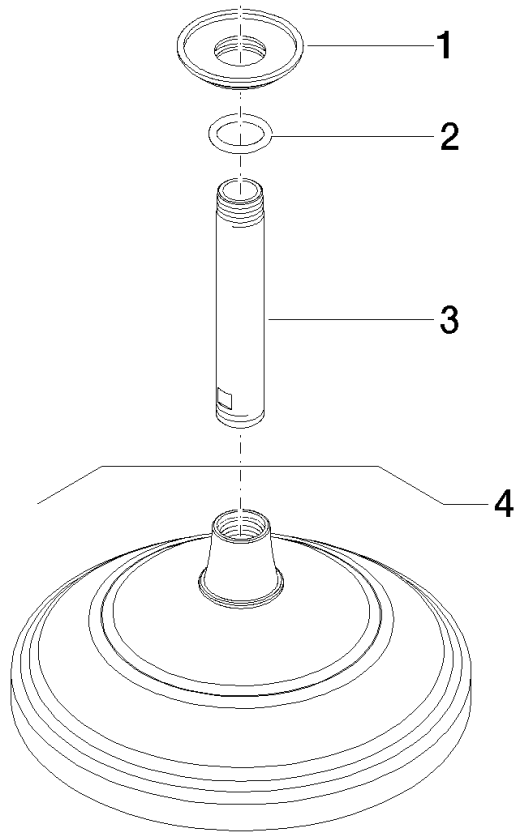
ASME A112.18.1	California Energy Commission (CEC)	cUPC	EPA WaterSense
----------------	------------------------------------	------	----------------

WaterSense



Certificates and sustainability

IAPMO_4976	IAPMO_11777
------------	-------------



Spare parts list

Number	Item Number	Designation	Number of units	Lead time
3	09 11 03 018-06	connection	1.00	10
1	09 27 35 003-06	rosette	1.00	10
4	28 535 977-06 0010	shower	1.00	-
Spare part can no longer be ordered, please order the replacement item				
2	90 14 10 026 00 90	seal	1.00	2