




# MADISON Rain shower ceiling-mounted 7-7/8" - Brushed Durabrass (23kt Gold)


28 565 977    Product version from 12/5/2019



- Rain shower diameter 7-7/8"
- PURE RAIN, flow rate max. 1.8 gpm (at 3 bar)
- 7-1/4" distance between ceiling and bottom of showerhead
- Flange diameter 2-1/8"
- 1/2" connection
- Descaling system
- This product reduces water consumption by 28% (compared to requirements of EPAct '92)
- This product can help a building meet the requirements of Green Building Rating Systems, e.g. LEED®, BREEAM®, DGNB

	Brushed Durabrass (23kt Gold)	28 565 977-28 0010
	Chrome	28 565 977-00 0010
	Brushed Platinum	28 565 977-06 0010
	Platinum	28 565 977-08 0010
	Durabrass (23kt Gold)	28 565 977-09 0010
	Brushed Dark Platinum	28 565 977-99 0010

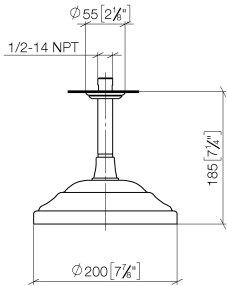
## Required article

	<b>Concealed wall elbow -</b> •Max. rough in depth " •Min. rough in depth "	35 085 970-90 0010
---	---	--------------------

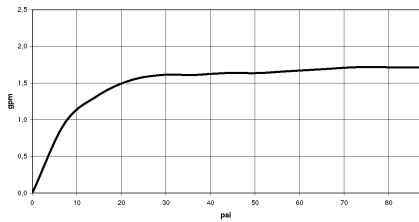


# MADISON Rain shower ceiling-mounted 7-7/8" - Brushed Durabron (23kt Gold)

28 565 977    Product version from 12/5/2019  
mm [inches]



## Flow rate chart

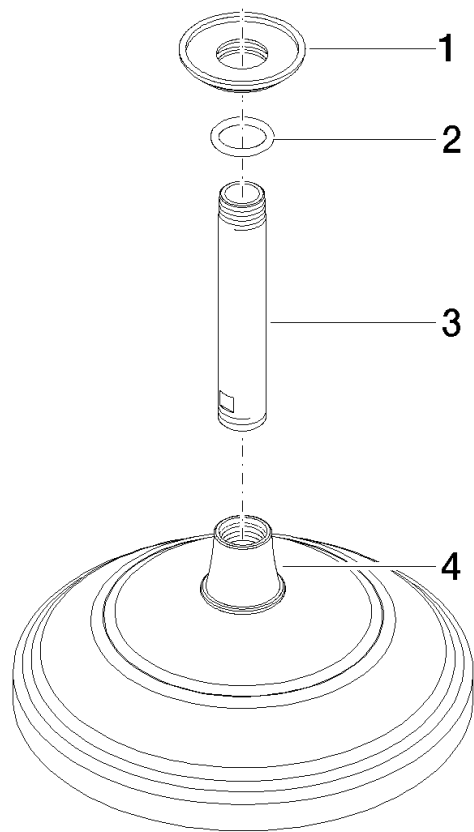


## Codes & Standards

ASME	California Energy
A112.18.1/CSA	Commission
B125.1	(CEC)

MADISON Rain shower ceiling-mounted 7-7/8" - Brushed Durabronz (23kt Gold)

28 565 977
Product version from 12/5/2019



Spare parts list

Number	Item Number	Designation	Number of units	Lead time
1	09 27 35 003-28	rosette	1	60
2	90 14 10 026 00 90	seal	1	2
3	09 11 03 018-28	connection	1	60
4	04 12 05 038 30-28	shower	1	20