



SERIES SPECIFIC Rain shower wall-mounted 8-5/8" - Brushed Dark Platinum

SERIES SPECIFIC

28 645 670 Product version from 4/1/2025










- Rain shower diameter 8-5/8"
- Material rain shower: plastic
- PURE RAIN, flow rate max. 1.8 gpm (at 3 bar)
- Function from: 1.6 gpm
- with drip prevention
- Descaling system

Technical dimensions:

- 17-3/4" Projection
- Flange 2-1/2" x 2-1/2"
- 1/2" connection

Notes:

- This product can help a building meet the requirements of Green Building Rating Systems, e.g. LEED®, BREEAM®, DGNB

	Brushed Dark Platinum	28 645 670-99 0010
	Chrome	28 645 670-00 0010
	Dark Chrome	28 645 670-19 0010
	Light gold	28 645 670-26 0010
	Brushed Light Gold	28 645 670-27 0010
	Brushed Bronze	28 645 670-42 0010
	Brushed Chrome	28 645 670-93 0010



SERIES SPECIFIC Rain shower wall-mounted 8-5/8" - Brushed Dark Platinum SERIES SPECIFIC

28 645 670 Product version from 4/1/2025

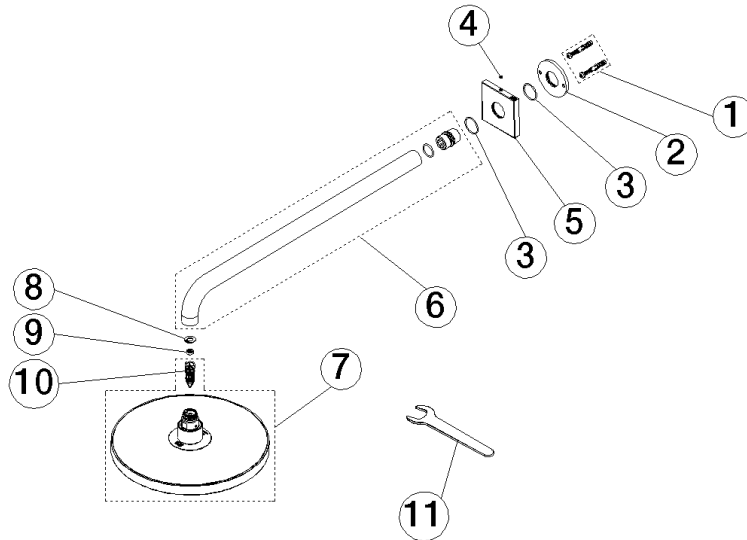
mm [inches]



SERIES SPECIFIC Rain shower wall-mounted 8-5/8" - Brushed Dark Platinum SERIES SPECIFIC

28 645 670 Product version from 4/1/2025

Parts for other finishes can be found here: [Chrome](#)



Spare parts list

Number	Item Number	Designation	Number of units	Lead time
8	09 16 01 014 90	ring	1.00	2
7	90 12 05 097 00-99	shower	1.00	-
Spare part can no longer be ordered, please order the replacement item				
6	90 11 03 070 00-99	pipe	1.00	20
9	90 23 01 102 00 90	flow reducer	1.00	2
1	04 30 31 032 00 90	fixing set	1.00	2
11	90 30 09 069 00 90	key	1.00	2
4	90 31 11 038 00 90	pin	1.00	2
2	09 17 20 120 90	holder	1.00	2
5	09 27 67 015-99	rosette	1.00	20
3	09 14 10 150 90	seal	2.00	2
10	90 18 40 278 00 90	insert	1.00	2