

## Rain shower wall-mounted 8-5/8" - Brushed Platinum

SERIES SPECIFIC

28 649 970 Product version from 3/13/2017



- 17-3/4" Projection
- PURE RAIN, flow rate max. 1.8 gpm (at 3 bar)
- Function from: 1.6 gpm
- Descaling system
- Rain shower diameter 8-5/8"
- Flange diameter 2-3/8"
- 1/2" connection
- with drip prevention
- This product reduces water consumption by 28% (compared to requirements of EPA Act '92)
- This product contributes to meeting the requirements of the LEED® Green Building Rating
- This product can help a building meet the requirements of Green Building Rating Systems, e.g. LEED®, BREEAM®, DGNB

|   |                               |                    |
|---|-------------------------------|--------------------|
|    | Brushed Platinum              | 28 649 970-06 0010 |
|    | Chrome                        | 28 649 970-00 0010 |
|    | Platinum                      | 28 649 970-08 0010 |
|    | Dark Chrome                   | 28 649 970-19 0010 |
|    | Light gold                    | 28 649 970-26 0010 |
|    | Brushed Light Gold            | 28 649 970-27 0010 |
|    | Brushed Durabrass (23kt Gold) | 28 649 970-28 0010 |
|    | Matte Black                   | 28 649 970-33 0010 |
|    | Brushed Bronze                | 28 649 970-42 0010 |
|   | Brushed Champagne (22kt Gold) | 28 649 970-46 0010 |
|  | Champagne (22kt Gold)         | 28 649 970-47 0010 |
|  | Brushed Chrome                | 28 649 970-93 0010 |
|  | Brushed Dark Platinum         | 28 649 970-99 0010 |

### Required article



- Concealed wall elbow -** 35 085 970-90 0010
- Max. rough in depth 6-3/8"
  - Min. rough in depth 3-1/2"

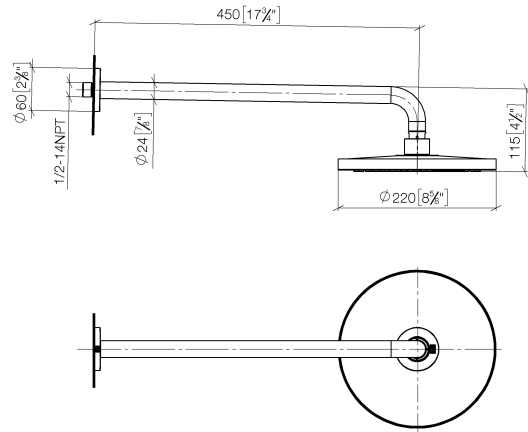


Rain shower wall-mounted 8-5/8" - Brushed Platinum

SERIES SPECIFIC

28 649 970    Product version from 3/13/2017

mm [inches]



Codes & Standards

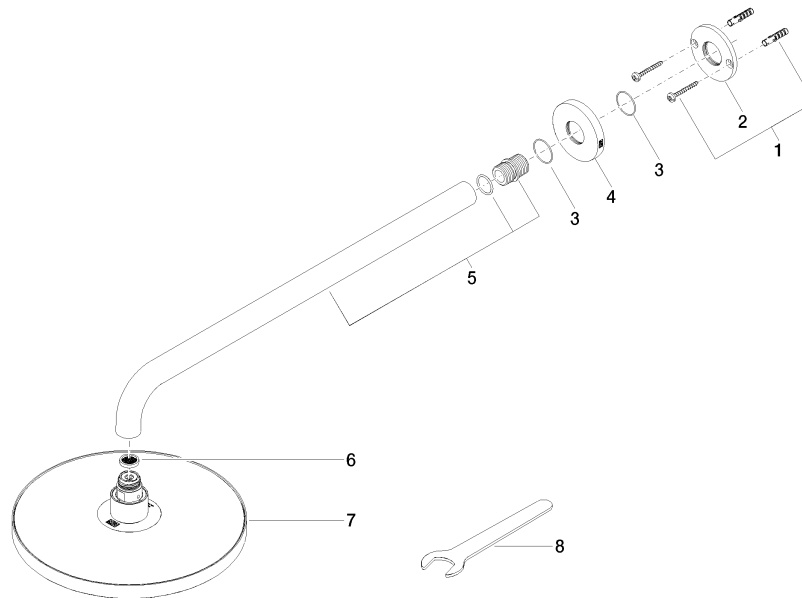
|                |                                    |      |                |
|----------------|------------------------------------|------|----------------|
| ASME A112.18.1 | California Energy Commission (CEC) | cUPC | EPA WaterSense |
|----------------|------------------------------------|------|----------------|

WaterSense



Certificates and sustainability

|            |             |
|------------|-------------|
| IAPMO_4976 | IAPMO_11777 |
|------------|-------------|



## Spare parts list

| Number | Item Number        | Designation | Number of units | Lead time |
|--------|--------------------|-------------|-----------------|-----------|
| 6      | 09 23 01 075 90    | insert      | 1.00            | 2         |
| 3      | 09 14 10 150 90    | seal        | 2.00            | 2         |
| 5      | 90 11 03 070 00-06 | pipe        | 1.00            | 10        |
| 1      | 04 30 31 032 00 90 | fixing set  | 1.00            | 2         |
| 4      | 09 27 97 015-06    | rosette     | 1.00            | 10        |
| 7      | 04 12 05 092 10-06 | shower      | 1.00            | 10        |
| 2      | 09 17 20 120 90    | holder      | 1.00            | 2         |
| 8      | 90 30 09 069 00 90 | key         | 1.00            | 2         |