

Rain shower ceiling-mounted 8-5/8" - Chrome

28 669 970 Product version from 3/13/2017



- PURE RAIN, flow rate max. 1.8 gpm (at 3 bar)
- Descaling system
- Rain shower diameter 8-5/8"
- Optional flange Ø 2-3/8" included
- 1/2" connection
- Function from: 1.6 gpm
- with drip prevention
- This product reduces water consumption by 28% (compared to requirements of EPA '92)
- This product contributes to meeting the requirements of the LEED® Green Building Rating
- This product can help a building meet the requirements of Green Building Rating Systems, e.g. LEED®, BREEAM®, DGNB

| | | |
|---|-------------------------------|--------------------|
|  | Chrome | 28 669 970-00 0010 |
|  | Brushed Platinum | 28 669 970-06 0010 |
|  | Platinum | 28 669 970-08 0010 |
|  | Dark Chrome | 28 669 970-19 0010 |
|  | Light gold | 28 669 970-26 0010 |
|  | Brushed Light Gold | 28 669 970-27 0010 |
|  | Brushed Durabrass (23kt Gold) | 28 669 970-28 0010 |
|  | Matte Black | 28 669 970-33 0010 |
|  | Brushed Bronze | 28 669 970-42 0010 |
|  | Brushed Champagne (22kt Gold) | 28 669 970-46 0010 |
|  | Champagne (22kt Gold) | 28 669 970-47 0010 |
|  | Brushed Chrome | 28 669 970-93 0010 |
|  | Brushed Dark Platinum | 28 669 970-99 0010 |

Required article



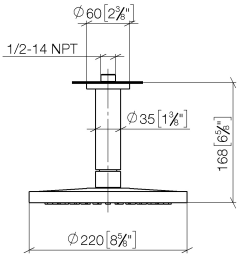
- Concealed wall elbow -** 35 085 970-90 0010
- Max. rough in depth "
 - Min. rough in depth "



Rain shower ceiling-mounted 8-5/8" - Chrome

28 669 970 Product version from 3/13/2017

mm [inches]



Flow rate chart



Codes & Standards

| | | | |
|----------------|---------------------------------|--|------|
| ASME A112.18.1 | ASME A112.18.1/CSA B125.1 | California Energy Commission (CEC) | cUPC |
|----------------|---------------------------------|--|------|

Water Sense



Rain shower ceiling-mounted 8-5/8" - Chrome

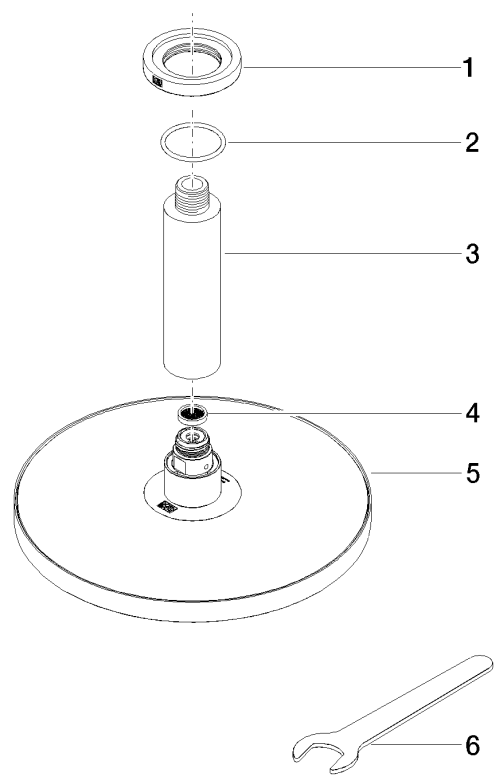
28 669 970 Product version from 3/13/2017

Certificates

IAPMO_4976

Rain shower ceiling-mounted 8-5/8" - Chrome

28 669 970 Product version from 3/13/2017



Spare parts list

| Number | Item Number | Designation | Number of units | Lead time |
|--------|--------------------|-------------|-----------------|-----------|
| 1 | 09 27 22 040-00 | rosette | 1 | 10 |
| 2 | 09 14 10 141 90 | seal | 1 | 2 |
| 3 | 09 11 03 080-00 | connection | 1 | 10 |
| 4 | 09 23 01 075 90 | insert | 1 | 2 |
| 5 | 04 12 05 092 10-00 | shower | 1 | 10 |
| 6 | 90 30 09 069 00 90 | key | 1 | 2 |