

Rain shower wall-mounted 11-3/4" - Brushed Dark Platinum

SERIES SPECIFIC

28 679 970 Product version from 3/13/2017



- 17-3/4" Projection
- PURE RAIN, flow rate max. 1.8 gpm (at 3 bar)
- Function from: 1.7 gpm
- Descaling system
- Rain shower diameter 11-3/4"
- Flange diameter 2-3/8"
- 1/2" connection
- with drip prevention
- This product reduces water consumption by 28% (compared to requirements of EPAAct '92)
- This product contributes to meeting the requirements of the LEED® Green Building Rating
- This product can help a building meet the requirements of Green Building Rating Systems, e.g. LEED®, BREEAM®, DGNB

	Brushed Dark Platinum	28 679 970-99 0010
	Chrome	28 679 970-00 0010
	Brushed Platinum	28 679 970-06 0010
	Platinum	28 679 970-08 0010
	Dark Chrome	28 679 970-19 0010
	Light gold	28 679 970-26 0010
	Brushed Light Gold	28 679 970-27 0010
	Brushed Durabrass (23kt Gold)	28 679 970-28 0010
	Matte Black	28 679 970-33 0010
	Brushed Dark Brass	28 679 970-39 0010
	Brushed Bronze	28 679 970-42 0010
	Brushed Champagne (22kt Gold)	28 679 970-46 0010
	Champagne (22kt Gold)	28 679 970-47 0010
	Brushed Chrome	28 679 970-93 0010

Required article



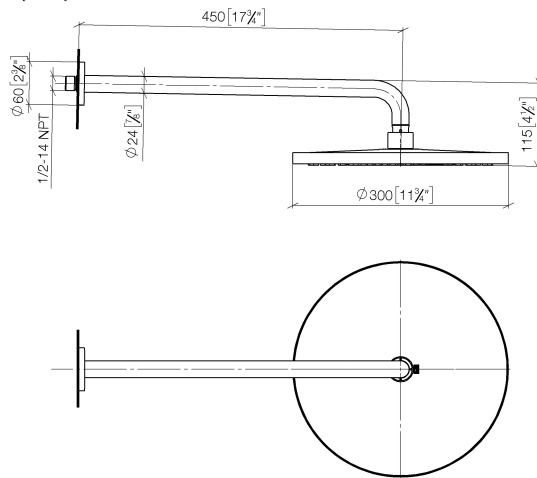
- Concealed wall elbow -** 35 085 970-90
- Max. rough in depth 6-3/8" 0010
 - Min. rough in depth 3-1/2"

Rain shower wall-mounted 11-3/4" - Brushed Dark Platinum

SERIES SPECIFIC

28 679 970 Product version from 3/13/2017

mm [inches]



Codes & Standards

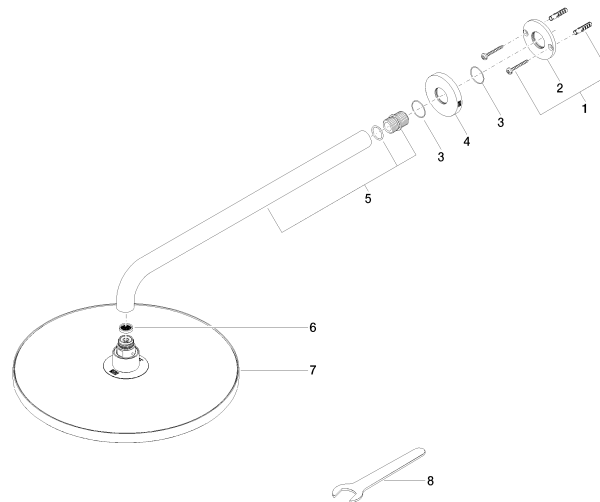
ASME A112.18.1	California Energy Commission (CEC)	cUPC	EPA WaterSense
----------------	------------------------------------	------	----------------

WaterSense



Certificates and sustainability

IAPMO_4976 IAPMO_11777



Spare parts list

Number	Item Number	Designation	Number of units	Lead time
2	09 17 20 120 90	holder	1.00	2
3	09 14 10 150 90	seal	2.00	2
1	04 30 31 032 00 90	fixing set	1.00	2
4	09 27 97 015-99	rosette	1.00	20
6	09 23 01 075 90	insert	1.00	2
7	04 12 05 091 10-99	shower	1.00	20
5	90 11 03 070 00-99	pipe	1.00	20
8	90 30 09 069 00 90	key	1.00	2