

Rain shower wall-mounted 11-3/4" x 9-1/2" - Brushed Chrome

SERIES SPECIFIC

28 765 980 Product version from 3/13/2017



- 17-3/4" Projection
- PURE RAIN, flow rate max. 1.8 gpm (at 3 bar)
- Function from: 1.6 gpm
- Descaling system
- 11-3/4" x 9-1/2" Rain showerhead
- Flange 2-3/8" x 2-3/8"
- 1/2" connection
- with drip prevention
- This product reduces water consumption by 28% (compared to requirements of EPA Act '92)
- This product contributes to meeting the requirements of the LEED® Green Building Rating
- This product can help a building meet the requirements of Green Building Rating Systems, e.g. LEED®, BREEAM®, DGNB

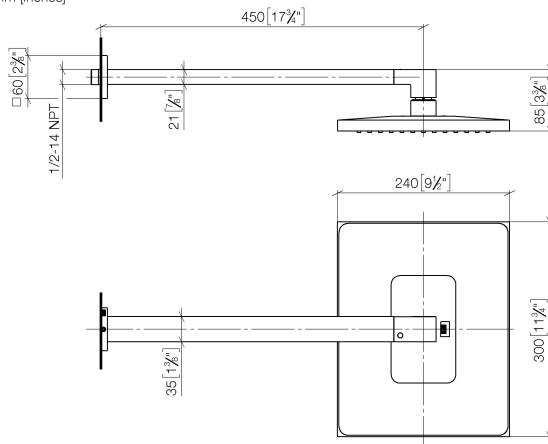
	Brushed Chrome	28 765 980-93 0010
	Chrome	28 765 980-00 0010
	Brushed Platinum	28 765 980-06 0010
	Platinum	28 765 980-08 0010
	Dark Chrome	28 765 980-19 0010
	Brushed Light Gold	28 765 980-27 0010
	Brushed Durabrass (23kt Gold)	28 765 980-28 0010
	Matte Black	28 765 980-33 0010
	Brushed Champagne (22kt Gold)	28 765 980-46 0010
	Champagne (22kt Gold)	28 765 980-47 0010
	Brushed Dark Platinum	28 765 980-99 0010

Rain shower wall-mounted 11-3/4" x 9-1/2" - Brushed Chrome

SERIES SPECIFIC

28 765 980 Product version from 3/13/2017

mm [inches]



Codes & Standards

ASME A112.18.1	California Energy Commission (CEC)	cUPC	EPA WaterSense
----------------	--	------	----------------

WaterSense



Certificates and sustainability

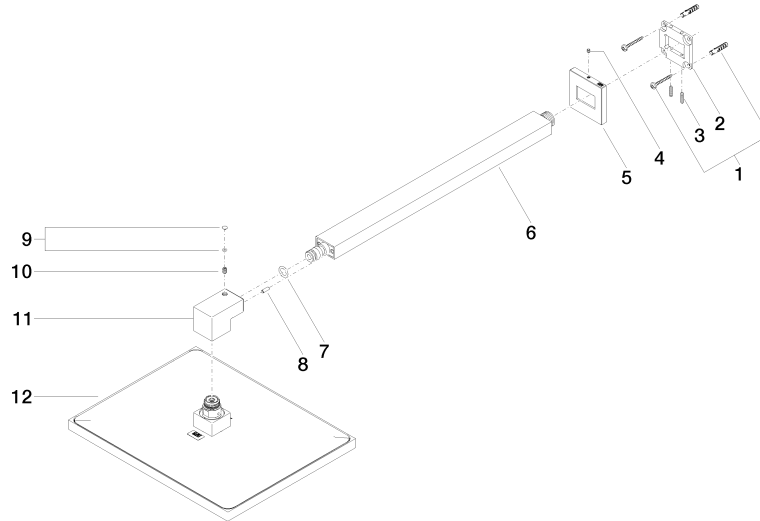
IAPMO_4976 IAPMO_11777

Rain shower wall-mounted 11-3/4" x 9-1/2" - Brushed Chrome

SERIES SPECIFIC

28 765 980 Product version from 3/13/2017

Parts for other
finishes can be found
here: [Chrome](#)



Spare parts list

Number	Item Number	Designation	Number of units	Lead time
10	09 31 11 036 90	pin	1.00	2
2	09 30 11 160 90	disc	1.00	2
6	04 28 22 249 00-93	pipe	1.00	20
11	09 17 01 180-93	connection	1.00	20
9	90 31 20 087 00-93	plug	1.00	20
1	04 30 31 032 00 90	fixing set	1.00	2
8	09 31 11 040 90	pin	1.00	2
5	09 27 98 016-93	rosette	1.00	20
3	09 31 11 084 90	pin	2.00	2
4	09 31 11 099 90	pin	1.00	2
12	04 12 05 063 10-93	shower	1.00	20
7	90 14 10 011 00 90	seal	1.00	2