





LULU Rain shower wall-mounted 11-3/4" x 9-1/2" - Chrome

LULU

28 786 710 Product version from 3/13/2017



- 17-3/4" Projection
- PURE RAIN, flow rate max. 1.8 gpm (at 3 bar)
- Function from: 1.6 gpm
- Descaling system
- 11-3/4" x 9-1/2" Rain showerhead
- Flange 3-1/8" x 2-3/8"
- 1/2" connection
- with drip prevention
- This product reduces water consumption by 28% (compared to requirements of EPAct '92)
- This product contributes to meeting the requirements of the LEED® Green Building Rating
- This product can help a building meet the requirements of Green Building Rating Systems, e.g. LEED®, BREEAM®, DGNB

	Chrome	28 786 710-00 0010
	Brushed Platinum	28 786 710-06 0010

Required article

	Concealed wall elbow - <ul style="list-style-type: none">•Max. rough in depth 6-3/8"•Min. rough in depth 3-1/2"	35 085 970-90 0010
---	---	--------------------

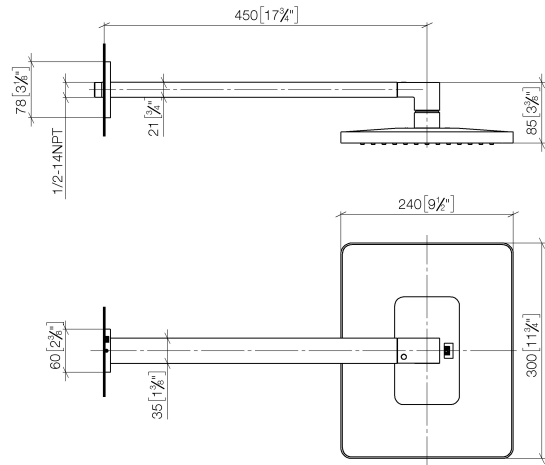


LULU Rain shower wall-mounted 11-3/4" x 9-1/2" - Chrome

LULU

28 786 710 Product version from 3/13/2017

mm [inches]



Codes & Standards

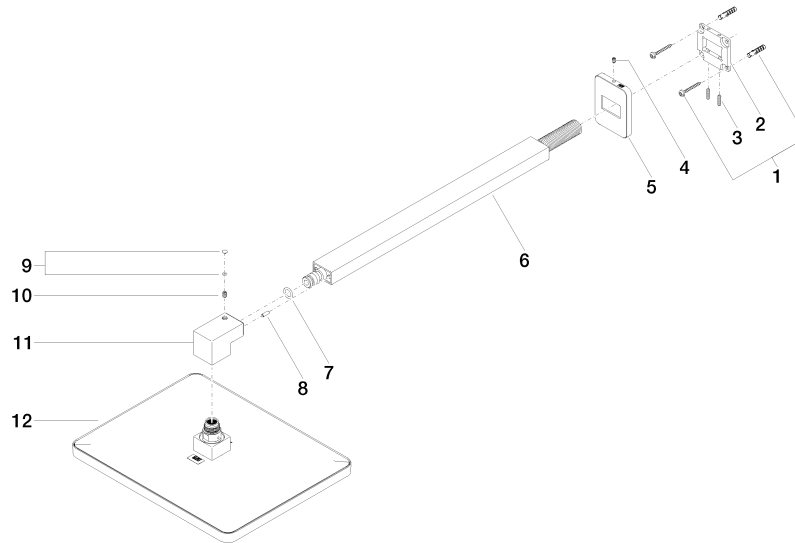
ASME A112.18.1 California Energy Commission (CEC) cUPC EPA WaterSense

WaterSense



Certificates and sustainability

IAPMO_4976 IAPMO_11777



Spare parts list

Number	Item Number	Designation	Number of units	Lead time
12	04 12 05 062 10-00	shower	1.00	10
11	09 17 01 180-00	connection	1.00	10
6	04 28 22 247 20-00	pipe	1.00	10
8	09 31 11 040 90	pin	1.00	2
10	09 31 11 036 90	pin	1.00	2
5	09 27 71 019-00	rosette	1.00	10
9	90 31 20 087 00-00	plug	1.00	10
4	09 31 11 048 90	pin	1.00	2
3	09 31 11 084 90	pin	2.00	2
2	09 30 11 160 90	disc	1.00	2
1	04 30 31 032 00 90	fixing set	1.00	2
7	90 14 10 011 00 90	seal	1.00	2