





LULU Rain shower ceiling-mounted 11-3/4" x 9-1/2" - Chrome

LULU


28 796 710 Product version from 3/13/2017



- PURE RAIN, flow rate max. 1.8 gpm (at 3 bar)
- Function from: 1.6 gpm
- Descaling system
- 11-3/4" x 9-1/2" Rain showerhead
- 6-1/2" distance between ceiling and bottom of showerhead
- Flange 3-1/8 x 2-1/8
- 1/2" connection
- with drip prevention
- This product reduces water consumption by 28% (compared to requirements of EPA '92)
- This product contributes to meeting the requirements of the LEED® Green Building Rating
- This product can help a building meet the requirements of Green Building Rating Systems, e.g. LEED®, BREEAM®, DGNB

	Chrome	28 796 710-00 0010
	Brushed Platinum	28 796 710-06 0010

Required article

	Concealed wall elbow - <ul style="list-style-type: none">•Max. rough in depth 6-3/8"•Min. rough in depth 3-1/2"	35 085 970-90 0010
---	---	--------------------

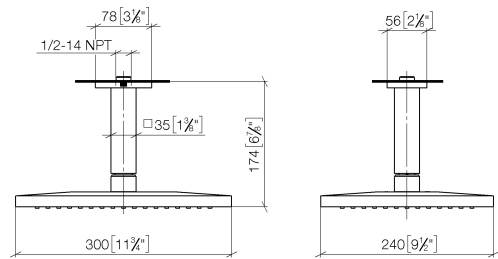


LULU Rain shower ceiling-mounted 11-3/4" x 9-1/2" - Chrome


LULU

28 796 710 Product version from 3/13/2017

mm [inches]

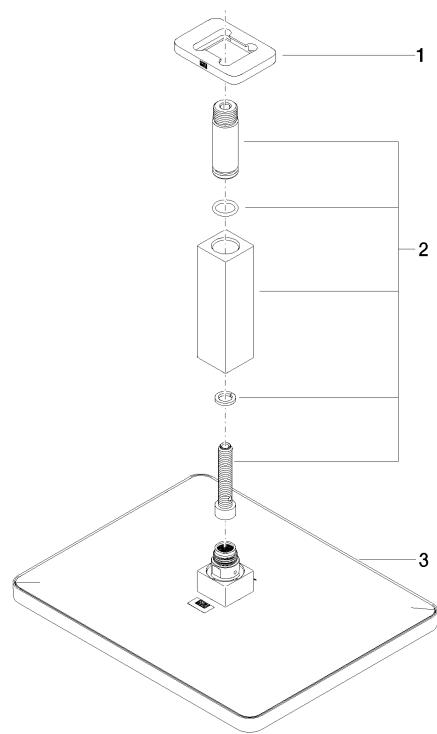


Codes & Standards

ASME A112.18.1	California Energy Commission (CEC)	cUPC	EPA WaterSense
WaterSense			

Certificates and sustainability

IAPMO_4976 IAPMO_11777



Spare parts list

Number	Item Number	Designation	Number of units	Lead time
2	90 11 10 092 00-00	connection	1.00	10
3	04 12 05 062 10-00	shower	1.00	10
1	09 27 71 020-00	rosette	1.00	10