

## Two-way diverter - Platinum

---

29 126 740



- Manual diverter
- 1-1/2" hole diameter
- Without flange
- Handle Ø 2-3/8"
- 1/2" connection
- Water flow rate limited to max. 6.2 gpm

Not suitable for use in combination with Perfecto  
(12 970 614 90).

### Recommended article

---



**Hose set -**

12 509 970-90

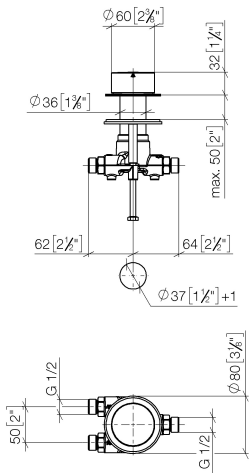
- ATTENTION: Hose set needed for the combination of 2 outlets

0010

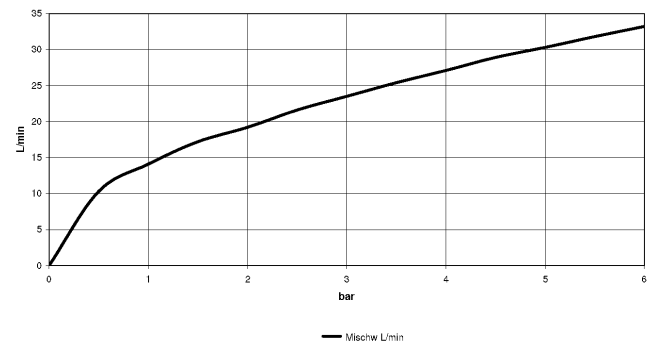
# Two-way diverter - Platinum

29 126 740

mm [inches]



## Flow rate chart



## Codes & Standards

ASME  
A112.18.1/CSA  
B125.1

California Energy  
Commission  
(CEC)

DIN 4109

ISO 3822

Ü-Zeichen



## Two-way diverter - Platinum

---

29 126 740

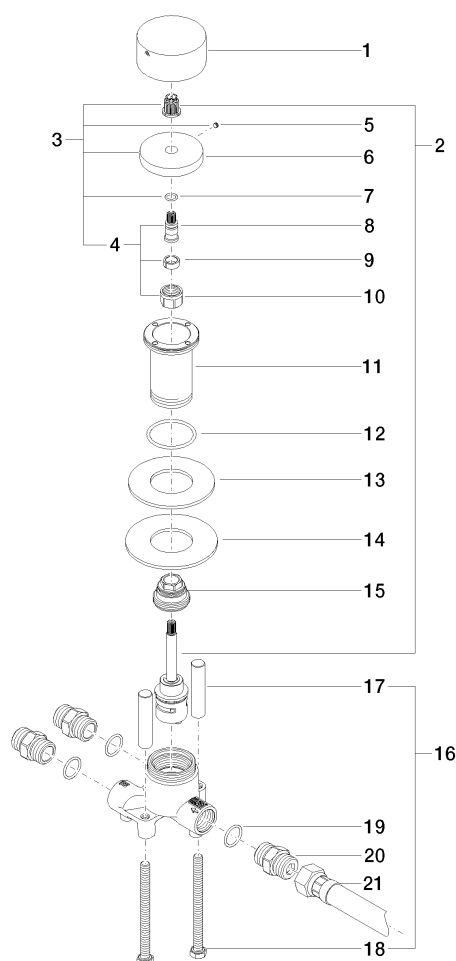
### Certificates

---

LGA\_18

## Two-way diverter - Platinum

29 126 740



### Spare parts list

Number	Item Number	Designation	Number of units	Lead time
1	09 20 74 007-08	handle	1	60
2	90 90 03 161 00 90	diverter	1	10
3	04 27 74 002 00-08	rosette	1	60
4	04 29 06 020 00-00	spindle	1	10
5	09 31 11 055 90	pin	1	2
6	09 27 74 002-08	rosette	1	60
7	90 14 10 060 00 90	seal	1	2
8	09 29 06 020-08	spindle	1	40
9	90 14 15 020 03 90	ring	1	2
10	90 23 30 023 00 90	nut	1	2
11	09 30 01 105 90	sleeve	1	2
12	09 14 10 143 90	seal	1	2
13	09 14 05 059 90	seal	1	2
14	09 30 11 136 90	disc	1	2
15	09 24 04 223 90	nipple	1	2
16	04 30 30 153 00 90	fixing set	1	2
17	09 18 40 114 90	sleeve	2	2
18	09 30 30 153 90	screw	2	2
19	90 14 10 010 00 90	seal	3	2
20	90 24 03 168 00 90	nipple	3	2
21	12 503 970 90	Flexible supply line 1/2" x 1/2" x 23-5/8" -	1	2