

META Two-way diverter for deck-mounted tub installation - Dark Chrome

29 140 660
Product version from 7/1/2023

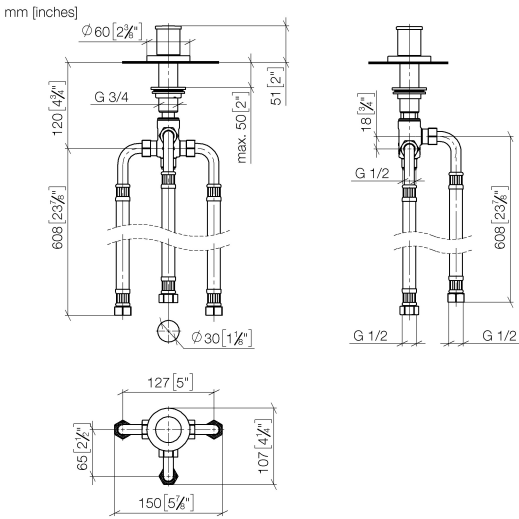


- Integrated diverter
- 1-1/4" hole diameter
- Flange diameter 2-3/8"
- 1/2" connection
- Water flow rate limited to max. 17.1 gpm

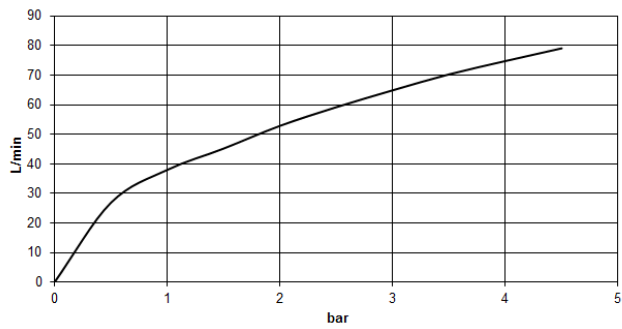
	Dark Chrome	29 140 660-19
	Chrome	29 140 660-00
	Brushed Platinum	29 140 660-06
	Light gold	29 140 660-26
	Brushed Light Gold	29 140 660-27
	Matte Black	29 140 660-33
	Brushed Bronze	29 140 660-42
	Brushed Champagne (22kt Gold)	29 140 660-46
	Champagne (22kt Gold)	29 140 660-47
	Brushed Chrome	29 140 660-93
	Brushed Dark Platinum	29 140 660-99

META Two-way diverter for deck-mounted tub installation - Dark Chrome

29 140 660 Product version from 7/1/2023



Flow rate chart



Codes & Standards

ASME A112.18.1	ASME A112.18.1/CSA B125.1	California Energy Commission (CEC)	cUPC
DIN 4109	ISO 3822	Ü-Zeichen	



META Two-way diverter for deck-mounted tub installation - Dark Chrome

29 140 660 Product version from 7/1/2023

Certificates

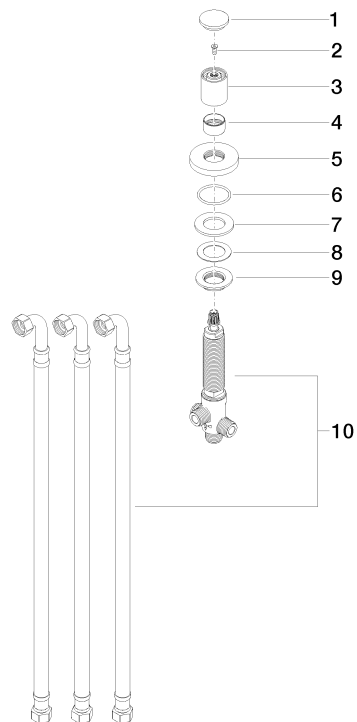
LGA_29

IAPMO_4976

META Two-way diverter for deck-mounted tub installation - Dark Chrome

29 140 660 Product version from 7/1/2023

Parts for other
finishes can be found
here: [Chrome](#)



Spare parts list

Number	Item Number	Designation	Number of units	Lead time
1	09 20 71 003-19	handle	1	20
2	90 30 30 014 00 90	screw	1	2
3	09 20 71 002-19	handle	1	20
4	09 16 01 012-19	ring	1	20
5	09 27 66 004-19	rosette	1	20
6	09 14 10 030 90	seal	1	2
7	09 14 05 014 90	seal	1	2
8	09 14 40 002 90	seal	1	2
9	09 23 10 004 90	nut	1	2
10	90 17 09 051 00 90	diverter	1	2