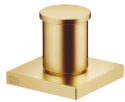




Two-way diverter for deck-mounted tub installation - Brushed Durabrass (23kt Gold)

SERIES SPECIFIC

29 140 670    Product version from 6/30/2015

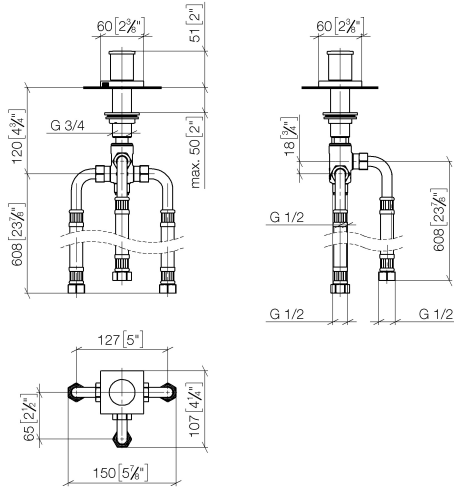


- Integrated diverter
- 1-1/4" hole diameter
- Flange 2-3/8" x 2-3/8"
- 1/2" connection
- Water flow rate limited to max. 17.1 gpm

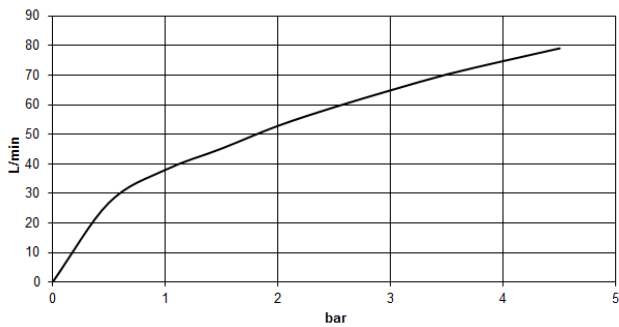
	Brushed Durabrass (23kt Gold)	29 140 670-28
	Chrome	29 140 670-00
	Brushed Platinum	29 140 670-06
	Platinum	29 140 670-08
	Dark Chrome	29 140 670-19
	Brushed Light Gold	29 140 670-27
	Matte Black	29 140 670-33
	Brushed Champagne (22kt Gold)	29 140 670-46
	Champagne (22kt Gold)	29 140 670-47
	Brushed Chrome	29 140 670-93
	Brushed Dark Platinum	29 140 670-99

## Two-way diverter for deck-mounted tub installation - Brushed Durabronz (23kt Gold) SERIES SPECIFIC

29 140 670 Product version from 6/30/2015  
mm [inches]



### Flow rate chart



### Codes & Standards

California Energy Commission (CEC)	DIN 4109	ISO 3822	Scottish Water Byelaws
UK Water Supply Regulations	Ü-Zeichen		



## Two-way diverter for deck-mounted tub installation - Brushed Durabronze (23kt Gold) SERIES SPECIFIC

---

29 140 670 Product version from 6/30/2015

Certificates and sustainability

---

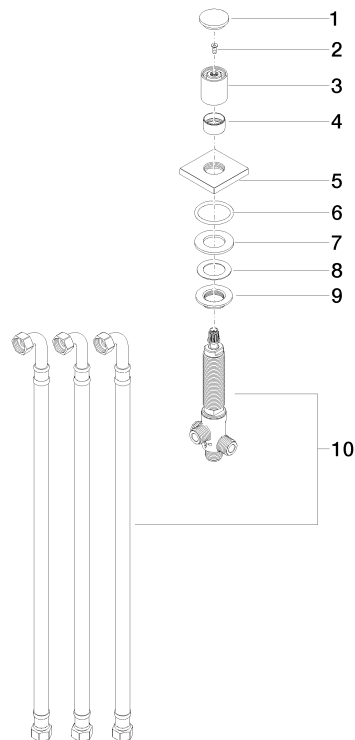
WRAS\_1911

LGA\_29

## Two-way diverter for deck-mounted tub installation - Brushed Durabronz (23kt Gold) SERIES SPECIFIC

29 140 670 Product version from 6/30/2015

Parts for other  
finishes can be found  
here: [Chrome](#)



### Spare parts list

Number	Item Number	Designation	Number of units	Lead time
1	09 20 71 003-28	handle	1.00	20
8	09 14 40 002 90	seal	1.00	2
2	90 30 30 014 00 90	screw	1.00	2
7	09 14 05 014 90	seal	1.00	2
5	09 27 67 006-28	rosette	1.00	20
3	09 20 71 002-28	handle	1.00	20
4	09 16 01 012-28	ring	1.00	20
9	09 23 10 004 90	nut	1.00	2
10	90 17 09 051 00 90	diverter	1.00	2
6	90 14 10 043 00 90	seal	1.00	2