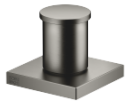




Two-way diverter for deck-mounted tub installation - Brushed Dark Platinum

SERIES SPECIFIC

29 140 670 Product version from 6/30/2015



- Integrated diverter
- 1-1/4" hole diameter
- Flange 2-3/8" x 2-3/8"
- 1/2" connection
- Water flow rate limited to max. 17.1 gpm

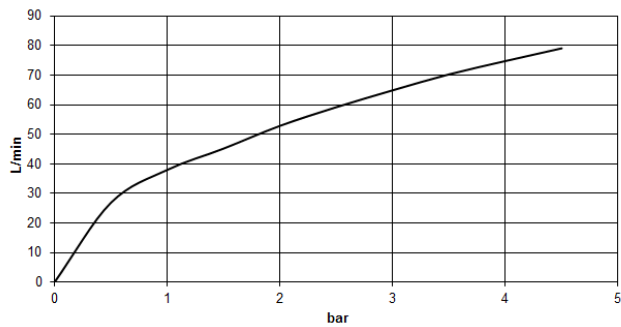
| | | |
|---|-------------------------------|---------------|
|  | Brushed Dark Platinum | 29 140 670-99 |
|  | Chrome | 29 140 670-00 |
|  | Brushed Platinum | 29 140 670-06 |
|  | Platinum | 29 140 670-08 |
|  | Dark Chrome | 29 140 670-19 |
|  | Brushed Light Gold | 29 140 670-27 |
|  | Brushed Durabrass (23kt Gold) | 29 140 670-28 |
|  | Matte Black | 29 140 670-33 |
|  | Brushed Champagne (22kt Gold) | 29 140 670-46 |
|  | Champagne (22kt Gold) | 29 140 670-47 |
|  | Brushed Chrome | 29 140 670-93 |

29 140 670 Product version from 6/30/2015

mm [inches]



Flow rate chart



Codes & Standards

| | | | |
|----------------|------------------------------------|-----------------------------|-----------|
| ASME A112.18.1 | California Energy Commission (CEC) | cUPC | DIN 4109 |
| ISO 3822 | Scottish Water Byelaws | UK Water Supply Regulations | Ü-Zeichen |



Two-way diverter for deck-mounted tub installation - Brushed Dark Platinum

SERIES SPECIFIC

29 140 670 Product version from 6/30/2015

Certificates and sustainability

WRAS_1911

LGA_29

IAPMO_4976

29 140 670 Product version from 6/30/2015

Parts for other
finishes can be found
here: [Chrome](#)



Spare parts list

| Number | Item Number | Designation | Number of units | Lead time |
|--------|--------------------|-------------|-----------------|-----------|
| 1 | 09 20 71 003-99 | handle | 1.00 | 20 |
| 5 | 09 27 67 006-99 | rosette | 1.00 | 20 |
| 3 | 09 20 71 002-99 | handle | 1.00 | 20 |
| 9 | 09 23 10 004 90 | nut | 1.00 | 2 |
| 10 | 90 17 09 051 00 90 | diverter | 1.00 | 2 |
| 4 | 09 16 01 012-99 | ring | 1.00 | 20 |
| 8 | 09 14 40 002 90 | seal | 1.00 | 2 |
| 2 | 90 30 30 014 00 90 | screw | 1.00 | 2 |
| 7 | 09 14 05 014 90 | seal | 1.00 | 2 |
| 6 | 90 14 10 043 00 90 | seal | 1.00 | 2 |