



MEM Single-lever lavatory mixer - Brushed Champagne (22kt Gold)

29 210 782    Product version from 5/5/2021



- 1-3/8" hole diameter
- Flange 2-3/8" x 2-3/8"
- 3x 3/8" flexible supply line
- 2 x pressure hose with 3/8" compression fitting

(ADA)

NOTE: Local building codes may require the use of an anti-scald device. Please refer to remote pressure balance valve (35 914 970 90)

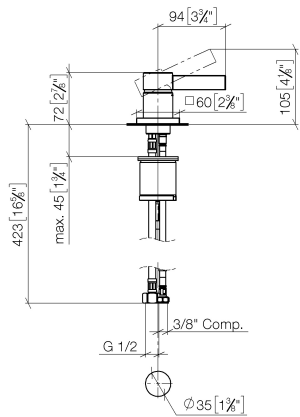
	Brushed Champagne (22kt Gold)	29 210 782-46 0010
	Chrome	29 210 782-00 0010
	Brushed Platinum	29 210 782-06 0010
	Platinum	29 210 782-08 0010
	Dark Chrome	29 210 782-19 0010
	Brushed Durabronze (23kt Gold)	29 210 782-28 0010
	Champagne (22kt Gold)	29 210 782-47 0010
	Brushed Dark Platinum	29 210 782-99 0010



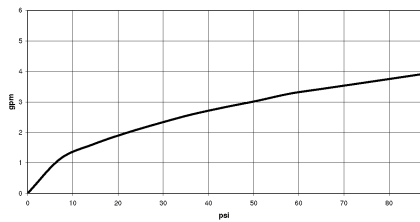
# MEM Single-lever lavatory mixer - Brushed Champagne (22kt Gold)

29 210 782    Product version from 5/5/2021

mm [inches]



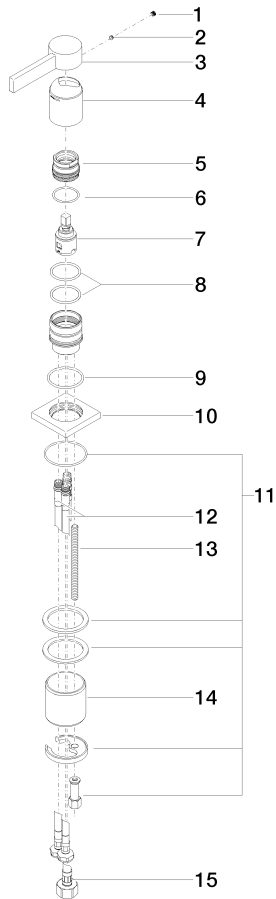
## Flow rate chart



## MEM Single-lever lavatory mixer - Brushed Champagne (22kt Gold)

29 210 782 Product version from 5/5/2021

Parts for other  
finishes can be found  
here: [Chrome](#)



### Spare parts list

Number	Item Number	Designation	Number of units	Lead time
1	90 31 20 109 00 90	plug	1	2
2	90 31 11 063 00 90	pin	1	2
3	09 20 78 057-46	handle	1	30
4	09 11 02 289-46	cover	1	30
5	09 24 04 288 90	nut	1	2
6	09 14 10 137 90	seal	1	2
7	90 15 05 042 00 90	cartridge	1	2
8	09 14 10 192 90	seal	2	2
9	09 14 10 067 90	seal	1	2
10	09 27 78 040-46	rosette	1	30
11	04 30 11 038 02 90	fixing set	1	2
12	04 30 04 106 00 90	hose	2	2
13	09 31 11 012 90	pin	1	2
14	09 18 40 079 90	sleeve	1	2
15	04 30 04 019 00 90	hose	1	2