



Single-lever tub mixer for deck-mounted tub installation - Chrome

SERIES SPECIFIC

29 300 670 Product version from 6/1/2024



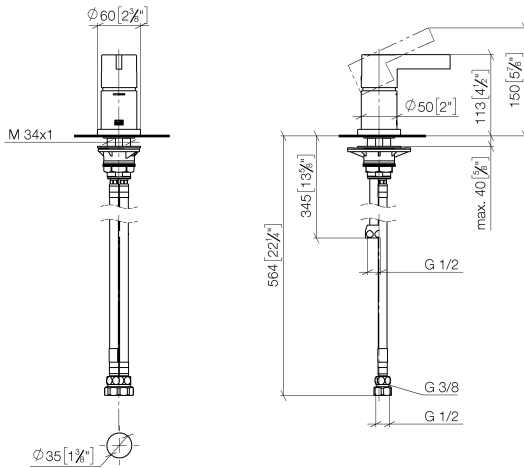
- Flange 2-3/8" x 2-3/8"
- 1-3/8" hole diameter
- Water flow rate limited to max. 9.4 gpm

NOTE: Local building codes may require the use of an anti-scald device. Please refer to remote pressure balance valve (35 914 970 90) (ADA)

	Chrome	29 300 670-00
	Brushed Platinum	29 300 670-06
	Platinum	29 300 670-08
	Dark Chrome	29 300 670-19
	Brushed Light Gold	29 300 670-27
	Brushed Durabrass (23kt Gold)	29 300 670-28
	Matte Black	29 300 670-33
	Brushed Champagne (22kt Gold)	29 300 670-46
	Champagne (22kt Gold)	29 300 670-47
	Brushed Chrome	29 300 670-93
	Brushed Dark Platinum	29 300 670-99

29 300 670 Product version from 6/1/2024

mm [inches]



Flow rate chart



Codes & Standards

ADA	ASME A112.18.1	cUPC	DIN 4109
ISO 3822	Scottish Water Byelaws	UK Water Supply Regulations	Ü-Zeichen



Single-lever tub mixer for deck-mounted tub installation - Chrome

SERIES SPECIFIC

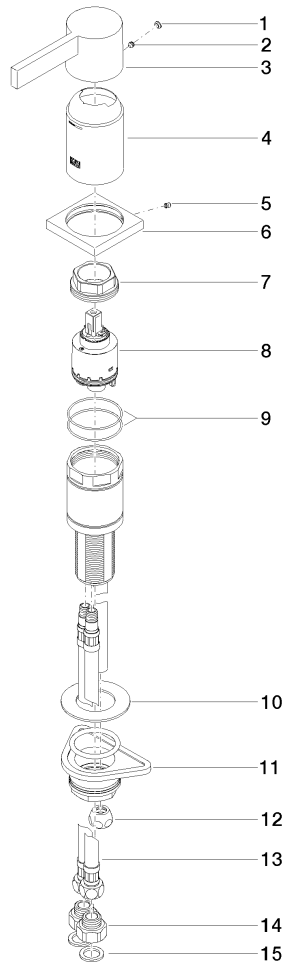
29 300 670 Product version from 6/1/2024

Certificates and sustainability

LGA_29	IAPMO_4976	WRAS_250502
--------	------------	-------------

29 300 670 Product version from 6/1/2024

Parts for other
finishes can be found
here: Brushed
Platinum



Spare parts list

Number	Item Number	Designation	Number of units	Lead time
1	90 31 20 087 00-00	plug	1.00	10
10	09 30 11 060 90	disc	1.00	2
14	09 24 03 185-00	nipple	2.00	10
6	09 27 67 016-00	rosette	1.00	10
11	04 23 10 044 02 90	fixing set	1.00	2
4	09 28 30 037-00	cover	1.00	10
5	09 31 11 044 90	pin	1.00	2
8	90 15 05 039 00 90	cartridge	1.00	2
3	09 20 67 014-00	handle	1.00	10
15	09 14 05 004 90	seal	2.00	2
13	04 30 04 021 00 90	hose	2.00	2
9	09 14 10 201 90	seal	2.00	2
12	04 23 30 041 00 90	threaded connector	1.00	2
7	09 24 04 448 90	nut	1.00	2
2	90 31 11 063 00 90	pin	1.00	2