

30 805 809 Product version from 7/1/2023



- 19-5/8" Projection
- Swiveling spout
- Laminar stream
- One water inlet, no mixing function
- Water flow rate limited to max. 1.5 gpm
- Two valves for on / off function
- Min. rough in depth 4-7/8"
- Max. rough in depth 3-1/8"
- lead-free
- This product can help a building meet the requirements of Green Building Rating Systems, e.g. LEED®, BREEAM®, DGNB

	Platinum	30 805 809-08
	Chrome	30 805 809-00
	Brushed Platinum	30 805 809-06
	Durabronze (23kt Gold)	30 805 809-09
	Dark Chrome	30 805 809-19
	Brushed Durabronze (23kt Gold)	30 805 809-28
	Brushed Bronze	30 805 809-42
	Brushed Champagne (22kt Gold)	30 805 809-46
	Champagne (22kt Gold)	30 805 809-47
	Brushed Chrome	30 805 809-93
	Brushed Dark Platinum	30 805 809-99

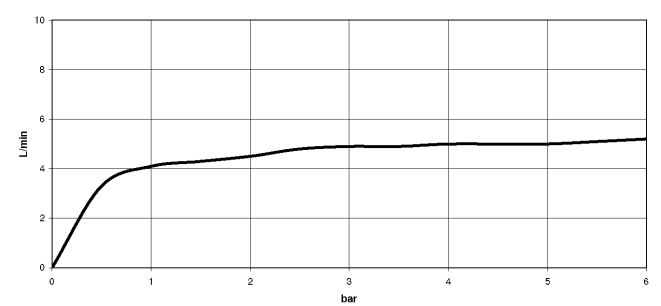
Required article



- POT FILLER Rough-in wall elbow -**

35 087 970-90
- Min. rough in depth 3-1/8"
 - Max. rough in depth 4-7/8"

Flow rate chart



Codes & Standards

ASME A112.18.1	California Energy Commission (CEC)	cUPC	DIN 4109
ISO 3822	NSF372	NSF61	Scottish Water Byelaws
UK Water Supply Regulations	Ü-Zeichen		



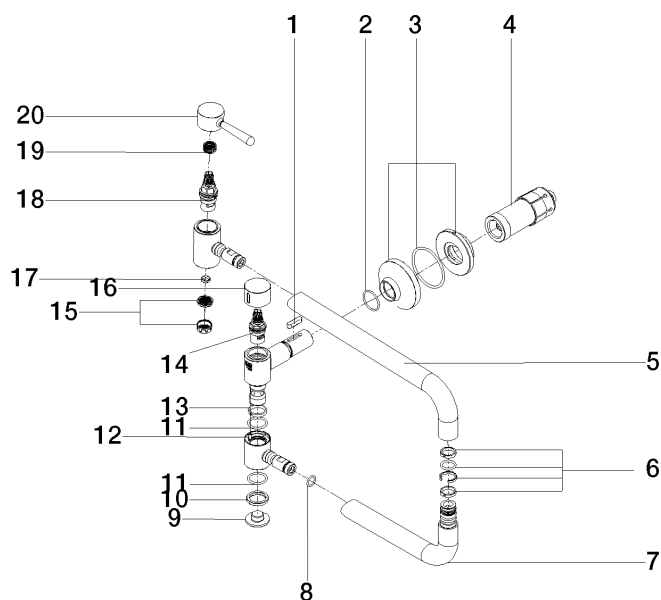
VAIA POT FILLER Cold water valve - Platinum

VAIA

30 805 809 Product version from 7/1/2023

Certificates and sustainability

LGA_29 IAPMO_N-4976 WRAS_240702 IAPMO_6397 IAPMO_4976 (



Spare parts list

Number	Item Number	Designation	Number of units	Lead time
7	04 28 22 221 10-08	pipe	1.00	40
13	09 28 10 136 90	ring	1.00	2
16	09 20 62 025-08	handle	1.00	60
19	90 12 12 232 00 90	fixing cap	1.00	2
9	09 21 02 028-08	lid	1.00	40
20	90 20 80 051 00-08	handle	1.00	40
8	90 14 10 077 00 90	seal	2.00	2
12	09 31 11 109 90	pin	1.00	2
18	90 90 03 146 00 90	top	1.00	2
11	09 14 10 015 90	seal	2.00	2
2	90 14 10 063 00 90	seal	1.00	2
1	90 16 04 001 00 90	spring	1.00	2
14	90 90 03 171 00 90	top	1.00	2
5	09 28 22 208-08	pipe	1.00	40
10	09 28 10 139 90	ring	1.00	2
3	90 27 87 039 00-08	rosette	1.00	40
17	09 14 05 002 90	seal	1.00	2
15	09 29 03 089 90	aerator	1.00	60
4	90 30 01 213 00 90	connection	1.00	2
6	90 28 10 199 00 90	gasket kit	1.00	2