

TARA ULTRA POT FILLER Cold water valve - Champagne (22kt Gold)

30 805 875 Product version from 10/1/2024



- 19-5/8" Projection
- Swiveling spout
- Laminar stream
- One water inlet, no mixing function
- Water flow rate limited to max. 1.5 gpm
- Two valves for on / off function
- Min. rough in depth 4-7/8"
- Max. rough in depth 3-1/8"
- lead-free
- This product can help a building meet the requirements of Green Building Rating Systems, e.g. LEED®, BREEAM®, DGNB

	Champagne (22kt Gold)	30 805 875-47
	Chrome	30 805 875-00
	Brushed Platinum	30 805 875-06
	Platinum	30 805 875-08
	Durabrass (23kt Gold)	30 805 875-09
	Dark Chrome	30 805 875-19
	Brushed Durabrass (23kt Gold)	30 805 875-28
	Brushed Bronze	30 805 875-42
	Brushed Champagne (22kt Gold)	30 805 875-46
	Brushed Chrome	30 805 875-93
	Brushed Dark Platinum	30 805 875-99

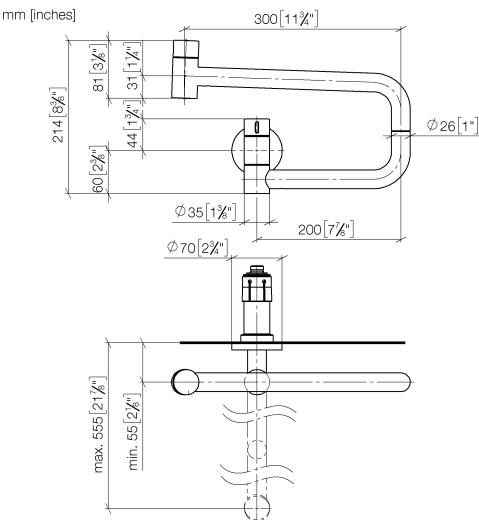
Required article



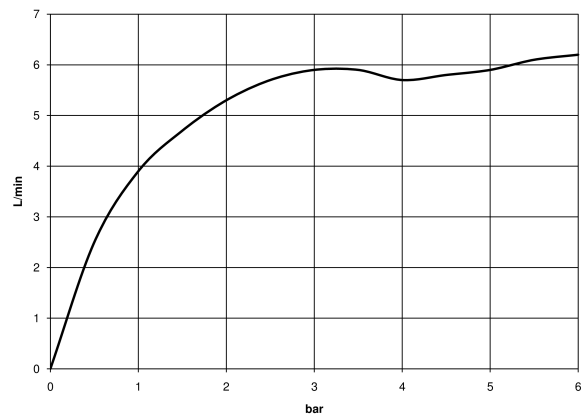
- POT FILLER Rough-in wall elbow - 35 087 970-90**
- Min. rough in depth "
 - Max. rough in depth "

TARA ULTRA POT FILLER Cold water valve - Champagne (22kt Gold)

30 805 875 Product version from 10/1/2024



Flow rate chart



Codes & Standards

ASME A112.18.1/CSA B125.1	California Energy Commission (CEC)	DIN 4109	ISO 3822
NSF/ANSI 372	NSF/ANSI/CAN 61	NSF372	NSF61
Scottish Water Byelaws	UK Water Supply Regulations	Ü-Zeichen	



TARA ULTRA POT FILLER Cold water valve - Champagne (22kt Gold)

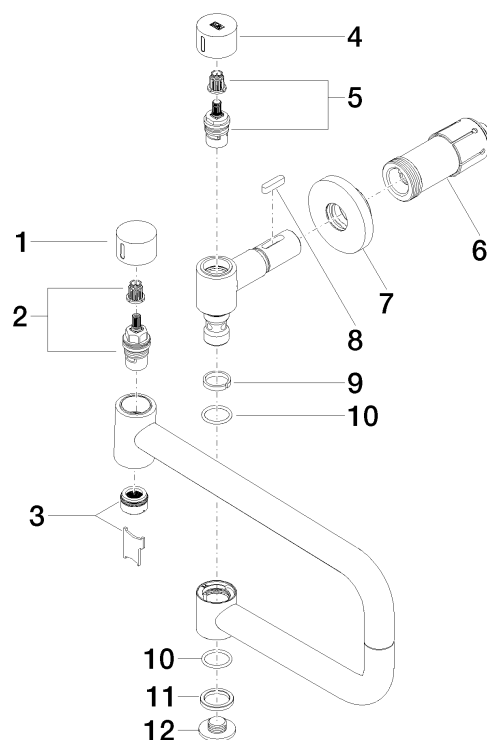
30 805 875 Product version from 10/1/2024

Certificates

LGA_29	IAPMO_N-4	IAPMO_6	WRAS_240702
--------	-----------	---------	-------------

TARA ULTRA POT FILLER Cold water valve - Champagne (22kt Gold)

30 805 875 Product version from 10/1/2024



Spare parts list

Number	Item Number	Designation	Number of units	Lead time
1	09 20 62 025-47	handle	1	30
2	90 90 03 146 00 90	top	1	2
3	90 23 01 026 11-47	aerator	1	30
4	09 20 62 027-47	handle	1	-
Spare part can no longer be ordered, please order the replacement item				
5	90 90 03 171 00 90	top	1	2
6	90 30 01 213 00 90	connection	1	2
7	90 27 87 039 00-47	rosette	1	30
8	90 16 04 001 00 90	spring	1	2
9	09 28 10 136 90	ring	1	2
10	09 14 10 015 90	seal	2	2
11	09 28 10 139 90	ring	1	2
12	09 21 02 028-47	lid	1	30