

LOT Two-hole mixer with individual flanges - Platinum

32 800 680 Product version from 6/1/2022



- 9-1/4" Projection
- Swiveling spout 360°
- Aerated stream
- Total height 13-5/8"
- Height to aerator/spout outlet 12-1/2"
- Individual flanges 2-1/8" x 2-1/8"
- Spout hole diameter 1-3/8"
- Single-lever mixer hole diameter 1-3/4"
- 2 x pressure hose with 3/8" compression fitting
- Water flow rate limited to max. 1.5 gpm
- lead-free
- This product can help a building meet the requirements of Green Building Rating Systems, e.g. LEED®, BREEAM®, DGNB

(ADA)

Flexible positioning of components.

Recommended article

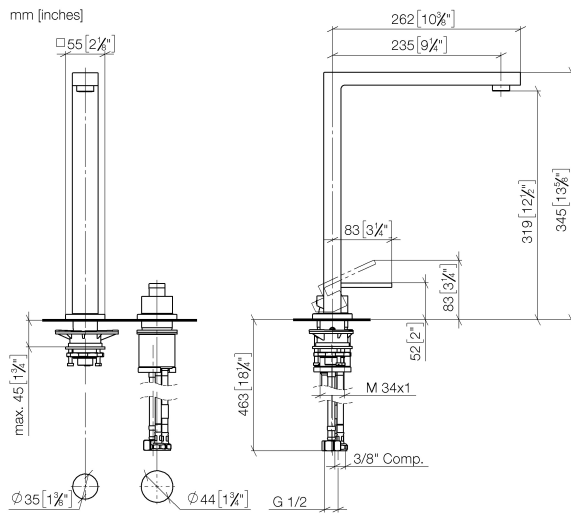
**AIR SWITCH operating button,
trim parts only - Platinum**

10 714 970-08

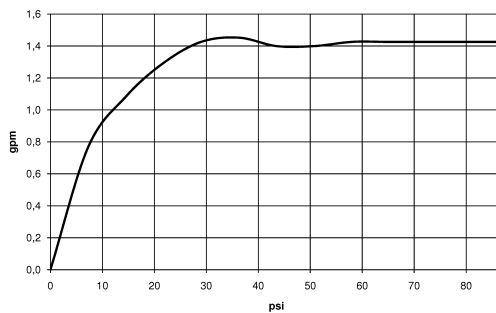


LOT Two-hole mixer with individual flanges - Platinum

32 800 680 Product version from 6/1/2022



Flow rate chart



Codes & Standards

ADA	ASME A112.18.1	ASME A112.18.1/CSA B125.1	California Energy Commission (CEC)
cUPC	NSF/ANSI 372	NSF/ANSI/CAN 61	NSF372
NSF61			



LOT Two-hole mixer with individual flanges - Platinum

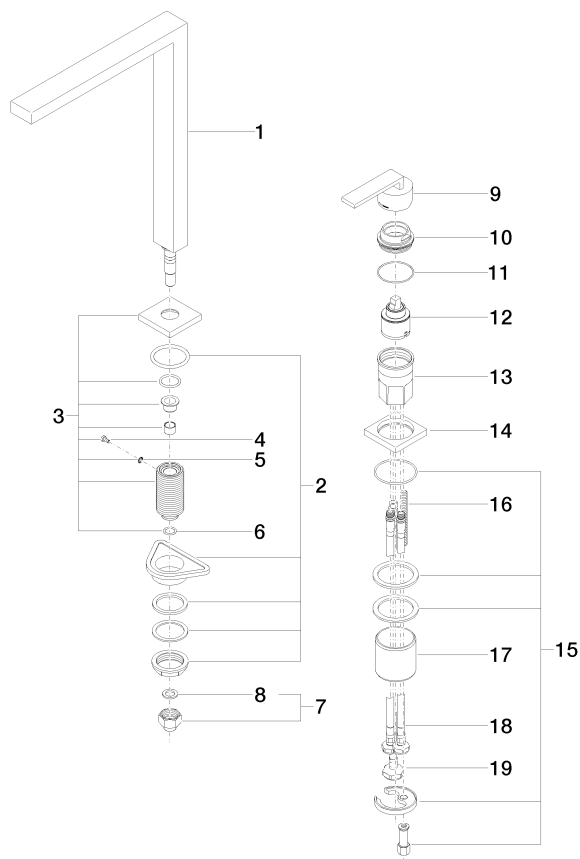
32 800 680 Product version from 6/1/2022

Certificates

IAPMO_N-4 IAPMO_6 IAPMO_4976 (

LOT Two-hole mixer with individual flanges - Platinum

32 800 680 Product version from 6/1/2022



Spare parts list

Number	Item Number	Designation	Number of units	Lead time
1	90 11 06 188 08-08	spout	1	40
2	04 23 10 044 01 90	fixing set	1	2
3	90 27 78 023 00-08	rosette	1	40
4	09 30 30 057 90	screw	1	2
5	09 30 11 028 90	disc	1	2
6	90 14 10 077 00 90	seal	1	2
7	04 24 04 166 10 90	nipple	1	2
8	90 14 20 002 00 90	seal	1	2
9	90 20 78 040 00-08	handle	1	40
10	09 24 04 142-08	nut	1	60
11	09 14 10 108 90	seal	1	2
12	90 15 05 045 00 90	cartridge	1	2
13	09 30 01 100 10 90	sleeve	1	2
14	09 27 78 007-08	rosette	1	60
15	04 30 11 038 02 90	fixing set	1	2
16	09 31 11 011 90	pin	1	2
17	09 18 40 079 90	sleeve	1	2
18	04 30 04 106 00 90	hose	2	2
19	04 30 04 019 00 90	hose	1	2