

# LOT BAR TAP Two-hole mixer with individual flanges - Platinum

32 805 680    Product version from 6/1/2022



- 6-1/2" Projection
  - Swiveling spout 360°
  - Aerated stream
  - Total height 9"
  - 8-1/8" height to aerator/spout outlet
  - Individual flanges 2-1/8" x 2-1/8"
  - Spout hole diameter 1-3/8"
  - Single-lever mixer hole diameter 1-3/4"
  - 2 x pressure hose with 3/8" compression fitting
  - Water flow rate limited to max. 1.5 gpm
  - lead-free
  - This product can help a building meet the requirements of Green Building Rating Systems, e.g. LEED®, BREEAM®, DGNB
- (ADA)
- Flexible positioning of components.

	Platinum	32 805 680-08 0010
	Chrome	32 805 680-00 0010
	Brushed Platinum	32 805 680-06 0010
	Dark Chrome	32 805 680-19 0010
	Brushed Durabronz (23kt Gold)	32 805 680-28 0010
	Brushed Champagne (22kt Gold)	32 805 680-46 0010
	Champagne (22kt Gold)	32 805 680-47 0010
	Brushed Dark Platinum	32 805 680-99 0010

## Recommended article

	<b>Soap dispenser with flange - Platinum</b>	82 439 970-08
---	--	---------------

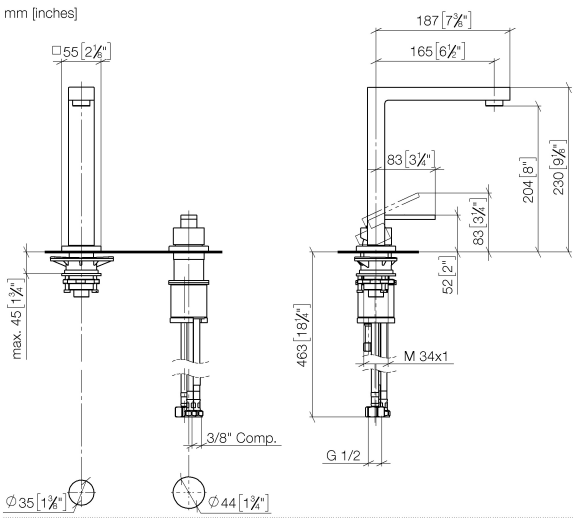
## Recommended article

	<b>AIR SWITCH operating button, trim parts only - Platinum</b>	10 714 970-08
---	--	---------------

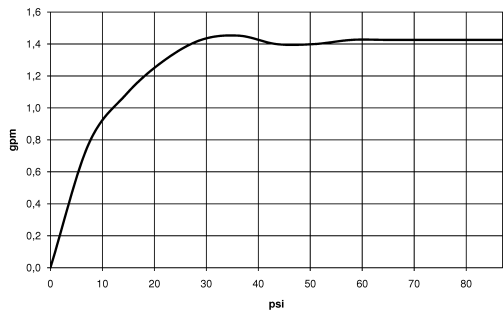


LOT BAR TAP Two-hole mixer with individual flanges - Platinum

32 805 680    Product version from 6/1/2022



Flow rate chart



Codes & Standards

ADA	ASME A112.18.1	ASME A112.18.1/CSA B125.1	California Energy Commission (CEC)
cUPC	NSF/ANSI 372	NSF/ANSI/CAN 61	NSF372
NSF61			



LOT BAR TAP Two-hole mixer with individual flanges - Platinum

---

32 805 680    Product version from 6/1/2022

Certificates

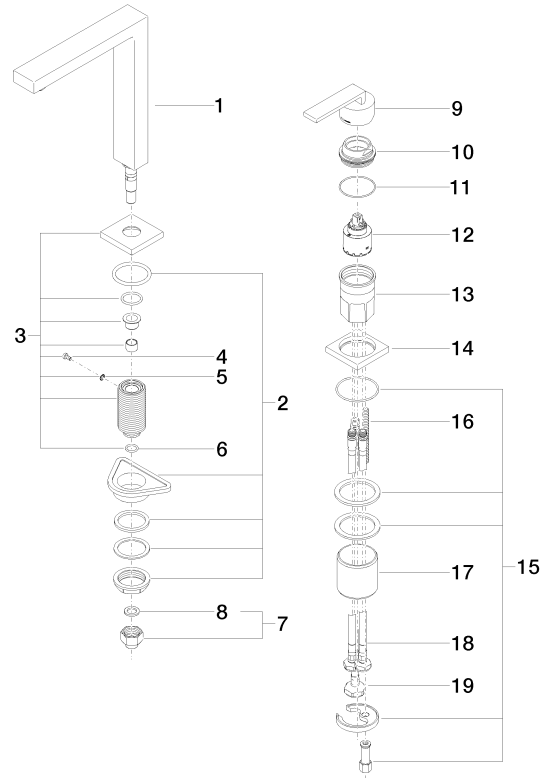
---

IAPMO\_N-4                    IAPMO\_6                    IAPMO\_4976 (

## LOT BAR TAP Two-hole mixer with individual flanges - Platinum

32 805 680 Product version from 6/1/2022

Parts for other  
finishes can be found  
here: [Chrome](#)



### Spare parts list

Number	Item Number	Designation	Number of units	Lead time
1	90 11 06 192 06-08	spout	1	40
2	04 23 10 044 01 90	fixing set	1	2
3	90 27 78 023 00-08	rosette	1	40
4	09 30 30 057 90	screw	1	2
5	09 30 11 028 90	disc	1	2
6	90 14 10 077 00 90	seal	1	2
7	04 24 04 166 10 90	nipple	1	2
8	90 14 20 002 00 90	seal	1	2
9	90 20 78 040 00-08	handle	1	40
10	09 24 04 142-08	nut	1	60
11	09 14 10 037 90	seal	1	2
12	90 15 05 045 00 90	cartridge	1	2
13	09 30 01 100 10 90	sleeve	1	2
14	09 27 78 007-08	rosette	1	60
15	04 30 11 038 02 90	fixing set	1	2
16	09 31 11 011 90	pin	1	2
17	09 18 40 079 90	sleeve	1	2
18	04 30 04 106 00 90	hose	2	2
19	04 30 04 019 00 90	hose	1	2