

LOT BAR TAP Two-hole mixer with individual flanges - Brushed Dark Platinum

32 805 680
Product version from 6/1/2022



- 6-1/2" Projection
 - Swiveling spout 360°
 - Aerated stream
 - Total height 9"
 - 8-1/8" height to aerator/spout outlet
 - Individual flanges 2-1/8" x 2-1/8"
 - Spout hole diameter 1-3/8"
 - Single-lever mixer hole diameter 1-3/4"
 - 2 x pressure hose with 3/8" compression fitting
 - Water flow rate limited to max. 1.5 gpm
 - lead-free
 - This product can help a building meet the requirements of Green Building Rating Systems, e.g. LEED®, BREEAM®, DGNB

(ADA)

Flexible positioning of components.

	Brushed Dark Platinum	32 805 680-99 0010
	Chrome	32 805 680-00 0010
	Brushed Platinum	32 805 680-06 0010
	Platinum	32 805 680-08 0010
	Dark Chrome	32 805 680-19 0010
	Brushed Durabronze (23kt Gold)	32 805 680-28 0010
	Brushed Champagne (22kt Gold)	32 805 680-46 0010
	Champagne (22kt Gold)	32 805 680-47 0010

Recommended article



**Soap dispenser with flange -
Brushed Dark Platinum**

82 439 970-99

Recommended article



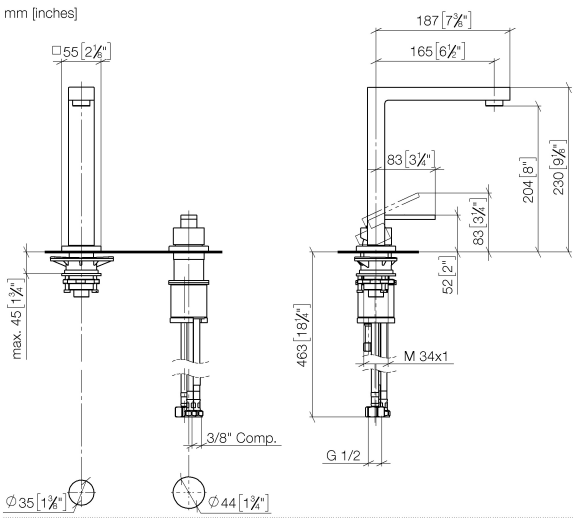
**AIR SWITCH operating button,
trim parts only - Brushed Dark
Platinum**

10 714 970-99

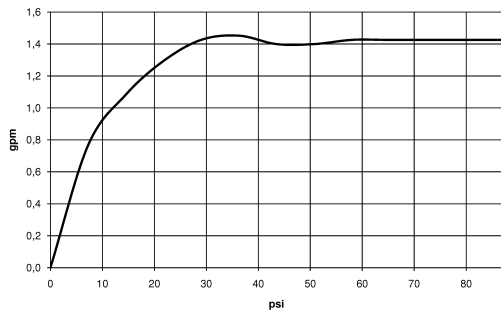


LOT BAR TAP Two-hole mixer with individual flanges - Brushed Dark Platinum

32 805 680 Product version from 6/1/2022



Flow rate chart



Codes & Standards

ADA	ASME A112.18.1	ASME A112.18.1/CSA B125.1	California Energy Commission (CEC)
cUPC	NSF/ANSI 372	NSF/ANSI/CAN 61	NSF372
NSF61			



LOT BAR TAP Two-hole mixer with individual flanges - Brushed Dark Platinum

32 805 680 Product version from 6/1/2022

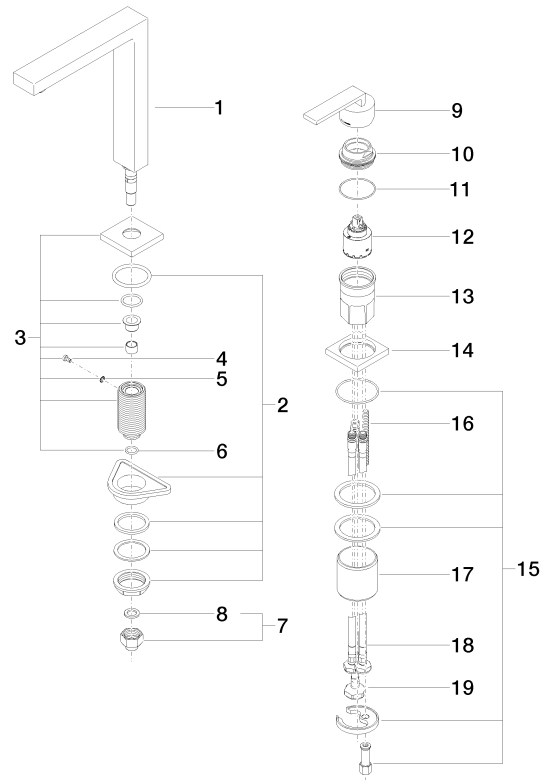
Certificates

IAPMO_N-4 IAPMO_6 IAPMO_4976 (

LOT BAR TAP Two-hole mixer with individual flanges - Brushed Dark Platinum

32 805 680 Product version from 6/1/2022

Parts for other
finishes can be found
here: [Chrome](#)



Spare parts list

Number	Item Number	Designation	Number of units	Lead time
1	90 11 06 192 06-99	spout	1	20
2	04 23 10 044 01 90	fixing set	1	2
3	90 27 78 023 00-99	rosette	1	20
4	09 30 30 057 90	screw	1	2
5	09 30 11 028 90	disc	1	2
6	90 14 10 077 00 90	seal	1	2
7	04 24 04 166 10 90	nipple	1	2
8	90 14 20 002 00 90	seal	1	2
9	90 20 78 040 00-99	handle	1	20
10	09 24 04 142-99	nut	1	20
11	09 14 10 037 90	seal	1	2
12	90 15 05 045 00 90	cartridge	1	2
13	09 30 01 100 10 90	sleeve	1	2
14	09 27 78 007-99	rosette	1	20
15	04 30 11 038 02 90	fixing set	1	2
16	09 31 11 011 90	pin	1	2
17	09 18 40 079 90	sleeve	1	2
18	04 30 04 106 00 90	hose	2	2
19	04 30 04 019 00 90	hose	1	2