

LOT Two-hole mixer with individual flanges - Brushed Platinum

LOT

32 815 680    Product version from 4/1/2024



- 9-1/4" Projection
  - Swiveling spout 360°
  - Aerated stream
  - Total height 13-5/8"
  - Height to aerator/spout outlet 12-1/2"
  - Individual flanges 2-1/8" x 2-1/8"
  - Spout hole diameter 1-3/8"
  - Single-lever mixer hole diameter 1-3/4"
  - 2 x pressure hose with 3/8" compression fitting
  - Water flow rate limited to max. 1.5 gpm
  - lead-free
  - This product can help a building meet the requirements of Green Building Rating Systems, e.g. LEED®, BREEAM®, DGNB
- (ADA)
- Flexible positioning of components.

	Brushed Platinum	32 815 680-06 0010
	Chrome	32 815 680-00 0010
	Platinum	32 815 680-08 0010
	Dark Chrome	32 815 680-19 0010
	Brushed Durabronze (23kt Gold)	32 815 680-28 0010
	Brushed Champagne (22kt Gold)	32 815 680-46 0010
	Champagne (22kt Gold)	32 815 680-47 0010
	Brushed Dark Platinum	32 815 680-99 0010

Recommended article

**AIR SWITCH operating button, trim parts only - Brushed Platinum**    10 714 970-06



Recommended article

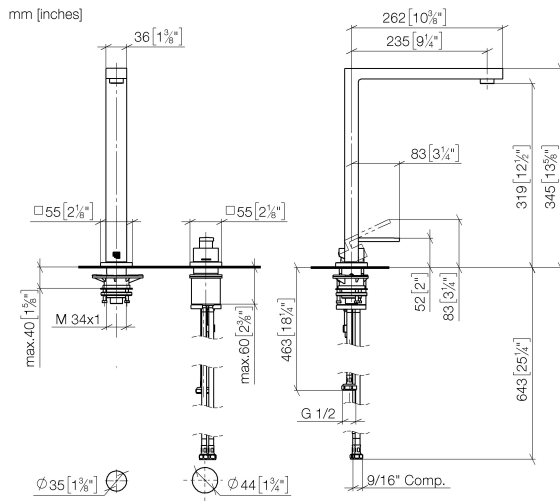
**Soap dispenser with flange - Brushed Platinum**    82 439 970-06



## LOT Two-hole mixer with individual flanges - Brushed Platinum

LOT

32 815 680 Product version from 4/1/2024



### Codes & Standards

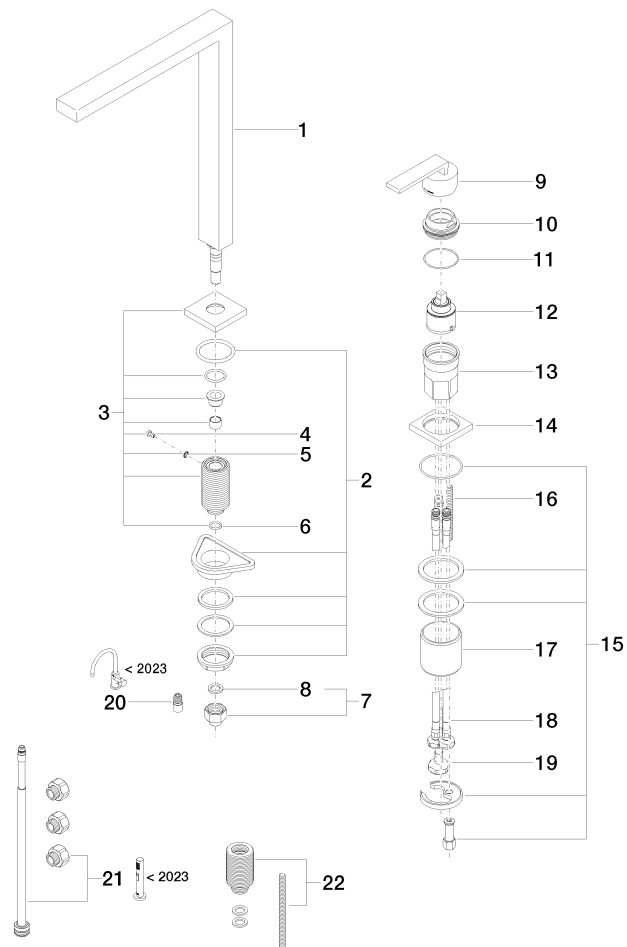
ADA

# LOT Two-hole mixer with individual flanges - Brushed Platinum

LOT

32 815 680 Product version from 4/1/2024

Parts for other  
finishes can be found  
here: [Chrome](#)





## LOT Two-hole mixer with individual flanges - Brushed Platinum

LOT

32 815 680 Product version from 4/1/2024

### Spare parts list

Number	Item Number	Designation	Number of units	Lead time
4	09 30 30 057 90	screw	1.00	2
5	09 30 11 028 90	disc	1.00	2
22	12 802 970 90	Extension set -	1.00	60
10	09 24 04 142-06	nut	1.00	10
8	90 14 20 002 00 90	seal	1.00	2
18	04 30 04 107 00 90	hose	1.00	2
7	04 24 04 166 10 90	nipple	1.00	2
17	09 18 40 079 90	sleeve	1.00	2
1	90 11 06 188 08-06	spout	1.00	10
20	90 24 03 537 01 90	adaptor	1.00	2
2	04 23 10 044 01 90	fixing set	1.00	2
21	90 17 09 046 13 90	conversion kit	1.00	2
12	90 15 05 045 00 90	cartridge	1.00	2
11	09 14 10 108 90	seal	1.00	2
13	09 30 01 100 10 90	sleeve	1.00	2
14	09 27 78 007-06	rosette	1.00	10
15	04 30 11 038 02 90	fixing set	1.00	2
6	90 14 10 077 00 90	seal	1.00	2
19	04 30 04 019 00 90	hose	1.00	2
9	90 20 78 040 00-06	handle	1.00	10
16	09 31 11 011 90	pin	1.00	2
3	90 27 78 023 00-06	rosette	1.00	10