

LOT Two-hole mixer with individual flanges - Dark Chrome

LOT

32 815 680 Product version from 4/1/2024



- 9-1/4" Projection
 - Swiveling spout 360°
 - Aerated stream
 - Total height 13-5/8"
 - Height to aerator/spout outlet 12-1/2"
 - Individual flanges 2-1/8" x 2-1/8"
 - Spout hole diameter 1-3/8"
 - Single-lever mixer hole diameter 1-3/4"
 - 2 x pressure hose with 3/8" compression fitting
 - Water flow rate limited to max. 1.5 gpm
 - lead-free
 - This product can help a building meet the requirements of Green Building Rating Systems, e.g. LEED®, BREEAM®, DGNB
- (ADA)
- Flexible positioning of components.

| | | |
|---|--------------------------------|--------------------|
|  | Dark Chrome | 32 815 680-19 0010 |
|  | Chrome | 32 815 680-00 0010 |
|  | Brushed Platinum | 32 815 680-06 0010 |
|  | Platinum | 32 815 680-08 0010 |
|  | Brushed Durabronze (23kt Gold) | 32 815 680-28 0010 |
|  | Brushed Champagne (22kt Gold) | 32 815 680-46 0010 |
|  | Champagne (22kt Gold) | 32 815 680-47 0010 |
|  | Brushed Dark Platinum | 32 815 680-99 0010 |

Recommended article

AIR SWITCH operating button, trim parts only - Dark Chrome 10 714 970-19



Recommended article

Soap dispenser with flange - Dark Chrome 82 439 970-19

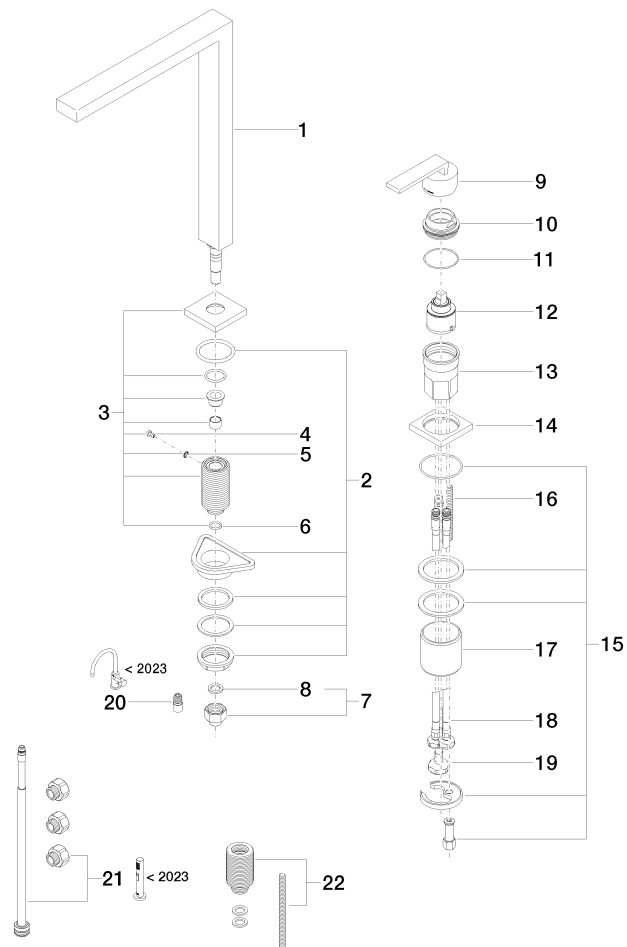


LOT Two-hole mixer with individual flanges - Dark Chrome

LOT

32 815 680 Product version from 4/1/2024

Parts for other
finishes can be found
here: [Chrome](#)





LOT Two-hole mixer with individual flanges - Dark Chrome

LOT

32 815 680 Product version from 4/1/2024

Spare parts list

| Number | Item Number | Designation | Number of units | Lead time |
|--------|--------------------|-----------------|-----------------|-----------|
| 11 | 09 14 10 108 90 | seal | 1.00 | 2 |
| 14 | 09 27 78 007-19 | rosette | 1.00 | 60 |
| 19 | 04 30 04 019 00 90 | hose | 1.00 | 2 |
| 1 | 90 11 06 188 08-19 | spout | 1.00 | 20 |
| 13 | 09 30 01 100 10 90 | sleeve | 1.00 | 2 |
| 20 | 90 24 03 537 01 90 | adaptor | 1.00 | 2 |
| 3 | 90 27 78 023 00-19 | rosette | 1.00 | 20 |
| 16 | 09 31 11 011 90 | pin | 1.00 | 2 |
| 17 | 09 18 40 079 90 | sleeve | 1.00 | 2 |
| 12 | 90 15 05 045 00 90 | cartridge | 1.00 | 2 |
| 5 | 09 30 11 028 90 | disc | 1.00 | 2 |
| 10 | 09 24 04 142-19 | nut | 1.00 | 60 |
| 18 | 04 30 04 107 00 90 | hose | 1.00 | 2 |
| 22 | 12 802 970 90 | Extension set - | 1.00 | 60 |
| 8 | 90 14 20 002 00 90 | seal | 1.00 | 2 |
| 7 | 04 24 04 166 10 90 | nipple | 1.00 | 2 |
| 15 | 04 30 11 038 02 90 | fixing set | 1.00 | 2 |
| 4 | 09 30 30 057 90 | screw | 1.00 | 2 |
| 21 | 90 17 09 046 13 90 | conversion kit | 1.00 | 2 |
| 9 | 90 20 78 040 00-19 | handle | 1.00 | 20 |
| 2 | 04 23 10 044 01 90 | fixing set | 1.00 | 2 |
| 6 | 90 14 10 077 00 90 | seal | 1.00 | 2 |