





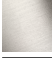




LOT Two-hole mixer with individual flanges - Brushed Champagne (22kt Gold)

LOT

32 815 680 Product version from 4/1/2024



- 9-1/4" Projection
 - Swiveling spout 360°
 - Aerated stream
 - Total height 13-5/8"
 - Height to aerator/spout outlet 12-1/2"
 - Individual flanges 2-1/8" x 2-1/8"
 - Spout hole diameter 1-3/8"
 - Single-lever mixer hole diameter 1-3/4"
 - 2 x pressure hose with 3/8" compression fitting
 - Water flow rate limited to max. 1.5 gpm
 - lead-free
 - This product can help a building meet the requirements of Green Building Rating Systems, e.g. LEED®, BREEAM®, DGNB
- (ADA)
- Flexible positioning of components.

	Brushed Champagne (22kt Gold)	32 815 680-46 0010
	Chrome	32 815 680-00 0010
	Brushed Platinum	32 815 680-06 0010
	Platinum	32 815 680-08 0010
	Dark Chrome	32 815 680-19 0010
	Brushed Durabronze (23kt Gold)	32 815 680-28 0010
	Champagne (22kt Gold)	32 815 680-47 0010
	Brushed Dark Platinum	32 815 680-99 0010

Recommended article



AIR SWITCH operating button, trim parts only - Brushed Champagne (22kt Gold) 10 714 970-46

Recommended article

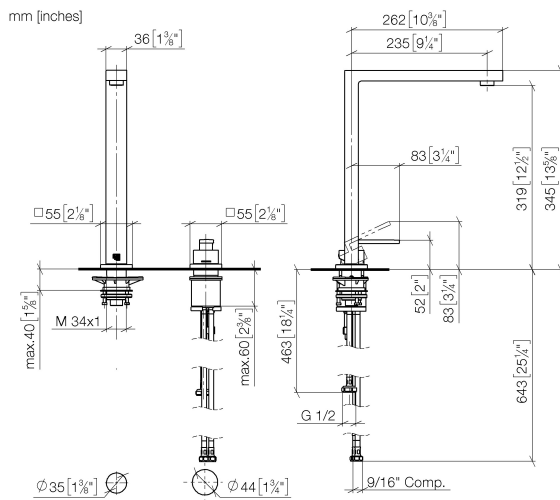


Soap dispenser with flange - Brushed Champagne (22kt Gold) 82 439 970-46

LOT Two-hole mixer with individual flanges - Brushed Champagne (22kt Gold)

LOT

32 815 680 Product version from 4/1/2024

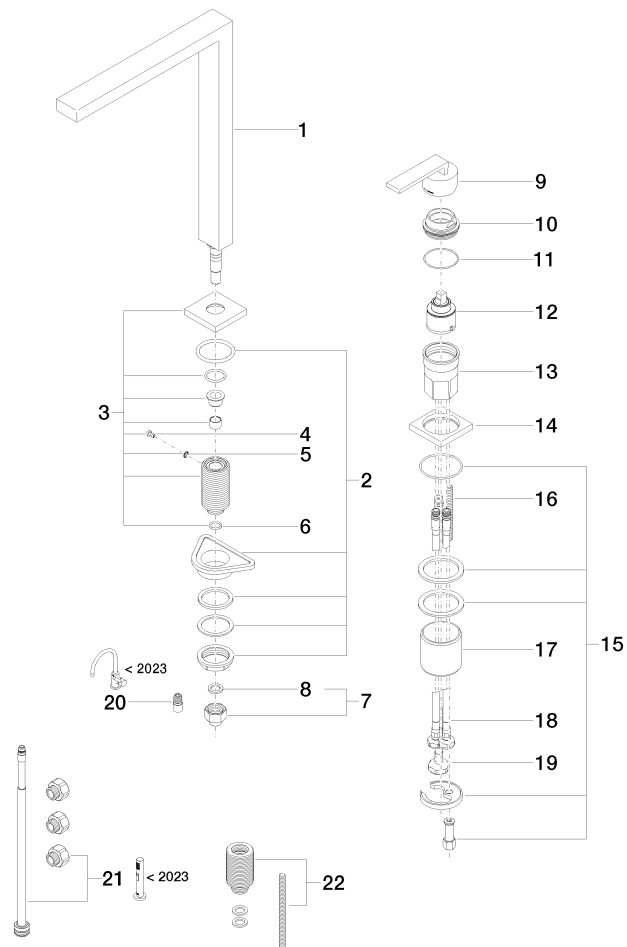


Codes & Standards

ADA

32 815 680 Product version from 4/1/2024

Parts for other
finishes can be found
here: [Chrome](#)





LOT Two-hole mixer with individual flanges - Brushed Champagne (22kt Gold)

LOT

32 815 680 Product version from 4/1/2024

Spare parts list

Number	Item Number	Designation	Number of units	Lead time
20	90 24 03 537 01 90	adaptor	1.00	2
10	09 24 04 142-46	nut	1.00	30
5	09 30 11 028 90	disc	1.00	2
8	90 14 20 002 00 90	seal	1.00	2
1	90 11 06 188 08-46	spout	1.00	30
14	09 27 78 007-46	rosette	1.00	30
7	04 24 04 166 10 90	nipple	1.00	2
3	90 27 78 023 00-46	rosette	1.00	30
6	90 14 10 077 00 90	seal	1.00	2
12	90 15 05 045 00 90	cartridge	1.00	2
9	90 20 78 040 00-46	handle	1.00	30
18	04 30 04 107 00 90	hose	1.00	2
22	12 802 970 90	Extension set -	1.00	60
21	90 17 09 046 13 90	conversion kit	1.00	2
13	09 30 01 100 10 90	sleeve	1.00	2
11	09 14 10 108 90	seal	1.00	2
15	04 30 11 038 02 90	fixing set	1.00	2
4	09 30 30 057 90	screw	1.00	2
17	09 18 40 079 90	sleeve	1.00	2
16	09 31 11 011 90	pin	1.00	2
2	04 23 10 044 01 90	fixing set	1.00	2
19	04 30 04 019 00 90	hose	1.00	2